

Product End-of-Life Disassembly Instructions
Product Category: **Networking**
Marketing Name / Model
[List multiple models if applicable.]

HPE ANW AP-634 Campus AP

Purpose: The document is intended for use by end-of-life recyclers or treatment facilities. It provides the basic instructions for the disassembly of HPE products to remove components and materials requiring selective treatment, as defined by EU directive 2002/96/EC, Waste Electrical and Electronic Equipment (WEEE).

1.0 Items Requiring Selective Treatment

1.1 Items listed below are classified as requiring selective treatment.

1.2 Enter the quantity of items contained within the product which require selective treatment in the right column, as applicable.

Item Description	Notes	Quantity of items included in product
Printed Circuit Boards (PCB) or Printed Circuit Assemblies (PCA)	With a surface greater than 10 sq cm	1
Batteries	All types including standard alkaline and lithium coin or button style batteries	0
Mercury-containing components	For example, mercury in lamps, display backlights, scanner lamps, switches, batteries	0
Liquid Crystal Displays (LCD) with a surface greater than 100 sq cm	Includes background illuminated displays with gas discharge lamps	0
Cathode Ray Tubes (CRT)		0
Capacitors / condensers (Containing PCB/PCT)		0
Electrolytic Capacitors / Condensers measuring greater than 2.5 cm in diameter or height		0
External electrical cables and cords		0
Gas Discharge Lamps		0
Plastics containing Brominated Flame Retardants weighing > 25 grams (not including PCBs or PCAs already listed as a separate item above)		0
Components and parts containing toner and ink, including liquids, semi-liquids (gel/paste) and toner	Include the cartridges, print heads, tubes, vent chambers, and service stations.	0
Components and waste containing asbestos		0
Components, parts and materials containing refractory ceramic fibers		0

Item Description	Notes	Quantity of items included in product
Components, parts and materials containing radioactive substances		0

2.0 Tools Required

List the type and size of the tools that would typically be used to disassemble the product to a point where components and materials requiring selective treatment can be removed.

Tool Description	Tool Size (if applicable)
Torx screwdriver	T10
Static electric tweezers	NA
Phillips screwdriver	PH2
Phillips screwdriver	PH1

3.0 Product Disassembly Process

3.1 List the basic steps that should typically be followed to remove components and materials requiring selective treatment:

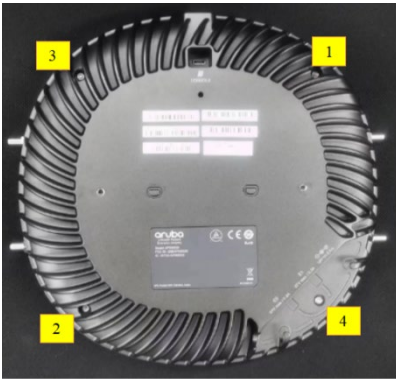
1. Use Phillips screwdriver to remove the two screws on the MNT bracket. (Type PH2)
2. Use Torx screwdriver to remove the four screws on the chassis. (Type T10)
3. Stagger the upper cover with the lower cover, remove the ipex head from the PCBA ipex connector, remove the antenna from the wire buckle, and remove the upper cover
4. Use Phillips screwdriver to remove the four screws on the antenna board. (Type PH1), remove the ipex head from the PCBA ipex connector, and remove the antenna board.
5. Use Phillips screwdriver to remove the three screws on the PCB board. (Type PH1)
6. Use the plastic dis-assembly tool to insert into the plate removal slot shown in the figure, go up against the PCBA, remove the PCBA from the lower cover, and the dis-assembly is complete

3.2 Optional Graphic. If the disassembly process is complex, insert a graphic illustration below to identify the items contained in the product that require selective treatment (with descriptions and arrows identifying locations).

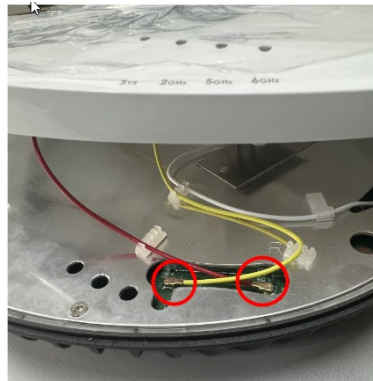
1. Use Phillips screwdriver to remove the two screws on the MNT bracket. (Type PH2)



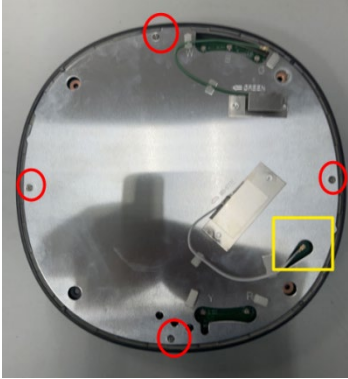
2. Use Torx screwdriver to remove the four screws on the chassis. (Type T10)



3. Stagger the upper cover with the lower cover, remove the ipex head from the PCBA ipex connector, remove the antenna from the wire buckle, and remove the upper cover



4. Use Phillips screwdriver to remove the four screws on the antenna board. (Type PH1), remove the ipex head from the PCBA ipex connector, and remove the antenna board.



5. Use Phillips screwdriver to remove the three screws on the PCB board. (Type PH1)

6. Use the plastic dis-assembly tool to insert into the plate removal slot shown in the figure, go up against the PCBA, remove the PCBA from the lower cover, and the dis-assembly is complete

