

# HP OneView (v 7.5) for Microsoft System Center Release Notes

HP Part Number: 678362-403  
Published: December 2014  
Edition: 1



© Copyright 2014 Hewlett-Packard Development Company, L.P.

Confidential computer software. Valid license from HP required for possession, use or copying. Consistent with FAR 12.211 and 12.212, Commercial Computer Software, Computer Software Documentation, and Technical Data for Commercial Items are licensed to the U.S. Government under vendor's standard commercial license.

The information contained herein is subject to change without notice. The only warranties for HP products and services are set forth in the express warranty statements accompanying such products and services. Nothing herein should be construed as constituting an additional warranty. HP shall not be liable for technical or editorial errors or omissions contained herein.

**Acknowledgements**

Microsoft® and Windows® are U.S. registered trademarks of Microsoft Corporation.

## Description

HP OneView for Microsoft System Center v 7.5 is a fully integrated product that unifies the management of physical and virtual IT environments, including servers, PCs, storage, networking devices, and software. It combines an integrated set of HP extensions with Microsoft System Center Operations Manager 2012/2012 R2, Microsoft System Center Configuration Manager 2012/2012 SP1/2012 R2 and Microsoft System Center Virtual Machine Manager 2008/2012/2012 R2 to bring native manageability of HP hardware to Microsoft System Center environments.

To learn more about this product, see the HP OneView for Microsoft System Center website:

<http://www.hp.com/go/ovsc>

## Update recommendation

Recommended—Includes new enhancements and features. HP recommends that all customers install this update.

## Supersedes

HP OneView for Microsoft System Center v 7.4.1.

## Operating systems and devices

Complete information on supported hardware and software is included in the respective feature user guides.

These documents are available on the HP OneView for Microsoft System Center documentation website:

<http://www.hp.com/go/ovsc/docs>

## What's new

- **Support for HP OneView 1.20**
- **Full support for ProLiant Gen9 servers across all features**
- **New features for HP SCVMM 2012 Console Integration Kit**
  - ProLiant Gen9 server support with HP OneView server profile based deployment in SCVMM
  - Cluster consistency view in SCVMM to identify mismatched cluster node configurations
  - Ability to easily expand an existing cluster using HP OneView server profiles and SCVMM
  - Fibre channel connection information available in HP Fabric Management Add-in for SCVMM
- **Selective enforcement of HP OneView Advanced licensing for features dependent on HP OneView**
- **New feature for HP OneView SCOM Integration Kit**
  - HP OneView uplink sets and logical interconnect monitoring using HP OneView Management Pack.

## Prerequisites

Complete information on supported hardware and software is included in the respective feature user guides.

These documents are available on the HP OneView for Microsoft System Center documentation website:

<http://www.hp.com/go/ovsc/docs>

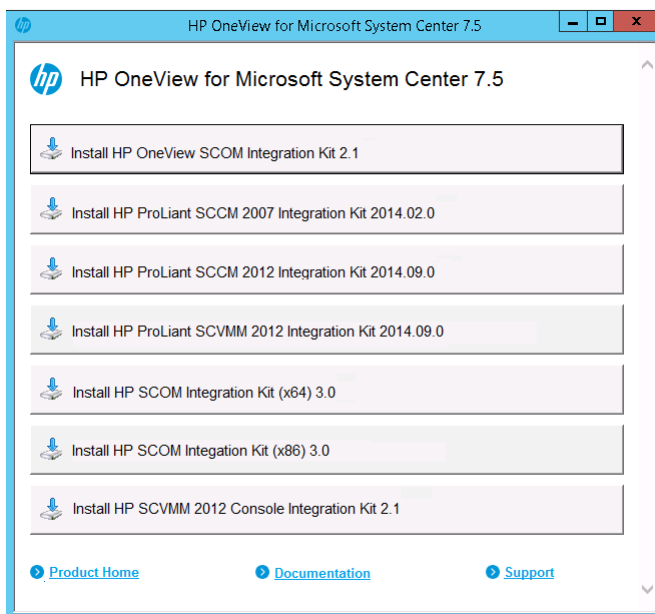
## Installation instructions

HP OneView for Microsoft System Center is a fully integrated product that unifies the management of physical and virtual IT environments, including servers, PCs, storage, networking devices and software. It combines an integrated set of HP extensions with Microsoft System Center Operations Manager (SCOM), Microsoft System Center Configuration Manager (SCCM), and Microsoft System Center Virtual Machine Manager (SCVMM) to bring native manageability of HP hardware to Microsoft System Center environments.

There are separate user guides for each of the features in HP OneView for Microsoft System Center. For a complete set of documentation for the current release of this product, see the HP Enterprise Information Library at <http://www.hp.com/go/ovsc/docs>.

## HP installers

This image shows clickable product labels that link to the installers that deploy and configure HP extensions to Microsoft System Center. To install and configure each product, see the HP OneView for Microsoft System Center documentation at <http://www.hp.com/go/ovsc/docs>.



## HP OneView SCOM Integration Kit

HP OneView Management Packs integrate alert processing, state monitoring, and hardware resource lifecycle management with information specifically designed for HP Virtual Connect and HP BladeSystem enclosures that are managed by HP OneView. The HP OneView Management Packs require that the HP OneView Event Manager be installed on each SCOM management server in the resource pool for alert processing.

## HP ProLiant SCCM 2012 Integration Kit

The HP ProLiant SCCM 2012 Integration Kit provides drivers and driver packages for deploying ProLiant servers. This kit includes HP Inventory Tool for collecting extended inventory data about ProLiant windows servers.

## HP ProLiant SCVMM 2012 Integration Kit

The HP ProLiant SCVMM 2012 Integration Kit assists with SCVMM 2012 bare metal OS deployment. It puts HP drivers needed for deploying ProLiant servers into the SCVMM library share so they can be used by the SCVMM deployment process. The same set of drivers can also be used for injection into WinPE images.

## HP SCOM Integration Kit

This kit installs HP Management Packs, tools, HP Device Monitor Service or HP Device Monitor Console. These Management Packs integrate alert processing, state monitoring, and hardware resource lifecycle management with information specifically designed for HP ProLiant Windows, Agentless, Linux/VMware ESX, HP Virtual Connect and HP BladeSystem enclosures. These management packs do not manage devices that are managed by HP OneView. Instead, use the HP OneView SCOM Integration Kit.

## HP SCVMM 2012 Console Integration Kit

This kit includes the HP Fabric Management Add-in for SCVMM that provides a consolidated view of virtualized fabric environments that use HP OneView or HP Virtual Connect Manager. When used with HP OneView, it provides enhanced server provisioning and ability to expand clusters using HP OneView server profiles.

## HP ProLiant Updates Catalog

The HP catalog delivers an integrated software and firmware update experience for HP ProLiant customers using Microsoft SCCM 2012 or SCVMM 2012 to manage their server infrastructure. The HP ProLiant Updates Catalog is not installed from this image. This catalog is registered in the standard Microsoft third party Partner Catalog List as "HP ProLiant Updates Catalog" and can be selected in System Center Updates Publisher (SCUP).

## HP ProLiant SCCM 2012 Integration Kit Manual Installation

HP ProLiant SCCM 2012 Integration Kit v2014.02.0 or later fails to install on SCCM 2012 R2 that have been upgraded to Cumulative Update 2 or later. On such systems, *hpproliantsccmkit-install.ps1* PowerShell installer script is throwing an exception when installing the drivers. This is due to the changes in Microsoft PowerShell cmdlets behavior after applying SCCM 2012 R2 Cumulative Update 2 or later. To work around this issue, refer to the following manual procedure to install HP ProLiant SCCM 2012 Integration Kit.

- 
- ① **IMPORTANT:** Please read this entire document first before proceeding with the actual steps. These instructions are not intended for upgrading.
- 

**NOTE:** <SCCM Root> represents the root directory of the SCCM installation, e.g. C:\Program Files\Microsoft Configuration Manager. <SCCM Console Root> represents the root directory of the SCCM console installation, e.g. C:\Program Files (x86)\Microsoft Configuration Manager.

---

1. Ensure the following:
  - You have local administrator privileges
  - SCCM 2012 R2 or later is installed
  - This is the SCCM primary site server with console
2. Open the SCCM console.
3. Delete the following HP objects:
  - Application Management > Packages > HP ProLiant Inventory Tool
  - Operating Systems > Driver Packages > HP ProLiant Windows 2008 R2 x64 Driver Package
  - Operating Systems > Driver Packages > HP ProLiant Windows 2012 x64 Driver Package
  - Operating Systems > Driver Packages > HP ProLiant Windows 2012 R2 x64 Driver Package
  - Operating Systems > Drivers. Delete all drivers that have a category starting with "HP ProLiant...", e.g. "HP ProLiant Networking" or "HP ProLiant Storage".
4. Close the console.

5. Delete the following HP folders:
  - <SCCM Root>\OSD\Lib\DriverPackages\HP\ProLiant
  - <SCCM Root>\OSD\Lib\Drivers\HP\ProLiant
  - <SCCM Root>\OSD\Lib\Packages\HP\ProLiant
  - <SCCM Root>\OSD\Lib
6. Delete the following HP files:
  - <SCCM Root>  
hpproliantsccm2012kit-uninstall.exe
7. Delete the following HP registry keys:
  - HKLM\SOFTWARE\Microsoft\SMS\HP\ProLiant
8. Delete the following HP hardware inventory classes from the SCCM Console:
  - HW Inventory agent setting > Hardware inventory classes > Set Classes... delete the following classes/class settings:
    - HP ProLiant Location (HP\_ProLiantLocation)
    - HP ProLiant System Summary (HP\_ProLiantSystemSummary)
    - HP ProLiant Version Control (HP\_ProLiantVersionControl)
9. Extract the hpsccm2012kit-2014.##.#.##.exe installer kit.
10. Create a folder named "<SCCM Root>\OSD\Lib\" and copy the **drivers** folder from the extracted installer source into "<SCCM Root>\>\OSD\Lib\".
11. Create a folder named "<SCCM Root>\OSD\Lib\Packages\HP\ProLiant\" and copy the **inventorytool** folder from the extracted installer source into "<SCCM Root>\OSD\Lib\Packages\HP\ProLiant\".
12. Create the following driver package folders:
  - <SCCM Root>\OSD\Lib\DriverPackages\HP\ProLiant\HP ProLiant Windows 2008 R2 x64 Driver Package
  - <SCCM Root>\OSD\Lib\DriverPackages\HP\ProLiant\HP ProLiant Windows 2012 x64 Driver Package
  - <SCCM Root>\OSD\Lib\DriverPackages\HP\ProLiant\HP ProLiant Windows 2012 R2 x64 Driver Package
13. Start the **Create Driver Package** wizard (Software Library > Operating Systems > Driver Packages Create Driver Package).
  - Name = HP ProLiant Windows 2008 R2 x64 Driver Package
  - Path = \\<Server UNC>\SMS\_<Site Code>\OSD\Lib\DriverPackages\HP\ProLiant\HP ProLiant Windows 2008 R2 x64 Driver Package
14. Open the properties of the new driver package and specify the following:
  - Data Access tab: Select the checkbox labeled "Copy the content in this package to a package share on distribution points".
15. Start the **Create Driver Package** wizard (Software Library > Operating Systems > Driver Packages Create Driver Package). Specify the following values:
  - Name = HP ProLiant Windows 2012 x64 Driver Package
  - Path = \\<Server UNC>\SMS\_<Site Code>\OSD\Lib\DriverPackages\HP\ProLiant\HP ProLiant Windows 2012 x64 Driver Package

16. Open the properties of the new driver package and specify the following:
  - Data Access tab: Select the checkbox labeled "Copy the content in this package to a package share on distribution points".
17. Start the **Create Driver Package** wizard (Software Library > Operating Systems > Driver Packages Create Driver Package). Specify the following values:
  - Name = HP ProLiant Windows 2012 R2 x64 Driver Package
  - Path = \\<Server UNC>\SMS\_<Site Code>\OSD\Lib\DriverPackages\HP\ProLiant\HP ProLiant Windows 2012 R2 x64 Driver Package
18. Open the properties of the new driver package and specify the following:
  - Data Access tab: Select the checkbox labeled "Copy the content in this package to a package share on distribution points".

Start the **Import Drivers** wizard (Software Library > Operating Systems > Driver Import Drivers). Specify the following values:

  - a. On the **Locate Driver** step,
    - Select the button labeled "import all drivers in the following network path (UNC)".
    - Source folder = \\<Server UNC>\SMS\_<Site Code>\OSD\Lib\drivers\ws2008r2-x64
    - Specify the option for duplicate drivers = Import the driver and keep existing categories
  - b. On the **Driver Details** step,
    - Import drivers will be listed.
    - "Enable these driver and allow computers to install them" leave as-is by default.
    - "Assign this driver to one or more categories for filtering", select the **Categories** button and create a category named "HP ProLiant WS2008R2 x64".
  - c. On the **Add Driver to Packages** step, select the checkbox for "HP ProLiant Windows 2008 R2 x64 Driver Package".
  - d. On the **Add Driver to Boot Image** step, do not select anything.
  - e. Click **Next** to import the drivers.
19. Start the **Import Drivers** wizard (Software Library > Operating Systems > Driver Import Drivers). Specify the following values:
  - a. On the **Locate Driver** step,
    - Select the button labeled "import all drivers in the following network path (UNC)".
    - Source folder = \\<Server UNC>\SMS\_<Site Code>\OSD\Lib\drivers\ws2012-x64
    - Specify the option for duplicate drivers = Import the driver and keep existing categories
  - b. On the **Driver Details** step,
    - Import drivers will be listed.
    - "Enable these driver and allow computers to install them" leave as-is by default.
    - "Assign this driver to one or more categories for filtering", select the **Categories** button and create categories named "HP ProLiant WinPE 4.0 x64" and "HP ProLiant WS2012 x64".
  - c. On the **Add Driver to Packages** step, select the checkbox for "HP ProLiant Windows 2012 x64 Driver Package".
  - d. On the **Add Driver to Boot Image** step, do not select anything.
  - e. Click **Next** to import the drivers.

20. Start the **Import Drivers** wizard (Software Library > Operating Systems > Driver Import Drivers). Specify the following values:
  - a. On the **Locate Driver** step,
    - Select the button labeled "import all drivers in the following network path (UNC)"
    - Source folder = \\<Server UNC>\SMS\_<Site Code>\OSD\Lib\drivers\ws2012R2-x64
    - Specify the option for duplicate drivers = Import the driver and keep existing categories
  - b. On the **Driver Details** step,
    - Import drivers will be listed.
    - "Enable these driver and allow computers to install them" leave as-is by default.
    - "Assign this driver to one or more categories for filtering", select the **Categories** button and create categories named "HP ProLiant WinPE 5.0 x64" and "HP ProLiant WS2012R2 x64".
  - c. On the **Add Driver to Packages** step, select the checkbox for "HP ProLiant Windows 2012 x64 Driver Package".
  - d. On the **Add Driver to Boot Image** step, do not select anything.
  - e. Click **Next** to import the drivers.
21. Start the **Create Package** wizard (Software Library > Application Management > Packages Create Package). Specify the following values:
  - Name = HP ProLiant Inventory Tool
  - Select the checkbox labeled, "This package contains source files".
  - Source folder = \\<Server UNC>\SMS\_<Site Code>\OSD\Lib\packages\HP\ProLiant\inventorytool
  - Select the button labeled "Standard program".
  - Name = HP ProLiant Inventory Tool
  - Command line = hpproliantinvtool.exe
  - Program can run = Whether or not a user is logged on
22. Open the properties of the new package and specify the following:
  - Data Access tab: Select the checkbox labeled "Copy the content in this package to a package share on distribution points".

23. Create the following HP registry key and values:

**HKLM\SOFTWARE\Microsoft\SMS\HP\ProLiant**

<b>Name</b>	HP ProLiant SCCM 2012 Integration Kit
<b>Version</b>	####.##.#.##

Where ####.##.#.## is the installer product version which can be located by right-clicking on the installer kit properties, and then clicking on **Details** view.

---

**NOTE:** All values are String

---

24. Once the kit is installed, remaining operation should work. Refer the *HP ProLiant SCCM 2012 Integration Kit (v 2014.09.0) User Guide* for instructions on completing the rest of the configuration steps.



## Installing HP Maintenance Supplement Bundle(MSB) v2014.10 from SCCM

The current release of HP ProLiant Updates Catalog bundles v2014.09.0 doesn't support installing MSB v2014.10 components from SCCM. To install these components, create a custom HP Service Pack for ProLiant (SPP) by following the instructions below and then refer to *Appendix A – Deploying firmware and software updates manually* in the *HP ProLiant Updates Catalog (v 2014.09.0) User Guide* to deploy custom SPP components.

- Download `hpsum.zip` (<http://www.hp.com/go/hpsum>)
- Download full SPP ISO v2014.09.0 (<http://www.hp.com/go/spp>)
- Download MSB v2014.10 (<http://www.hp.com/go/spp>)
- Launch `hpsum\hpsum.bat`
- Add baseline > mount the SPP ISO and select the `hp\swpackages` folder
- Add baseline > extract the MSB and select the folder that contains CP\* components
- Create an output folder where you want to save custom SPP
- Select the option to make bootable ISO and source ISO location = root folder of mounted SPP ISO
- Select the baseline sources (select both SPP and MSB)
- Optionally, apply filters and customize to fit your requirements
- Select or unselect the components to be included in the custom SPP
- Create custom SPP

See the HP Smart Update Manager (HP SUM) documentation for detailed instructions on creating a custom baseline and ISO.

---

**NOTE:** There is an issue with HP SUM v7.1.0 which returns return code=3 instead of 1. The `install.cmd` sample batch file mentioned in *HP ProLiant Updates Catalog (v 2014.09.0) User Guide* (page 15) will convert return code=3 as success code and reports success to SCCM server. You can safely ignore the return code error.

---

## Issues and suggested actions

### Limitations

The release only supports HP OneView 1.20, see the specific feature user guides for more details.

### HP OneView components

HP OneView components will not work if HP OneView is not present.

### Add Capacity or Expand Cluster wizard will fail to assign HP OneView server profile when UEFI boot mode is selected

If you see a warning in your server profile, "Unable to manage boot order in UEFI or UEFI Optimized mode with the current server ROM", you don't have the appropriate ROM version. To resolve this issue, do one of the following:

- If available, update the supported ROM version
- Manage the UEFI boot order manually using RBSU
- Set boot mode to Legacy BIOS

See the *HP OneView Release Notes* for more details.