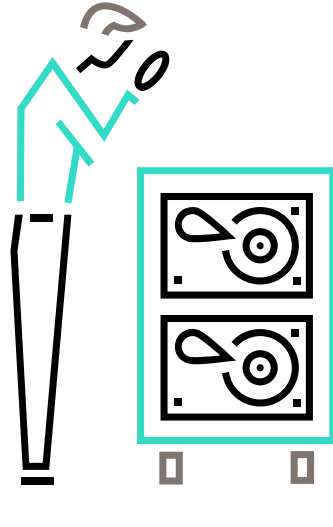


# Extend the lifecycle

## of your HPE ProLiant Gen10 and Gen10 Plus Servers

Opportunities with genuine HPE spare parts



As the HPE ProLiant Gen10 and Gen10 Plus Servers approach their End of Life (EOL), IT managers and business leaders face critical decisions. Despite the EOL status, these series remain robust and reliable cornerstones of many IT infrastructures. When customers choose to sustain existing hardware, they should consider the cost-effective alternative of extending the lifecycle of the HPE ProLiant Gen10 and Gen10 Plus equipment with genuine HPE spare parts.

### HPE ProLiant Gen10 and Gen10 Plus Server models approaching EOL

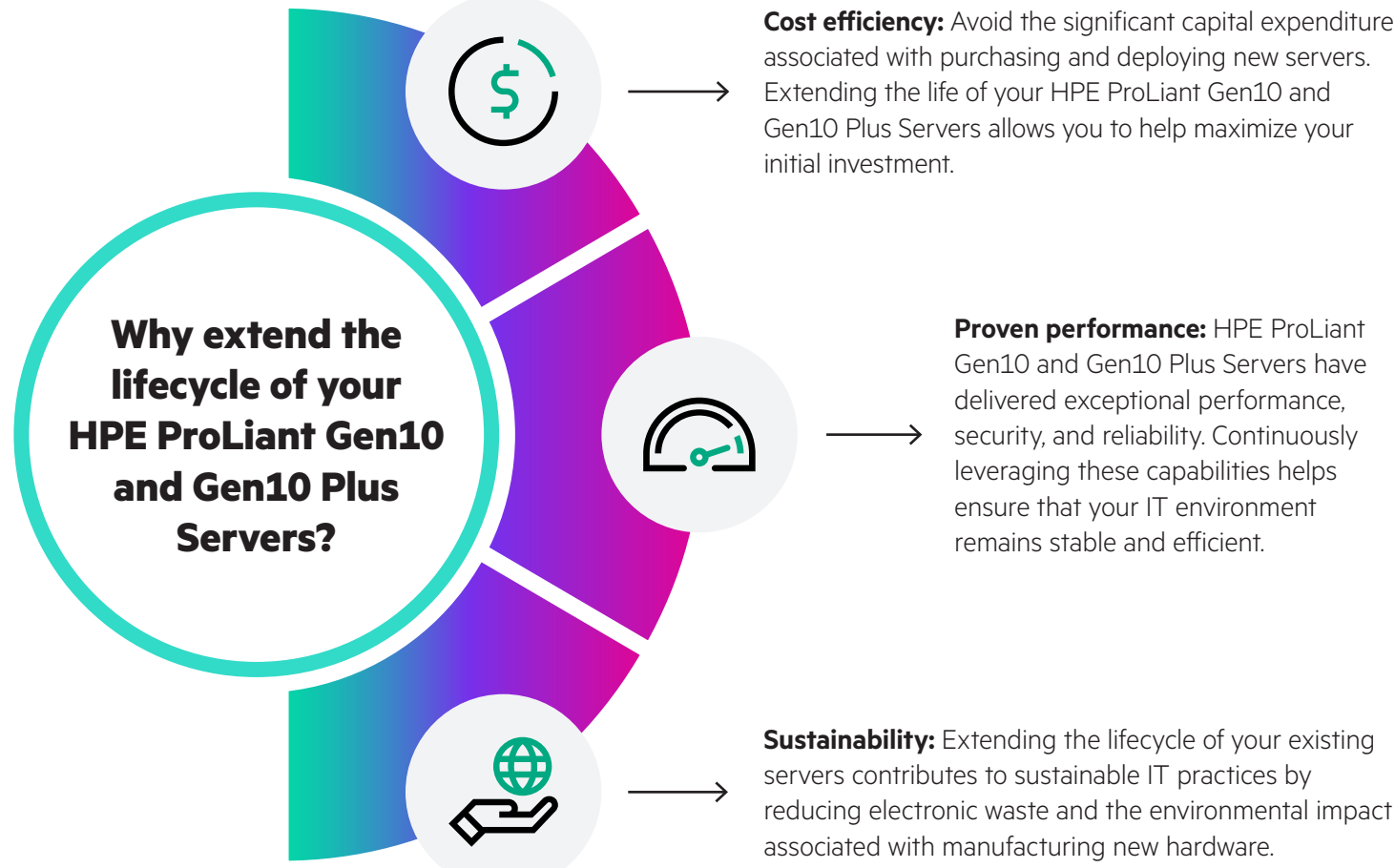
The following HPE ProLiant Gen10 and Gen10 Plus Server models are approaching their EOL:

Product	EOL date
HPE ProLiant DL360 Gen10	November 2024
HPE ProLiant DL380 Gen10	November 2024
HPE ProLiant DL325 Gen10	September 2025
HPE ProLiant DL385 Gen10	September 2025
HPE ProLiant ML350 Gen10	March 2024
HPE ProLiant ML110 Gen10	December 2025
HPE ProLiant DL560 Gen10	October 2024

And for HPE ProLiant Gen10 Plus models:

Product	EOL date
HPE ProLiant DL360 Gen10 Plus	August 2025
HPE ProLiant DL380 Gen10 Plus	August 2025
HPE ProLiant DL325 Gen10 Plus	November 2025
HPE ProLiant DL385 Gen10 Plus	November 2025
HPE ProLiant ML350 Gen10 Plus	January 2025
HPE ProLiant ML110 Gen10 Plus	April 2025
HPE ProLiant DL560 Gen10 Plus	July 2025

These servers have served businesses well with their unmatched performance, security, and reliability. Now, as they approach EOL, it is the perfect time to explore options for extending their lifecycle.



### Opportunities with genuine HPE spare parts

**01 Comprehensive availability**

Hewlett Packard Enterprise offers a full range of genuine spare parts for the HPE ProLiant Gen10 and Gen10 Plus series. From processors and memory modules to hard drives / solid state drives and network cards, you can find everything needed to keep your servers running smoothly.

**02 Guaranteed compatibility**

Genuine HPE parts are designed specifically for HPE ProLiant Gen10 and Gen10 Plus Servers, helping ensure seamless compatibility and optimal performance. This reduces the risks associated with third-party components.

**03 Extended support**

Using HPE certified spare parts may come with extended support options, providing peace of mind and assurance that your systems are in good hands.

**04 Enhanced reliability**

Genuine parts are rigorously tested and validated by HPE, helping ensure they meet the highest standards for quality and reliability. This reduces the risk of downtime and enhances the overall stability of your IT operations.

### How to get started?

- 01 Evaluate your needs**

Assess the current performance and future requirements of your IT infrastructure. Identify which components require upgrades or replacements.
- 02 Consult HPE experts**

Work with HPE or an authorized HPE partner to explore the best options for spare parts support services tailored to your specific needs.
- 03 Plan for the future**

Develop a comprehensive plan to systematically upgrade and maintain your HPE ProLiant Gen10 and Gen10 Plus Servers using genuine HPE parts, helping ensure uninterrupted service and performance.

### Conclusion

The EOL of HPE ProLiant Gen10 and Gen10 Plus Servers does not mean the end of their usefulness. By investing in genuine HPE spare parts, you can significantly extend the lifecycle of your existing equipment, helping ensure continuous performance, reliability, and cost savings. Embrace this opportunity to make the most of your investment and support sustainable IT practices

For more information on available spare parts and support services, contact your HPE representative or visit the [HPE Parts Store](#).

**Boost your IT investment with genuine HPE spare parts. Keep your HPE ProLiant Gen10 and Gen10 Plus Servers running at peak performance well into the future.**

Learn more at

[HPE Parts Store](#)

Visit [HPE.com](#)