



HPE ProLiant Compute engineered for your hybrid world



September 2025

Top challenges for enterprises

Infrastructure & Security



Downtime due to server issues

59.7%

Inability to remotely access servers

50.4%

Inability to update firmware and security patches quickly

41.2%

Efficiency & Time to Market



Time-consuming and expensive process to get staff to edge locations

57.5%

Server issues delaying development and deployment of new apps

46.5%

Resources & Budget



Limited IT resources (time, money)

58.8%

Difficult to budget for scale and growth

47.8%

Lack of centralized tool for management

32.3%

Compelling reasons to refresh

\$155k more in annual recurring costs² than modern generations

50% of servers are Gen9 or earlier¹ using

60% more power and cooling² and costing you

1: HPE ProLiant Gen11 UserEvidence Survey June 2024

2: Amortized annualizing a three-year savings calculation based on moving from 100 HPE ProLiant DL380 Gen9 to HPE ProLiant Compute Gen12. Values are estimates.

HPE ProLiant Compute Family

engineered for your hybrid world



Secured

Next-level security

with robust, security-first design, and built with multi-layered protection for now and for future threats

Optimized

More performance, and efficiency

with the economics that deliver tailored solutions to power workloads from VDI to AI

Automated

Automated, AI-driven productivity

with proactive and predictive automation from data center to edge, leveraging a single management solution



HPE ProLiant Compute

Engineered for your hybrid world



Secured

Next-level security

- **Industry-only** with advanced silicon security with custom-built ASIC
- **Industry-only** future-proof quantum threat protection*
- **Industry-only** to meet stringent federal security requirements*

Optimized

More performance and efficiency

- **Record breaking** performance, AI optimized server for fine-tuning and inference
- **Most world records** for AI inference performance benchmarks
- **Decades of innovation** and leadership offers an advantage with today's high performance and AI workloads

Automated

AI-driven productivity

- **Single console** for cloud-based operations management
- **Secure agentless connection** to servers without extra complexity
- **Enterprise-grade** distributed management
- **Only HPE** offers an in-house virtualization solution with HPE Morpheus VM Essentials

Next-level security

A man with glasses and a beard is smiling while looking at a computer monitor in an office. He is wearing a dark sweater and a lanyard. The background shows a desk with a keyboard and a laptop.

Multi-layered protection

Meets FIPS 140-3 Level 3 requirements

Quantum resistant support

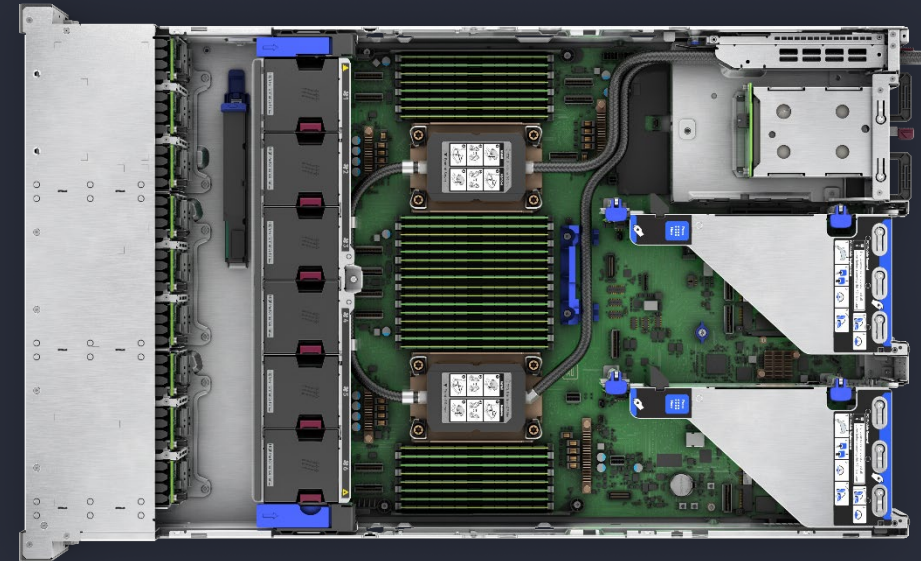
Trusted supply chain at rack level

New HPE iLO 7 delivers additional layer of protection

HPE builds on industry-leading security innovation

NEW!

Secure enclave is an independent security processor for multi-layered protection with new hardware-based vault within **HPE iLO 7**



Unparalleled, tamper-resistant protection for keys, passwords and security configuration, especially important to fortify vulnerable edge environments



Be ready for future security standards, now

First industry standard servers to meet the requirements for FIPS 140-3 Level 3 and will be pursuing certification, attained through the HPE iLO 7 with secure enclave*

First server to support NIST and CNSA 2.0 quantum resistance requirement with secure firmware signing against future quantum computing attacks*



HPE delivers the industry **leading security** from **chip-to-cloud**

Physical threats

Supply chain transitions

Chassis intrusion

Chip clipping

Unsecured edge locations

Future threats

Quantum computing

Third-party risks

Artificial intelligence

Centralized, cloud experience
to automate lifecycle tasks

Proactive security management

Industry-only top-tier security
FIPS 140-3 Level 3 certification

Industry-only future-proof
quantum threat protection

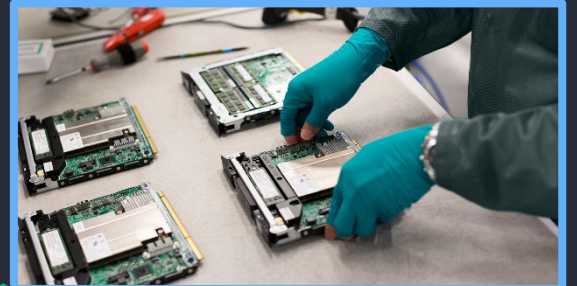
Tamper-resistant
Secure Enclave

Advanced silicon security
Immutable silicon-based boot

Trusted supply chain



Next level software security



Next level hardware security



Security starts at the factory

More performance and efficiency

A rowing team in a green boat on a blue lake. The rowers are wearing red and yellow athletic gear. The water is dark blue with white ripples from the oars. The background shows a hazy shoreline with trees and hills under a bright sky.

Consolidate and save

AI-optimized server platforms

World record performance

Superior cooling efficiency



More performance and efficiency

The most compelling case for server refresh yet

Up to **90%**
license savings with
**HPE Morpheus VM
Essentials Software⁷**



Workload sizing, reference architectures,
validation to achieve targets sooner
ADVISORY & PROFESSIONAL SERVICES



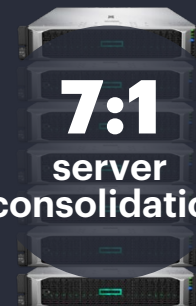
26:1
server
consolidation

Gen8¹



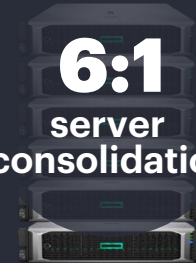
14:1
server
consolidation

Gen9²



7:1
server
consolidation

Gen10³



6:1
server
consolidation

Gen10 Plus⁴



Latest processors

Power savings per year (up to)⁵

84%

61%

65%

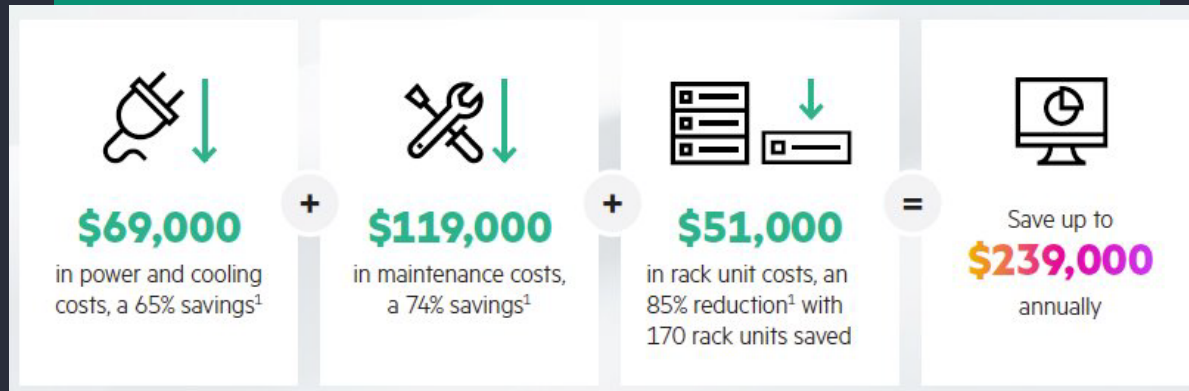
50%

SPEC and the names SPECrate are registered trademarks of the Standard Performance Evaluation Corporation (SPEC). The stated results [SPECrate2017_int_base: #36693 (1), #36691 (2), #20893 (3), #37007 (4)] are published as of 01-01-2025, see spec.org, and compared against a 48-core estimated Gen12 system. All rights reserved. (5) Power savings based on the Thermal Design Power of the systems. (6) VM software savings per term of the license. Virtualization savings analysis based on core-based license costs savings is a comparison of HPE Morpheus VM Essentials Software versus VMware vSphere Foundation. Savings do not include discounts and subject to change without notice. See as at April 9th 2025. The calculations were made by comparing to a Gen12 with 48 cores per socket. (7) (8) The performance per watt advantages are based on internal power and performance measurements on similar configured high energy efficient servers and compared against an estimated 86-core Gen12 system.

Cost saving estimations of refreshing now!

Aging servers may still be working, but at what cost?

Refreshing from Gen10 to Gen12



Consolidating **100** HPE ProLiant DL380 Gen10 to **15** HPE ProLiant Compute DL380 Gen12



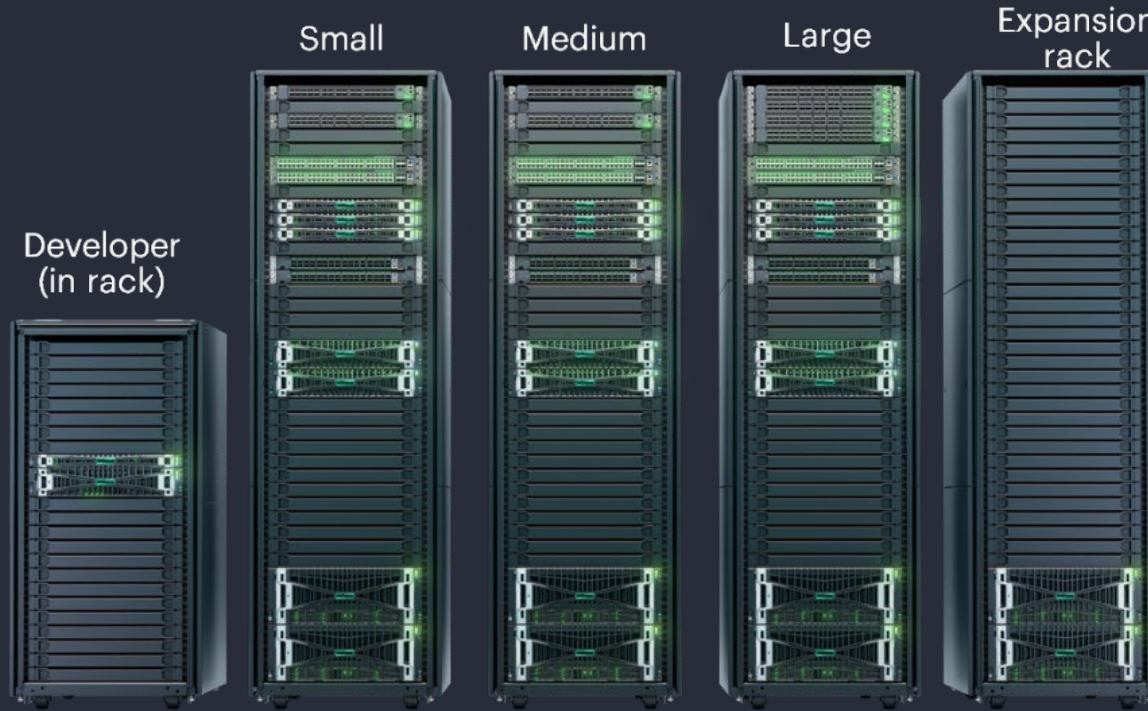
Try HPE ProLiant Savings Estimator today:
[HPE.com/ProLiant/savings](https://www.hpe.com/ProLiant/savings)



Fund the refresh and drive circularity
HPE FINANCIAL SERVICES

Amortized annualizing a three-year savings calculation, replacing 100 hundred HPE ProLiant DL380 Gen10 with 15 HPE ProLiant DL380 Gen12. Rack units calculated based on HPE server specifications and savings estimated at \$25 per rack unit per month. Maintenance and support costs based on HPE pricing. Power cost and savings is an estimate of national average (IIRC) and on the Thermal Design Power of the systems. Values validated by Enterprise Services Group (ESG) validation study. SPEC and the names SPECrate are registered trademarks of the Standard Performance Evaluation Corporation (SPEC). The stated results [SPECrate2017_int_base: #36693 (1), #36691 (2), #20893 (3), #37007 (4)] are published as of 01-01-2025, see spec.org, and compared against a 48-core estimated Gen12 system. All rights reserved.

NVIDIA AI Computing by HPE



Build, deploy, and implement AI solutions
HPE AI SERVICES

HPE ProLiant AI-optimized servers power HPE Private Cloud AI



Eight new world records on top of 23 world records



HPE ProLiant DL380a Gen12



HPE ProLiant DL384 Gen12



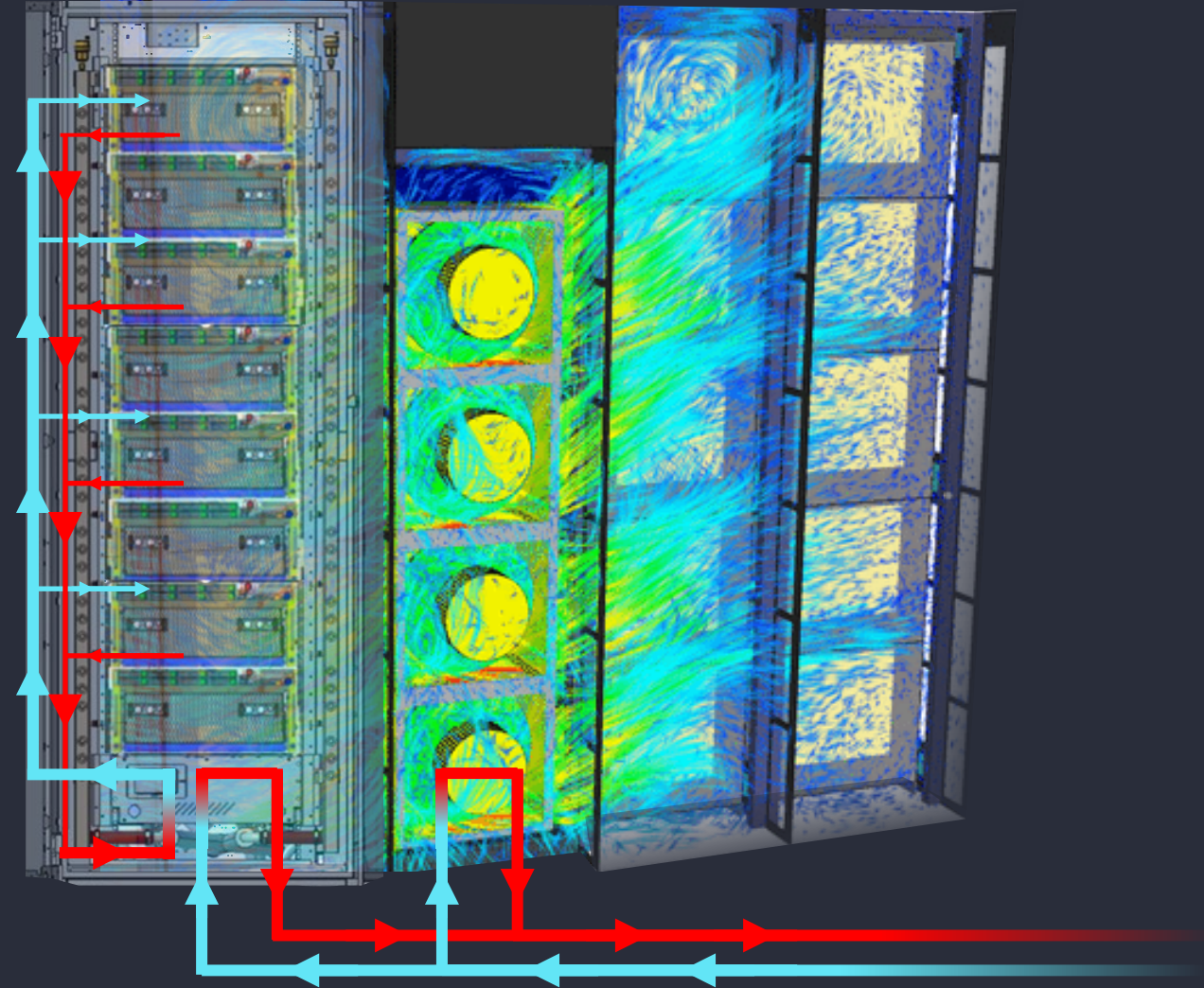
HPE ProLiant DL385 Gen11

Industry leader in direct liquid-cooling

Bringing decades of innovation and expertise from exascale to the edge

#1, #2 & #3 world's fastest direct-liquid cooled supercomputers

11 of the world's top 20 most energy-efficient direct liquid-cooled supercomputers



Automated, AI-driven productivity

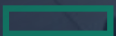


Predictive AI insights

Energy and carbon intelligence

Improved map-based visibility

Multi-vendor management



Streamline IT operations, everywhere

Gain new insights

Compute Ops Management

Manage

Active health system log analyzer

Upload an active health system (AHS) log file for a server not controlled by Compute Ops Management and download server information.

Upload a AHS log file to analyze

Upload AHS log file

ProductName	ProLiant DL380 Gen10
SerialNumber	2M22160
HardwareID	P03208-8322M2216
BaseProcessor	2025-05-15 21:04:22.357806-00:00 UTC
PowerState	Not Available
Chassis	ChassisType: FormFactor: Rack Mount Chassis: 2U
I/O	ILDFirmware: iLO 5 v2.7p12 built on Apr 18 ILOStandard: ILO standard
BIOS	BIOSVendor: HPE BIOSVersion: URS V2.62
Processor	MaxSpeedMHz: Model: 8000 intel(R) Xeon(R) P
Device	FirmwareVersion: Location: Embedded ALOM: N/A Embedded RAID: N/A PCI Slot 1: PCI Slot 2: PCI Slot 3: 2.5 Embedded Device

Expedite root cause analysis of server AHS files

Reduce complexity



Seamless multi-vendor server monitoring

Enhance security

Manage

Approval policy

Enable approval policy for actions.

Policy Requests

Search

Action	Resource	Requested by	State	Approval policy
Update firmware	Group name	Umar Siddiqui	Requested	PolicyName
Update iLO firmware	Group name	Umar Siddiqui	Approved	PolicyName
Update iLO firmware	Group name	Umar Siddiqui	Declined	PolicyName
Update iLO firmware	Group name	Umar Siddiqui	Cancelled	PolicyName

Update firmware request approved

Action: Update firmware

Requested by: Priti Lath

Date of request: Fri, Oct 8, 2:44 PM GMT

Approved by: Priti Lath

Date of approval: Fri, Oct 24, 4:02 PM GMT

Baseline selected: Generation: SMP 2024.11.00.00 (23 Nov 2024)

Generation: SMP 2024.11.00.00 (23 Nov 2024)

HPE drivers and software: Not included

Download components to match baseline: No

Post-off server after firmware update: No

Servers to be updated	Current baseline	Target baseline	Server group
Name: W8-R0208P8AG	SMP 2024.09.00.00 (20 Sep 2024)	SMP 2024.11.00.00 (23 Nov 2024)	Test Server group (empty)

AI-driven insights with workflow policy approvals

More uptime



De-risk adoption and speed time to value



HPE COMPUTE OPS MANAGEMENT

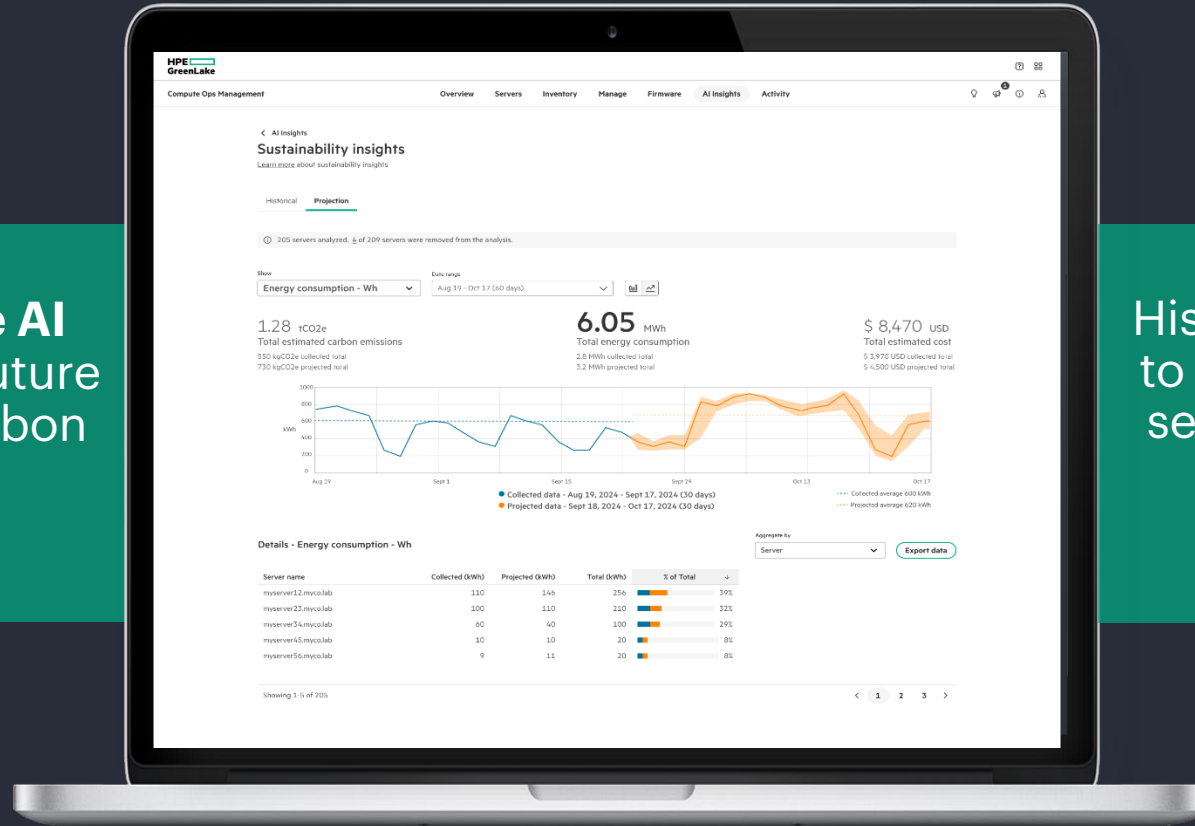


HPE TECH CARE
HPE COMPLETE CARE

Predictive AI insights for energy and carbon emissions

HPE Compute Ops Management

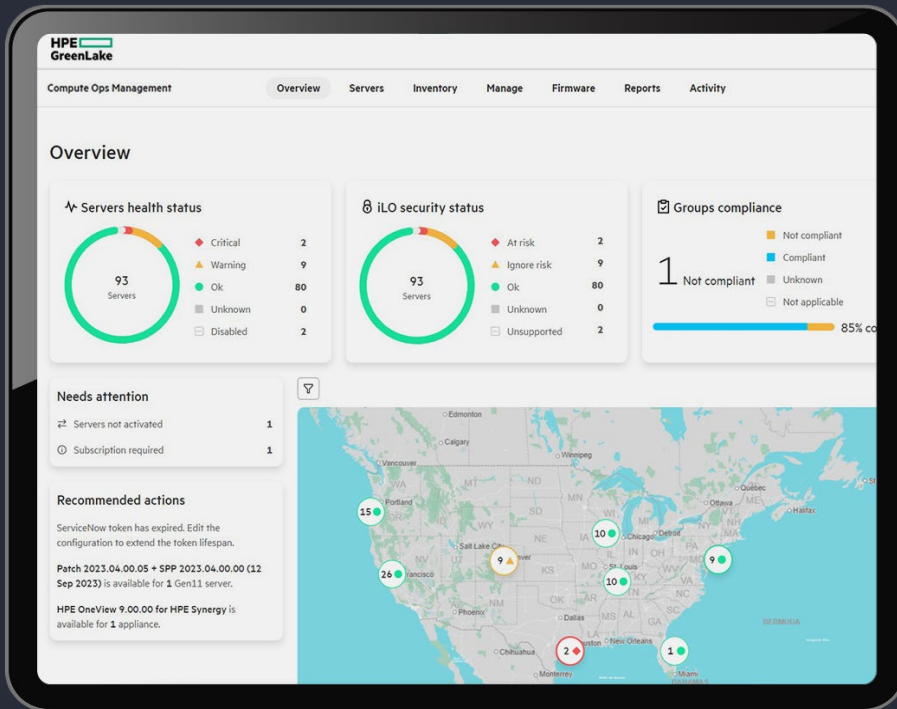
Leverage **predictive AI insights** to forecast future energy costs and carbon emissions with confidence



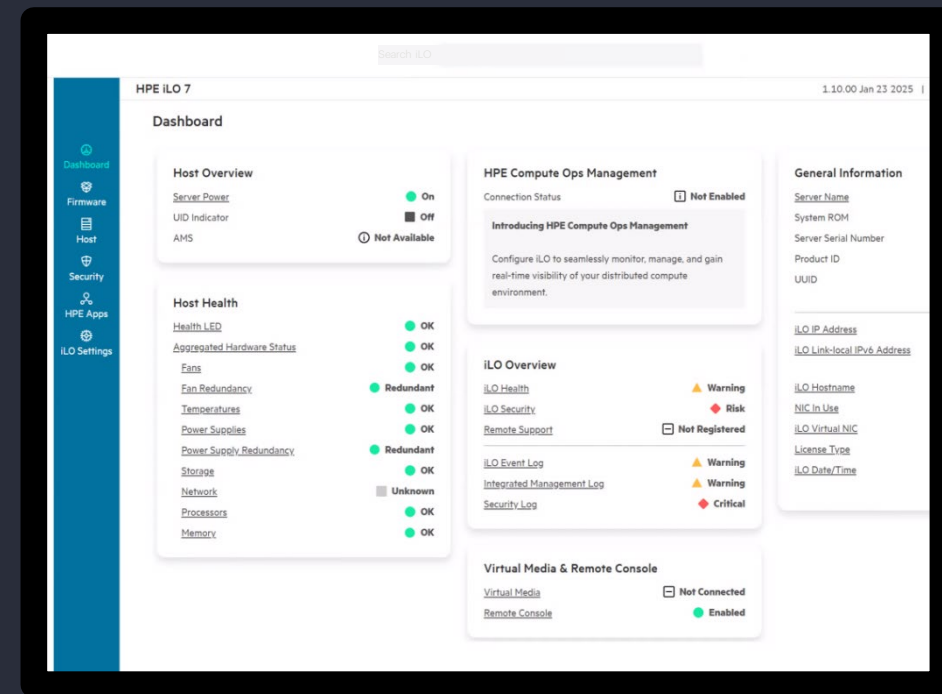
Historical data is analyzed to provide predictions on server utilization, to help **achieve energy and emissions goals**



Enabling operators with greater intelligence & control



Improved map-based visibility
with **HPE Compute Ops Management**

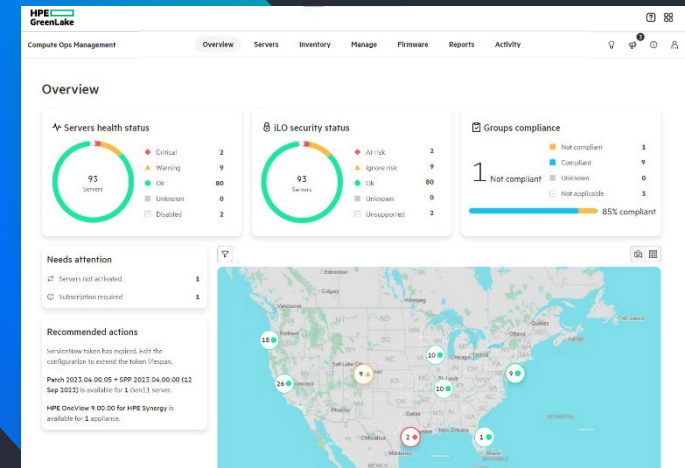


Faster, smoother user experience
with new **HPE iLO 7**

Up to 30% decreased system boot up time and
3x faster virtual media operations for enhanced usability*

* Internal HPE Testing as January 27th, 2025 comparing HPE iLO 7 versus HPE iLO 6.

HPE Compute Ops Management



Industry's best management

Secure servers proactively with policies & best practices

Automate tasks globally with AI-driven insights & operations

Up to

75%

less time spent
managing
servers²

Up to

4.8 hours

less downtime
per server per year²

Up to

\$152K

travel and software
costs saved over 3
years²

Secure connection to servers without extra complexity

Single console for robust cloud operations management

Enterprise-grade distributed management

Managed Service Provider mode



Faster access to specialized expertise
HPE TECH CARE & COMPLETE CARE

² A commissioned study conducted by **Forrester Research**, New Technology: The Projected Total Economic Impact™ of HPE Compute Ops Management, June 2024. Results are for a composite organization.

HPE Services — speed time to value

De-risk adoption & keep security in operation

Get more from your IT with an AI powered and digitally enabled service with **HPE Tech Care**

Accelerate time-to-value

Advisory & Professional Services + **Installation Services** to realize modernization gains faster.

Assure Day-2 productivity & SLAs

Optimize your entire IT environment with **HPE Complete Care**

Flexible economics & sustainability

HPE Financial Services to fund the refresh and drive circularity;
HPE GreenLake for IT consumption.

Upskill teams & drive adoption

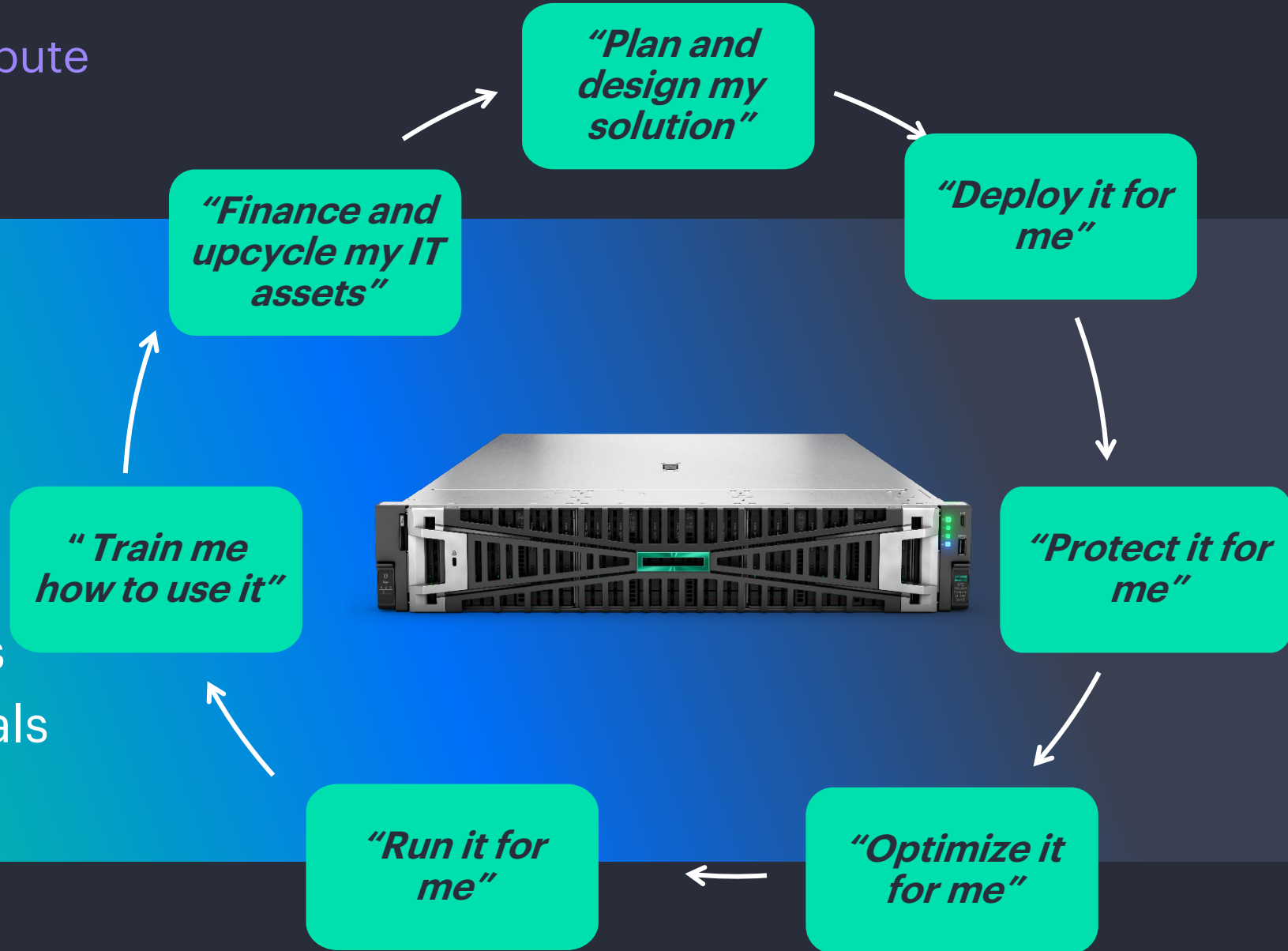
HPE Education Services to reduce time-to-proficiency and standardize best practices across operations.



HPE Services

Get the most out of your compute

7x24x365
24 time zones
30+ languages
10 Global IT ops centers
Delivered in 150+ countries
15,000+ services professionals



HPE ProLiant Compute Gen12

AI optimized



4U, 2P
HPE ProLiant Compute DL380a Gen12
Ten NVIDIA RTX PRO™ 6000 or H200 NVL



2U, 2P
HPE ProLiant Compute DL384 Gen12
NVIDIA GH200 NVL2

TCO/Power optimized



1U, 1P
HPE ProLiant Compute DL320 Gen12
Intel Xeon 6 processor



2U, 1P
HPE ProLiant Compute DL340 Gen12
Intel Xeon 6 processor

Density optimized



1U, 2P
HPE ProLiant Compute DL360 Gen12
Intel Xeon 6 processor



2U, 2P
HPE ProLiant Compute DL380 Gen12
Intel Xeon 6 processor

Blade optimized



HPE Synergy SY480 Gen12
Intel Xeon 6 processor

VM/Data optimized



1U, 1P
HPE ProLiant Compute DL325 Gen12
5th Gen AMD EPYC processor



2U, 1P
HPE ProLiant Compute DL345 Gen12
5th Gen AMD EPYC processor

Big Data optimized



4U, 4P
HPE ProLiant Compute DL580 Gen12
Intel Xeon 6 processor

SMB/Edge optimized



2P Tower
HPE ProLiant Compute ML350 Gen12
Intel Xeon 6 processor



HPE ProLiant Compute Family

engineered for your hybrid world



Secured

Optimized

Automated

**Next-level
security**

**More performance,
and efficiency**

**Automated,
AI-driven productivity**



hpe.com/ProLiant

a00145644enw

© 2025 Hewlett Packard Enterprise Development LP