

53-1004149-02
06 May 2016



Brocade Network Advisor

Installation and Migration Guide

Supporting Network Advisor 14.0.1

BROCADE

© 2016, Brocade Communications Systems, Inc. All Rights Reserved.

Brocade, Brocade Assurance, the B-wing symbol, ClearLink, DCX, Fabric OS, HyperEdge, ICX, MLX, MyBrocade, OpenScript, VCS, VDX, Vplane, and Vyatta are registered trademarks, and Fabric Vision is a trademark of Brocade Communications Systems, Inc., in the United States and/or in other countries. Other brands, products, or service names mentioned may be trademarks of others.

Notice: This document is for informational purposes only and does not set forth any warranty, expressed or implied, concerning any equipment, equipment feature, or service offered or to be offered by Brocade. Brocade reserves the right to make changes to this document at any time, without notice, and assumes no responsibility for its use. This informational document describes features that may not be currently available. Contact a Brocade sales office for information on feature and product availability. Export of technical data contained in this document may require an export license from the United States government.

The authors and Brocade Communications Systems, Inc. assume no liability or responsibility to any person or entity with respect to the accuracy of this document or any loss, cost, liability, or damages arising from the information contained herein or the computer programs that accompany it.

The product described by this document may contain open source software covered by the GNU General Public License or other open source license agreements. To find out which open source software is included in Brocade products, view the licensing terms applicable to the open source software, and obtain a copy of the programming source code, please visit <http://www.brocade.com/support/oscd>.

Brocade Communications Systems, Incorporated

Corporate and Latin American Headquarters
Brocade Communications Systems, Inc.
130 Holger Way
San Jose, CA 95134
Tel: 1-408-333-8000
Fax: 1-408-333-8101
E-mail: info@brocade.com

Asia-Pacific Headquarters
Brocade Communications Systems China HK, Ltd.
No. 1 Guanghua Road
Chao Yang District
Units 2718 and 2818
Beijing 100020, China
Tel: +8610 6588 8888
Fax: +8610 6588 9999
E-mail: china-info@brocade.com

European Headquarters
Brocade Communications Switzerland Sàrl
Centre Swissair
Tour B - 4ème étage
29, Route de l'Aéroport
Case Postale 105
CH-1215 Genève 15
Switzerland
Tel: +41 22 799 5640
Fax: +41 22 799 5641
E-mail: emea-info@brocade.com

Asia-Pacific Headquarters
Brocade Communications Systems Co., Ltd. (Shenzhen WFOE)
Citic Plaza
No. 233 Tian He Road North
Unit 1308 - 13th Floor
Guangzhou, China
Tel: +8620 3891 2000
Fax: +8620 3891 2111
E-mail: china-info@brocade.com

Document History

Title	Publication number	Summary of changes	Date
<i>Brocade Network Advisor Installation and Migration Guide</i>	53-1002570-01	New document	August 2012
<i>Brocade Network Advisor Installation and Migration Guide</i>	53-1002699-01	Update for 12.0	December 2012
<i>Brocade Network Advisor Installation and Migration Guide</i>	53-1002950-01	Update for 12.1	July 2013
<i>Brocade Network Advisor Installation and Migration Guide</i>	53-1003059-01	Update for 12.2.0	February 2014
<i>Brocade Network Advisor Installation and Migration Guide</i>	53-1003157-01	Update for 12.3.0	July 2014
<i>Brocade Network Advisor Installation and Migration Guide</i>	53-1003373-01	Update for 12.3.1	August 2014
<i>Brocade Network Advisor Installation and Migration Guide</i>	53-1003746-01	Update for 12.4.0	April 2015
<i>Brocade Network Advisor Installation and Migration Guide</i>	53-1003746-02	Update for 12.4.1	June 2015
<i>Brocade Network Advisor Installation and Migration Guide</i>	53-1003746-03	Update for 12.4.2	August 2015
<i>Brocade Network Advisor Installation and Migration Guide</i>	53-1003746-04	Update for 12.4.3	December 2015
<i>Brocade Network Advisor Installation and Migration Guide</i>	53-1004149-01	Update for 14.0.0	January 2016
<i>Brocade Network Advisor Installation and Migration Guide</i>	53-1004149-02	Update for 14.0.1	May 2016

Contents

About This Document

In this chapter	vii
How this document is organized	vii
Supported hardware and software	viii
What's new in this documentxvii
Document conventions	xix
Text formatting	xix
Notes	xix
Key terms	xix
Notice to the readerxx
Additional informationxx
Brocade resources	xx
Other industry resources	xx
Getting technical help	xxi
Document feedbackxxii

Chapter 1

Installation

System requirements	1
Server and client operating system requirements	2
Memory, host, and disk space requirements	3
Operating system cache requirements	5
Browser requirements	6
Client and server system requirements	6
Downloading the software	7
Pre-installation requirements	8
Additional pre-installation requirements for UNIX systems	8
Troubleshooting in Linux SUSE 11.3	9
Installing the application	10
Mapping the loopback address to the local host	11
Headless installation	12
Additional pre-installation requirements for UNIX systems (headless installation)	12
Performing a headless installation on Windows and UNIX systems	13
Troubleshooting the Linux headless installation	13
Collecting supportsave on Windows and Linux	13
Client-only installation	14
Installing the client-only application	14

Chapter 2

Network Advisor Configuration

Configuring Network Advisor	17
Accessing the Network Advisor interfaces	24
Logging into a server	24
Launching a remote client	25
Clearing previous versions of the remote client	26
Launching the SMC on Windows	26
Launching the SMC on Linux	26
Launching the SMIA Configuration Tool	27
Launching the SMIA Configuration Tool remote client	28
Performance collection for SMI-A only	29
Enabling or disabling performance statistics collection	29
Updating system threshold data	29
Exporting configuration data	30
Clearing performance data	30
Syslog troubleshooting	31
Finding the process	31
Stopping the process	31
Installing the ODBC driver	32
Installing the ODBC driver on Windows systems	32
Installing the ODBC driver on Linux systems	33
Smart Card driver installation	36
Installing the Smart Card driver on the local client	36
Installing the Smart Card driver on the remote client	38
Detecting and correcting a default Linux Smart Card driver	38
Configuring an explicit server IP address	40
Product improvement	41
Enabling product improvement data transfer	41
Disabling product improvement data transfer	42
Data transfer	42
Configuring remote client access to the database	43

Chapter 3

Data Migration

Upgrading the license	45
Supported migration paths	47
DCFM migration paths	49
INM migration paths	49
EFCM and Fabric Manager migration paths	49
Pre-migration requirements	49
Pre-migration requirements when migrating from one server to another	50
Additional pre-migration requirements on UNIX systems	53
Additional trial requirements	54
Migrating data	54
Cross flavor migration	61

	Migration rollback	61
	Migration rollback due to insufficient space	61
	Migration rollback in Configuration Wizard	62
Chapter 4	Uninstallation	
	Uninstalling from Windows systems	63
	Uninstalling from Windows systems (headless uninstall)	64
	Uninstalling from UNIX systems	64
	Uninstalling from UNIX systems (headless uninstall)	65
Appendix A	References	
	Network Advisor packages	67
	Scalability limits	68
	Edition feature support	69
	Management server and client ports	79

About This Document

In this chapter

• How this document is organized	vii
• Supported hardware and software	viii
• What's new in this document	xvii
• Document conventions	xix
• Notice to the reader	xx
• Additional information	xx
• Getting technical help	xxi
• Document feedback	xxii

How this document is organized

This document is organized to help you find the information that you want as quickly and easily as possible.

The document contains the following components:

- [Chapter 1, “Installation,”](#) provides system and pre-installation requirements as well as step-by-step installation instructions.
- [Chapter 2, “Network Advisor Configuration,”](#) provides step-by-step instructions to configure a fresh Network Advisor installation.
- [Chapter 3, “Data Migration,”](#) provides pre-migration requirements as well as step-by-step instructions for migrating data from a previous release of Network Advisor.
- [Chapter 4, “Uninstallation,”](#) provides step-by-step instructions for performing a partial or full uninstall of Network Advisor.
- [Appendix A, “References,”](#) provides the following information for quick lookup:
 - [Network Advisor packages](#)
 - [Scalability limits](#)
 - [Edition feature support](#)
 - [Management server and client ports](#)

Supported hardware and software

In those instances in which procedures or parts of procedures documented here apply to some devices but not to others, this guide identifies exactly which devices are supported and which are not.

Although many different software and hardware configurations are tested and supported by Brocade Communications Systems, Inc. for Network Advisor 14.0.1, documenting all possible configurations and scenarios is beyond the scope of this document.

TABLE 1 Fabric OS-supported hardware

Device name	Terminology used in documentation	Firmware level required
Brocade 200E switch	16-port, 4 Gbps FC Switch	
Brocade 300 switch	24-port, 8 Gbps FC Switch	Fabric OS v6.1.0 or later
Brocade 4012 switch	Embedded 12-port, 4 Gbps FC Switch	
Brocade 4016 switch	Embedded 16-port, 4 Gbps FC Switch	
Brocade 4018 switch	Embedded 18-port, 4 Gbps FC Switch	
Brocade 4020 switch	Embedded 20-port, 4 Gbps FC Switch	
Brocade 4024 switch	Embedded 24-port, 4 Gbps FC Switch	Fabric OS v5.3.1 or later
Brocade 4100 switch	32-port, 4 Gbps FC Switch	
Brocade 4900 switch	64-port, 4 Gbps FC Switch	Fabric OS v5.2.0 or later
Brocade 5000 switch	32-port, 4 Gbps FC Interop Switch	Fabric OS v5.2.1 or later
Brocade 5100 switch	40-port, 8 Gbps FC Switch	Fabric OS v6.1.0 or later
Brocade 5300 switch	80-port, 8 Gbps FC Switch	Fabric OS v6.1.0 or later
Brocade 5410 embedded switch	Embedded 12-port, 8 Gbps Switch	Fabric OS v6.1.0 or later
Brocade 5424 embedded switch	Embedded 24-port, 8 Gbps Switch	Fabric OS v6.1.0 or later
Brocade 5431 embedded switch	Embedded 16-port, 8 Gbps Stackable Switch	Fabric OS v7.2.0 or later
Brocade 5450 embedded switch	Embedded 16-port, 8 Gbps Switch	Fabric OS v6.2.0 or later
Brocade 5460 embedded switch	Embedded 24-port, 8 Gbps Switch	Fabric OS v6.1.0_emb or later
Brocade 5470 embedded switch	Embedded 24-port, 8 Gbps Switch	Fabric OS v6.1.0 or later
Brocade 5480 embedded switch	Embedded 24-port, 8 Gbps Switch	Fabric OS v6.1.0 or later
Brocade 6505 switch	24-port, 16 Gbps Edge switch	Fabric OS v7.0.1 or later
Brocade M6505 embedded switch	24-port, 16 Gbps embedded switch	Fabric OS v7.2.0 or later
Brocade 6510 switch	48-port, 16 Gbps switch	Fabric OS v7.0.0 or later
Brocade 6520 switch	96-port, 16 Gbps switch	Fabric OS v7.1.0 or later
Brocade 6542 switch	48-port, 16 Gbps switch	Fabric OS v7.4.0 or later
Brocade 6543 switch	24-port, 16 Gbps switch	Fabric OS v7.3.0 or later
Brocade 6547 embedded switch	48-port, 16 Gbps embedded switch	Fabric OS v7.2.0 or later
Brocade 7500 Extension switch	4 Gbps Router, Extension Switch	Fabric OS v5.1.0 or later
Brocade 7500E Extension switch	4 Gbps Extension Switch	Fabric OS v5.1.0 or later

TABLE 1 Fabric OS-supported hardware (Continued)

Device name	Terminology used in documentation	Firmware level required
Brocade AP7600 switch	4 Gbps 32-port Switch	Fabric OS v6.1.0 or later
Brocade 7800 switch	8 Gbps Extension Switch	Fabric OS v6.3.0 or later
Brocade 7840 switch	16 Gbps 24-FC port, 18 GbE port Switch	Fabric OS v7.3.0 or later
Brocade 8000 switch	8 Gbps 8-FC port, 10 GbE 24-DCB port Switch	Fabric OS v6.1.2_CEE
Brocade 8470 FCoE embedded switch	FCoE Embedded Switch	Fabric OS v6.3.1_CEE
Brocade VA-40FC switch	8 Gbps 40-port Switch	
Brocade Encryption Switch	8 Gbps Encryption Switch	Fabric OS v6.1.1_enc or later
Brocade 48000 director	Director Chassis	
Brocade 48000 director with FC4-16, FC4-32, and FC4-48 Blades	Director Chassis with 4 Gbps 16-FC port, 4 Gbps 32-FC port, and 4 Gbps 48-FC port	Fabric OS v5.2.0 or later (FC4-48)
Brocade 48000 director with FR4-18i Blades	Director Chassis with 4 Gbps router, extension blades	Fabric OS v5.1.0 or later (FR4-18i)
Brocade 48000 director with FC4-16iP Blades	Director Chassis with 4 Gbps 8-FC port and 8 GbE iSCSI blades	Fabric OS v5.2.0 or later (FC4-16iP)
Brocade 48000 director with FC10-6 Blades	Director Chassis with 10 Gbps 6-port ISL blades	Fabric OS v5.3.0 or later (FC10-6)
Brocade DCX ^{1, 2}	8-slot Backbone Chassis	Fabric OS v6.0.0 or later
Brocade DCX ^{1, 2} with FC8-16, FC8-32, and FC8-48 Blades	8-slot Backbone Chassis with 8 Gbps 16-FC port, 8 Gbps 32-FC port, and 8 Gbps 48-FC port blades	Fabric OS v6.0.0 or later
Brocade DCX ^{1, 2} with FC8-64 Blades	8-slot Backbone Chassis with 8 Gbps 64-FC port blades	Fabric OS v6.4.0 or later
Brocade DCX ^{1, 2} with FR4-18i Blades	8-slot Backbone Chassis with 4 Gbps Router, Extension blade	Fabric OS v6.0.0 or later
Brocade DCX ^{1, 2} with FC10-6 Blades	8-slot Backbone Chassis with FC 10 - 6 ISL Blade	Fabric OS v6.2.0 or later
Brocade DCX ^{1, 2} with FS8-18 Blades	8-slot Backbone Chassis with Encryption Blade	Fabric OS v6.1.1_enc or later
Brocade DCX ^{1, 2} with FX8-24 Blades	8-slot Backbone Chassis with 8 Gbps 12-FC port, 10 GbE ports, 2-10 GbE ports blade	Fabric OS v6.3.1_CEE
Brocade DCX ^{1, 2} with FCoE10-24 Blades	8-slot Backbone Chassis with 10 Gbps 24-port FCoE blade	Fabric OS v6.3.1_CEE
Brocade DCX-4S	4-slot Backbone Chassis	Fabric OS v6.0.0 or later
Brocade DCX-4S with FC8-16, FC8-32, and FC8-48 Blades	4-slot Backbone Chassis with 8 Gbps 16-FC port, 8 Gbps 32-FC port, and 8 Gbps 48-FC port blades	Fabric OS v6.2.0 or later
Brocade DCX-4S with FC8-64 Blades	4-slot Backbone Chassis with 8 Gbps 64-FC port blades	Fabric OS v6.4.0 or later
Brocade DCX-4S with FR4-18i Blades	4-slot Backbone Chassis with 4 Gbps Router, Extension blade	Fabric OS v6.2.0 or later
Brocade DCX-4S with FC10-6 Blades	4-slot Backbone Chassis with FC 10 - 6 ISL Blade	Fabric OS v6.2.0 or later
Brocade DCX-4S with FS8-18 Blades	4-slot Backbone Chassis with Encryption Blade	Fabric OS v6.1.1_enc or later
Brocade DCX-4S with FX8-24 ^{1, 2} Blades	4-slot Backbone Chassis with 8 Gbps 12-FC port, 10 GbE ports, 2-10 GbE ports blade	Fabric OS v6.3.1_CEE

TABLE 1 Fabric OS-supported hardware (Continued)

Device name	Terminology used in documentation	Firmware level required
Brocade DCX-4S with FCoE10-24 Blades	4-slot Backbone Chassis with 10 Gbps 24-port FCoE blade	Fabric OS v6.3.0 or later
Brocade DCX 8510-4	16 Gbps 4-slot Backbone Chassis	Fabric OS v7.0.0 or later
Brocade DCX 8510-4 with FS8-18 Encryption Blades	16 Gbps 4-slot Backbone Chassis with Encryption blades	Fabric OS v6.1.1_enc or later
Brocade DCX 8510-4 with FC8-64 and FX8-24 ^{1, 2} Blades	16 Gbps 4-slot Backbone Chassis with 8 Gbps 64-port and 8 Gbps Router Extension blades	Fabric OS v7.0.0 or later
Brocade DCX 8510-4 with FC16-32 and FC16-48 Blades	16 Gbps 4-slot Backbone Chassis with 16 Gbps 32-port and 16 Gbps 48-port blades	Fabric OS v7.0.0 or later
Brocade DCX 8510-4 with FC8-32E and FC8-48E Blades	16 Gbps 4-slot Backbone Chassis with 8 Gbps 32-port and 8 Gbps 48-port blades	Fabric OS v7.0.1 or later
Brocade DCX 8510-4 with FC16-64 Blades	16 Gbps 4-slot Backbone Chassis with 16 Gbps 64-port blades	Fabric OS v7.3.0 or later
Brocade DCX 8510-8 ^{1, 2}	16 Gbps 8-slot Backbone Chassis	Fabric OS v7.0.0 or later
Brocade DCX 8510-8 ^{1, 2} with FS8-18 Encryption Blades	16 Gbps 8-slot Backbone Chassis with Encryption blades	Fabric OS v6.1.1_enc or later
Brocade DCX 8510-8 ^{1, 2} with FC8-64 and FX8-24 Blades	16 Gbps 8-slot Backbone Chassis with 8 Gbps 64-port and 8 Gbps Router Extension blades	Fabric OS v6.4.0 or later
Brocade DCX 8510-8 ^{1, 2} with FC16-32 and FC16-48 Blades	16 Gbps 8-slot Backbone Chassis with 16 Gbps 32-port and 16 Gbps 48-port blades	Fabric OS v7.0.0 or later
Brocade DCX-8510-8 ^{1, 2} with FCoE10-24 Blades	16 Gbps 8-slot Backbone Chassis with 10 Gbps 24-port FCoE blade	Fabric OS v7.0.0 or later
Brocade DCX 8510-8 ^{1, 2}	16 Gbps 8-slot Backbone Chassis with 16 Gbps 64-port blades	Fabric OS v7.3.0 or later
Brocade G620 switch	64-port, 32 Gbps switch	Fabric OS v8.0.0 or later
Brocade X6-4 Director ⁵	32 Gbps, 4-slot Backbone Chassis	Fabric OS v8.0.1 or later
Brocade X6-8 Director ⁵	32 Gbps, 8-slot Backbone Chassis	Fabric OS v8.0.1 or later
FA4-18 Application Platform Blade	Application Platform blade	
FC8-16 Blade	FC 8 GB 16-port blade	Fabric OS v6.2.0 or later
FC8-32 Blade	FC 8 GB 32-port blade	Fabric OS v6.2.0 or later
FC8-32E Blade ³	FC 8 GB 32-port blade	Fabric OS v7.0.1 or later
FC8-48 Blade ³	FC 8 GB 48-port blade	Fabric OS v6.2.0 or later
FC8-48E Blade	FC 8 GB 48-port blade	Fabric OS v7.0.1 or later
FC8-64 Blade	FC 8 GB 64-port blade	Fabric OS v6.4.0 or later
FC10-6 Blade	FC 10 - 6 ISL blade	Fabric OS v6.2.0 or later
FC16-32 Blade	16 Gbps 32-port blade	Fabric OS v7.0.0 or later
FC16-48 Blade	16 Gbps 48-port blade	Fabric OS v7.0.0 or later
FC16-64 Blade	16 Gbps 64-port blade	Fabric OS v7.3.0 or later
FCoE10-24 Blade ⁴	10 Gbps FCoE Port Router Blade	Fabric OS v6.3.0 or later
FR4-18i Blade	4 Gbps Router Extension blade	Fabric OS v5.1.0 or later

TABLE 1 Fabric OS-supported hardware (Continued)

Device name	Terminology used in documentation	Firmware level required
FS8-18 Encryption Blade	Encryption Blade	Fabric OS v6.1.1_enc or later
FX8-24 Blade ^{1, 2}	8 Gbps Router Extension Blade	Fabric OS v6.4.0 or later
Brocade CPX6 Control Processor Blade ⁵	Control Processor Blade	Fabric OS v8.0.1 or later
Brocade CR32-4 Core Blade ⁵	32 Gbps 8-port blade	Fabric OS v8.0.1 or later
Brocade CR32-8 Core Blade ⁵	32 Gbps 16-port blade	Fabric OS v8.0.1 or later
Brocade FC32-48 Port Blade ⁵	32 Gbps 48-port blade	Fabric OS v8.0.1 or later
Brocade SX6 Extension Blade ⁵	32 Gbps, Router Extension blade	Fabric OS v8.0.1 or later

1. Professional can discover, but not manage, this device. Use the device's Element Manager, which can be launched from the Connectivity Map, to manage the device. This device cannot be used as a Seed switch.
2. Professional Plus Trial and Licensed version can discover, but not manage, this device. Use the device's Element Manager, which can be launched from the Connectivity Map, to manage the device. This device cannot be used as a Seed switch.
3. Only supported on the DCX 8510-4 and DCX 8510-8 chassis.
4. Only supported on the DCX, DCX-4S, and DCX 8510-8 chassis.
5. 16 Gbps devices does not support Fabric OS version 8.0.0 and must directly upgrade to Fabric OS version 8.0.1 from Fabric OS 7.4.X version.

IronWare hardware and software support

The following firmware platforms are supported by this release of Network Advisor 14.0.1:

- BigIron 2.7.02e (sustaining mode) or later
- FastIron 7.2.0 or later
- NetIron 5.1.0 or later
- ServerIron (JetCore) 11.0 (sustaining mode) or later
- ServerIron ADX 12.2.0 or later
- Turbolron 4.2.0 (sustaining mode) or later

For platform-specific firmware requirements, refer to [Table 2](#).

[Table 2](#) lists the hardware platforms supported by this release of Network Advisor 14.0.1, the terminology used in the documentation, as well as any specific firmware requirements.

TABLE 2 IronWare-supported hardware

Device name	Terminology used in documentation	Firmware level required
BigIron family	Ethernet Chassis	BigIron 2.7.02e or 2.7.01b
BigIron RX-4 (BI-RX-4-AC)	Ethernet Chassis, 4 interface slots	BigIron 2.7.02e or 2.7.01b
BigIron RX-8 (BI-RX-8-AC)	Ethernet Chassis, 8 interface slots	BigIron 2.7.02e or 2.7.01b
BigIron RX-16 (BI-RX-16-AC-A)	Ethernet Chassis, 16 interface slots	BigIron 2.7.02e or 2.7.01b
Brocade 6910 Ethernet Access Switch	Ethernet Access Switch	release 2.0.2.7, loader version 1.0.1.3
FastIron family	Ethernet switch	See individual device.
FastIron CX 624S (FCX624S)	Ethernet L2/L3 Edge switch, 24 1GbE RJ45 ports	FastIron 06.0.00 and later

TABLE 2 IronWare-supported hardware (Continued)

Device name	Terminology used in documentation	Firmware level required
FastIron CX 648S (FCX648S)	Ethernet L2/L3 Edge switch, 48 1GbE RJ45 ports	FastIron 06.0.00 and later
FastIron CX 624S-HPOE (FCX624S-HPOE)	Ethernet L2/L3 Edge switch, 24 1GbE RJ45 ports, 24 POE+ ports	FastIron 06.0.00 and later
FastIron CX 648S-HPOE (FCX648S-HPOE)	Ethernet L2/L3 Edge switch, 48 1GbE RJ45 ports, 48 POE+ ports	FastIron 06.0.00 and later
FastIron CX 624S-F (FCX624S-F)	Ethernet L2/L3 Edge switch, 20 SFP ports	FastIron 06.0.00 and later
FastIron CX 624-E (FCX624-E)	Ethernet L2/L3 Edge switch, 24 1GbE RJ45 ports	FastIron 06.0.00 and later
FastIron CX 624-I (FCX624-I)	Ethernet L2/L3 Edge switch, 24 1GbE RJ45 ports	FastIron 06.0.00 and later
FastIron CX 648-E (FCX648-E)	Ethernet L2/L3 Edge switch, 48 1GbE RJ45 ports	FastIron 06.0.00 and later
FastIron CX 648-I (FCX648-I)	Ethernet L2/L3 Edge switch, 48 1GbE RJ45 ports	FastIron 06.0.00 and later
ICX 6610 Stackable switch family	Campus LAN Edge stackable switch	FastIron 07.0.3 and later Hyper Edge stacking requires FastIron 8.0 or later
ICX 6610-24 Stackable switch	24 RJ-45 ports Campus LAN Edge stackable switch	FastIron 07.0.3 and later Hyper Edge stacking requires FastIron 8.0 or later
ICX 6610-48 Stackable switch	48 RJ-45 ports Campus LAN Edge stackable switch	FastIron 07.0.3 and later Hyper Edge stacking requires FastIron 8.0 or later
ICX 6610-24F Stackable switch	24 SFP ports Campus LAN Edge stackable switch	FastIron 07.0.3 and later Hyper Edge stacking requires FastIron 8.0 or later
ICX 6610-24P Stackable switch	24 PoE ports Campus LAN Edge stackable switch	FastIron 07.0.3 and later Hyper Edge stacking requires FastIron 8.0 or later
ICX 6610-48P Stackable switch	48 PoE ports Campus LAN Edge stackable switch	FastIron 07.0.3 and later Hyper Edge stacking requires FastIron 8.0 or later
ICX 6430-24 switch	24-port Campus LAN switch	FastIron 07.4.00 and later
ICX 6430-24-HPOE switch	24-port Campus LAN HPOE switch	FastIron 07.4.00 and later
ICX 6430-48 switch	48-port Campus LAN switch	FastIron 07.4.00 and later
ICX 6430-48-HPOE switch	48-port Campus LAN HPOE switch	FastIron 07.4.00 and later
ICX 6450 stacking switch	Campus LAN stacking switch	FastIron 8.0 or later
ICX 6450-24 switch	24-port Campus LAN switch	FastIron 07.4.00 and later
ICX 6450-24 Base L3 router	24-port Campus LAN Base L3 router	FastIron 07.4.00 and later
ICX 6450-24 Base router	24-port Campus LAN Base router	FastIron 07.4.00 and later
ICX 6450-24 Premium router	24-port Campus LAN Premium router	FastIron 07.4.00 and later

TABLE 2 IronWare-supported hardware (Continued)

Device name	Terminology used in documentation	Firmware level required
ICX 6450-24-HPOE switch	24-port Campus LAN HPOE switch	FastIron 07.4.00 and later
ICX 6450-24-HPOE Base L3 router	24-port Campus LAN HPOE Base L3 router	FastIron 07.4.00 and later
ICX 6450-24-HPOE Base router	24-port Campus LAN HPOE Base router	FastIron 07.4.00 and later
ICX 6450-24-HPOE Premium router	24-port Campus LAN HPOE Premium router	FastIron 07.4.00 and later
ICX 6450-48 switch	48-port Campus LAN switch	FastIron 07.4.00 and later
ICX 6450-48 Base L3 router	48-port Campus LAN Base L3 router	FastIron 07.4.00 and later
ICX 6450-48 Base router	48-port Campus LAN Base router	FastIron 07.4.00 and later
ICX 6450-48 Premium router	48-port Campus LAN Premium router	FastIron 07.4.00 and later
ICX 6450-48-HPOE switch	48-port Campus LAN HPOE switch	FastIron 07.4.00 and later
ICX 6450-48-HPOE Base L3 router	48-port Campus LAN HPOE Base L3 router	FastIron 07.4.00 and later
ICX 6450-48-HPOE Base router	48-port Campus LAN HPOE Base router	FastIron 07.4.00 and later
ICX 6450-48-HPOE Premium router	48-port Campus LAN HPOE Premium router	FastIron 07.4.00 and later
ICX 6430 IronStack switch	24-port Campus LAN stackable switch	FastIron 07.4.00 and later
ICX 6430 IronStack Base L3 router	Campus LAN Base L3 stackable router	FastIron 07.4.00 and later
ICX 6430 IronStack Base router	Campus LAN Base stackable router	FastIron 07.4.00 and later
ICX 6430 IronStack Premium router	Campus LAN Premium stackable router	FastIron 07.4.00 and later
ICX 6450 IronStack switch	48-port Campus LAN stackable switch	FastIron 07.4.00 and later Hyper Edge stacking requires FastIron 8.0 or later
ICX 7250-24 switch	24-port Campus LAN switch	FastIron 08.0.30 and later
ICX 7250-24 Base L3 router	24-port Campus LAN Base L3 router	FastIron 08.0.30 and later
ICX 7250-24 router	24-port Campus LAN router	FastIron 08.0.30 and later
ICX 7250-24-HPOE switch	24-port Campus LAN HPOE switch	FastIron 08.0.30 and later
ICX 7250-24-HPOE Base L3 router	24-port Campus LAN HPOE Base L3 router	FastIron 08.0.30 and later
ICX 7250-24-HPOE Base router	24-port Campus LAN HPOE Base router	FastIron 08.0.30 and later
ICX 7250-48 switch	48-port Campus LAN switch	FastIron 08.0.30 and later
ICX 7250-48 Base L3 router	48-port Campus LAN Base L3 router	FastIron 08.0.30 and later
ICX 7250-48 router	48-port Campus LAN router	FastIron 08.0.30 and later
ICX 7250-48-HPOE switch	48-port Campus LAN HPOE switch	FastIron 08.0.30 and later
ICX 7250-48-HPOE Base L3 router	48-port Campus LAN HPOE Base L3 router	FastIron 08.0.30 and later
ICX 7250-48-HPOE Base router	48-port Campus LAN HPOE Base router	FastIron 08.0.30 and later
ICX 7250-24G switch	24-port 1G Campus LAN switch	FastIron 08.0.30 and later
ICX 7250-24G Base L3 router	24-port 1G Campus LAN Base L3 router	FastIron 08.0.30 and later
ICX 7250-24G router	24-port 1G Campus LAN router	FastIron 08.0.30 and later
ICX 7450-24 switch	24-port Campus LAN switch	FastIron 08.0.20 and later

TABLE 2 IronWare-supported hardware (Continued)

Device name	Terminology used in documentation	Firmware level required
ICX 7450-24 Base L3 router	24-port Campus LAN Base L3 router	FastIron 08.0.20 and later
ICX 7450-24 router	24-port Campus LAN router	FastIron 08.0.20 and later
ICX 7450-24-HPOE switch	24-port Campus LAN HPOE switch	FastIron 08.0.20 and later
ICX 7450-24-HPOE Base L3 router	24-port Campus LAN HPOE Base L3 router	FastIron 08.0.20 and later
ICX 7450-24-HPOE Base router	24-port Campus LAN HPOE Base router	FastIron 08.0.20 and later
ICX 7450-32ZP	24-port 1G or 8-port 2.5G	FastIron 08.0.40 and later
ICX 7450-32ZP switch	24-port 1G or 8-port 2.5G switch	FastIron 08.0.40 and later
ICX 7450-32ZP Base router	24-port 1G or 8-port 2.5G Base router	FastIron 08.0.40 and later
ICX 7450-32ZP router	24-port 1G or 8-port 2.5G router	FastIron 08.0.40 and later
ICX 7450-48 switch	48-port Campus LAN switch	FastIron 08.0.20 and later
ICX 7450-48 Base L3 router	48-port Campus LAN Base L3 router	FastIron 08.0.20 and later
ICX 7450-48 router	48-port Campus LAN router	FastIron 08.0.20 and later
ICX 7450-48-HPOE switch	48-port Campus LAN HPOE switch	FastIron 08.0.20 and later
ICX 7450-48-HPOE Base L3 router	48-port Campus LAN HPOE Base L3 router	FastIron 08.0.20 and later
ICX 7450-48-HPOE Base router	48-port Campus LAN HPOE Base router	FastIron 08.0.20 and later
ICX 7450-48F switch	48 SFP ports Campus LAN switch	FastIron 08.0.20 and later
ICX 7450-48F Base L3 router	48 SFP ports Campus LAN Base L3 router	FastIron 08.0.20 and later
ICX 7450-48F router	48 SFP ports Campus LAN router	FastIron 08.0.20 and later
ICX 7750-26Q switch	26 10/40 GbE QSFP+ ports	FastIron 08.0.10 and later
ICX 7750-48F switch	48 1/10 GbE SFP+ ports and six 10/40 GbE QSFP+ ports	FastIron 08.0.10 and later
ICX 7750-48C switch	48 1/10 GbE RJ-45 ports and six 10/40 GbE QSFP+ ports	FastIron 08.0.10 and later
FastIron GS	Ethernet L2/L3 Access switch	
FastIron GS-STK	Ethernet L2/L3 Access switch, stackable	
FastIron LS	Enterprise LAN switch	
FastIron LS-STK	Enterprise LAN switch, stackable	
FastIron SuperX/SX	Enterprise LAN chassis	FSX 02.4.00 and later
FastIron SX 800 and FastIron SX 1600	Enterprise LAN chassis	FSX 02.4.00 and later
FastIron 8-port 10 GbE SFP Blade	8-port 10 GbE SFP Blade	
FastIron 24-port Fiber SFP GbE Blade	24-port Fiber SFP GbE Blade	
FastIron 24-port GbE Cu Blade	24-port GbE Cu Blade	
FastIron 2-port 10GbE SFP+ Blade	2-port 10GbE SFP+ Blade	
FastIron Edge Switch X-Series	Enterprise LAN Edge switch	
FastIron Edge X 424	Enterprise LAN Edge switch, 24 10/100/1000 Mbps ports	

TABLE 2 IronWare-supported hardware (Continued)

Device name	Terminology used in documentation	Firmware level required
FastIron Edge X 624	Enterprise LAN Edge switch, 24 10/100/1000 Mbps ports	
FastIron Edge X 448	Enterprise LAN Edge switch, 48 10/100/1000 Mbps ports	
FastIron Edge X 648	Enterprise LAN Edge switch, 48 10/100/1000 Mbps ports	
FastIron Edge X 424HF	Enterprise LAN Edge switch, 20 100/1000 Mbps SFP ports	
FastIron Edge X 624HF	Enterprise LAN Edge switch, 20 100/1000 Mbps SFP ports	
FastIron WS devices	Enterprise Campus switch	
Motorola Controllers RFS4000 series	Wireless controller	Mobility 5.1
Motorola Controllers RFS6000 series	Wireless controller	Mobility 5.1
Motorola Controllers RFS7000 series	Wireless controller	Mobility 5.1
Ruckus SmartZone 100	Wireless controller	
Ruckus R500	Wireless access point	
Ruckus R700	Wireless access point	
Motorola Access Point 7131	Wireless access point	Mobility 4.1.1 (standalone mode) Mobility 5.1 ¹ (adaptive mode)
Motorola Access Point 7131N	Wireless access point	Mobility 4.1.1 (standalone mode) Mobility 5.1 ¹ (adaptive mode)
Motorola Access Point 5181	Wireless access point	Mobility 2.5.X (standalone mode) Mobility 5.1 ¹ (adaptive mode)
Motorola Access Point 6511	Wireless access point	Mobility 5.1 ¹ (adaptive mode)
NetIron family	Ethernet routers	NetIron 5.0.0 or 5.0.1
NetIron MLX (Supported regardless of license configuration)	Ethernet router	NetIron 5.0.0 or 5.0.1
NetIron MLXe (Supported regardless of license configuration)	Ethernet Core router	NetIron 5.0.0 or 5.0.1
NetIron XMR (Supported regardless of license configuration)	Ethernet Backbone router	NetIron 5.0.0 or 5.0.1
NetIron CES 2048CX (NI-CES-2048CX-AC) (Supported regardless of license configuration)	Ethernet Carrier router	NetIron 5.0.0 or 5.0.1
NetIron CER (Supported regardless of license configuration)	Ethernet Edge router	NetIron 5.0.0 or 5.0.1
NetIron XMR/MLX 2-Port 100GbE Module	2-Port 100GbE Module	NetIron 5.7.0
NetIron XMR/MLX 20-port 10GbE Module	20-port 10GbE Module	NetIron 5.7.0

TABLE 2 IronWare-supported hardware (Continued)

Device name	Terminology used in documentation	Firmware level required
NetIron MLX 4-Port 10GbE Module	4-port 10GbE Module	NetIron 5.8.0
NetIron MLX MR2 Module	Management Module	NetIron 5.8.0
NetIron MLX 4-port 10 GbE IPSEC-M	4-port 10 GbE IPSEC-M Blade	NetIron 5.8.0
NetIron MLX 2-Port 100-GbE (X2) CFP2	2-port 100 GbE (X2) CFP2 Blade	NetIron 5.8.0
NetIron MLX 20-Port 10-GbE/1GBE (X2)	20-port 10 GbE (X2) Blade	NetIron 5.8.0
ServerIron family	Application product	
ServerIron ADX 1000	Application switch	
ServerIron ADX 1000F	Application Fiber switch	ADX 12.3.03 or later
ServerIron ADX 4000	4U Application Delivery chassis	ADX 12.1.00 or later
ServerIron ADX 10000	10U Application Delivery chassis	ADX 12.1.00 or later
TurboIron Family	Data Center switch	4.1.00d or 4.2.00 or later
TurboIron 24X (T1-24X-AC)	Data Center switch	4.1.00d or 4.2.00 or later
Brocade 6650 Switch	Data Center switch	FastIron 7.5 and later
Brocade 6650 Base L3 Router	Data Center base L3 router	FastIron 7.5 and later
Brocade 6650 Router	Data Center router	FastIron 7.5 and later

1 The Management application cannot discover or manage wireless access points running Mobility 5.1.

Network OS hardware and software support

Network Advisor 14.0.1 supports the Network OS 4.1.0 firmware platform. For platform-specific firmware requirements, if any, refer to [Table 3](#).

[Table 3](#) lists the hardware platforms supported by this release of Network Advisor 14.0.1, the terminology used in the documentation, as well as any specific firmware requirements.

TABLE 3 Network OS-supported hardware

Device name	Terminology used in documentation	Firmware level required
Brocade VDX 2730 10 Gbps connection blade	VDX 2730 10 Gbps connection blade	2.1.1_fuj
Brocade VDX 2740 switch	VDX 2740 switch	4.0.0_bbd
Brocade VDX 2746 switch	VDX 2746 switch	6.0 or later
Brocade VDX 6710 switch	VDX 6710 switch	2.1 or later
Brocade VDX 6720-24 switch	VDX 6720-24 switch	2.1 or later
Brocade VDX 6720-60 switch	VDX 6720-60 switch	2.1 or later
Brocade VDX 6730-32 switch	VDX 6730-32 switch	2.1 or later
Brocade VDX 6730-76 switch	VDX 6730-76 switch	2.1 or later
Brocade VDX 6740 switch	VDX 6740 switch	4.0 or later
Brocade VDX 6740T switch	VDX 6740T switch	4.0 or later
Brocade VDX 6740T-1G switch	VDX 6740T-1G switch	4.1 or later
Brocade VDX 6940-144S switch	VDX 6940-144S switch	6.0.1 or later

TABLE 3 Network OS-supported hardware (Continued)

Device name	Terminology used in documentation	Firmware level required
Brocade VDX 6940-36Q switch	VDX 6940-36 switch	6.0 or later
Brocade VDX 8770-4 switch	VDX 8770-4 switch	3.0 or later
Brocade VDX 8770-8 switch	VDX 8770-8 switch	3.0 or later
Brocade VDX 8770 with 40G/10G Base-T/100G by line card	VDX 8770 switch with 40G/10G Base-T/100G by line card	4.1 or later

HBA hardware and software support

The following firmware platforms are supported by this release of Network Advisor 14.0.1:

- Adapter Software 3.0.0.0 or later

The hardware platforms in [Table 4](#) are supported by this release of Network Advisor 14.0.1.

TABLE 4 HBA-supported hardware

Device name	Terminology used in documentation	Firmware level required
Brocade 415 Host Bus Adapter	4 Gbps 1-port HBA	
Brocade 425 Host Bus Adapter	4 Gbps 2-port HBA	
Brocade 815 Host Bus Adapter	8 Gbps 1-port HBA	
Brocade 825 Host Bus Adapter	8 Gbps 2-port HBA	
Brocade 1860 Fabric Adapter	16 Gbps FC HBA mode 10 Gbps CNA mode 10 Gbps NIC mode	Adapter Software 3.0.0.0 or later
Brocade 1867 HBA	16 Gbps Mezzanine HBA	Adapter Software 3.0.3.0 or later
Emulex LPe12002-M8	8 Gbps 2-port HBA	
Emulex LPe16002B	16 Gbps 2-port HBA	
QLogic QLE2562-CK	8 Gbps 2-port FC HBA x4 PCIe	
QLogic QLE2672-CK	PCI Express 3.0 x4 / PCI Express 2.0 x8 low profile 16 Gbps Fibre Channel x 2	

What's new in this document

The following changes have been made since this document was last released:

- Information that was added:
 - Migration rollback in Configuration Wizard
 - Troubleshooting in Linux SUSE 11.3
- Information that was changed:
 - Supported migration paths
- Information that was deleted:
 - None

For further information about new features and documentation updates for this release, refer to the release notes.

Document conventions

This section describes text formatting conventions and important notice formats used in this document.

Text formatting

The narrative-text formatting conventions that are used are as follows:

bold text	Identifies command names Identifies the names of user-manipulated GUI elements Identifies keywords and operands Identifies text to enter at the GUI or CLI
<i>italic text</i>	Provides emphasis Identifies variables Identifies paths and Internet addresses Identifies document titles
<code>code text</code>	Identifies CLI output Identifies command syntax examples

For readability, command names in the narrative portions of this guide are presented in mixed lettercase: for example, **switchShow**. In actual examples, command lettercase is all lowercase.

Notes

The following notices and statements are used in this manual. They are listed below in order of increasing severity of potential hazards.

NOTE

A note provides a tip, guidance, or advice, emphasizes important information, or provides a reference to related information.

Key terms

For definitions specific to Brocade and Fibre Channel, see the technical glossaries on MyBrocade. See “[Brocade resources](#)” on page xx for instructions on accessing MyBrocade.

For definitions of SAN-specific terms, visit the Storage Networking Industry Association online dictionary at:

<http://www.snia.org/education/dictionary>

Notice to the reader

This document may contain references to the trademarks of the following corporations. These trademarks are the properties of their respective companies and corporations.

These references are made for informational purposes only.

Corporation	Referenced trademarks and products
Linus Torvalds	Linux
Microsoft Corporation	Windows, Windows NT, Internet Explorer
Netscape Communications Corporation	Netscape
Red Hat, Inc.	Red Hat, Red Hat Network, Maximum RPM, Linux Undercover
Oracle	Sun, Solaris, Sun Fire, Sun Ultra, Java Plug-in
The Open Group	UNIX
VMware, Inc.	VMware

Additional information

This section lists additional Brocade and industry-specific documentation that you might find helpful.

Brocade resources

To get up-to-the-minute information, go to <http://my.brocade.com> to register at no cost for a user ID and password.

White papers, online demonstrations, and data sheets are available through the Brocade website at:

<http://www.brocade.com/products-solutions/products/index.page>

For additional Brocade documentation, visit the Brocade website:

<http://www.brocade.com>

Release notes are available on the MyBrocade website.

Other industry resources

For additional resource information, visit the Technical Committee T11 website. This website provides interface standards for high-performance and mass storage applications for Fibre Channel, storage management, and other applications:

<http://www.t11.org>

For information about the Fibre Channel industry, visit the Fibre Channel Industry Association website:

<http://www.fibrechannel.org>

Getting technical help

Contact your switch support supplier for hardware, firmware, and software support, including product repairs and part ordering. To expedite your call, have the following information available:

1. Management Application Serial Number

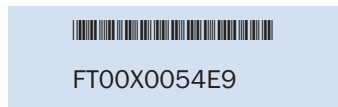
To obtain the Management application serial number, select **Help > License**. The **License** dialog box displays.

2. General Information

- Switch model
- Switch operating system version
- Software name and software version, if applicable
- Error numbers and messages received
- **supportSave** command output
- Detailed description of the problem, including the switch or fabric behavior immediately following the problem, and specific questions
- Description of any troubleshooting steps already performed and the results
- Serial console and Telnet session logs
- syslog message logs

3. Switch Serial Number

The switch serial number and corresponding bar code are provided on the serial number label, as illustrated below:



The serial number label is located as follows:

- *Brocade 300, 4100, 4900, 5100, 5300, 7500, 7800, 7840, 8000, VA-40FC, and Brocade Encryption Switch*—On the switch ID pull-out tab located inside the chassis on the port side on the left
- *Brocade 5000*—On the switch ID pull-out tab located on the bottom of the port side of the switch
- *Brocade 7600*—On the bottom of the chassis
- *Brocade 48000*—Inside the chassis next to the power supply bays
- *Brocade DCX and DCX-8510-8*—On the bottom right on the port side of the chassis, directly above the cable management comb
- *Brocade DCX-4S and DCX 8510-4*—On the bottom right on the port side of the chassis

4. World Wide Name (WWN)

Use the **licenseIdShow** command to display the WWN of the chassis.

If you cannot use the **licenseIdShow** command because the switch is inoperable, you can get the WWN from the same place as the serial number, except for the Brocade DCX. For the Brocade DCX, DCX-4S, and DCX 8510-8, access the numbers on the WWN cards by removing the Brocade logo plate at the top of the nonport side of the chassis.

Document feedback

Quality is our first concern at Brocade and we have made every effort to ensure the accuracy and completeness of this document. However, if you find an error or an omission, or you think that a topic needs further development, we want to hear from you. Forward your feedback to:

documentation@brocade.com

Provide the title and version number of the document and as much detail as possible about your comment, including the topic heading and page number and your suggestions for improvement.

Installation

In this chapter

- System requirements 1
- Downloading the software 7
- Pre-installation requirements 8
- Installing the application 10
- Headless installation 12
- Client-only installation 14

System requirements

Use the following sections to determine if you have met the requirements for this application:

- Server and client operating system requirements 2
- Memory, host, and disk space requirements 3
- Operating system cache requirements 5
- Browser requirements 6
- Client and server system requirements 6

Server and client operating system requirements

Table 5 summarizes the required operating system (OS) for servers and the packages supported by each OS version.

NOTE

Beginning with BNA 14.0.0 release, 32-bit installer is not supported.

NOTE

It is recommended that you run Network Advisor on a dedicated machine to avoid conflicts with other applications that use the same resources and ports (such as SNMP, web server, and so on).

NOTE

If the required operating system is not available, a warning message displays during installation.

TABLE 5 Server operating system requirements

Operating system	Version	Guest OS version	Supported packages
Windows®	<ul style="list-style-type: none"> 2008 R2 Data Center Edition (x86 64-bit) 2008 R2 Standard Edition (x86 64-bit) 2008 R2 Enterprise Edition (x86 64-bit) 2012 Data Center Edition (x86 64-bit) 2012 Standard Edition (x86 64-bit) 2012 R2 Data Center Edition (x86 64-bit) 2012 R2 Standard Edition (x86 64-bit) 8.1 Enterprise (x86 64-bit) 10 Enterprise (x86 64-bit) 		<ul style="list-style-type: none"> SAN with SMI Agent IP only SMI Agent only SAN with SMI Agent + IP
Linux®	<ul style="list-style-type: none"> RedHat Enterprise 6.6 Advanced (x86 64-bit) RedHat Enterprise 6.7 Advanced (x86 64-bit) RedHat Enterprise 7.0 Advanced (x86 64-bit) RedHat Enterprise 7.1 Advanced (x86 64-bit) SuSE Enterprise Server 11.3 (x86 64-bit) SuSE Enterprise Server 12 (x86 64-bit) Oracle Enterprise 6.6 (x86 64-bit) Oracle Enterprise 6.7 (x86 64-bit) Oracle Enterprise 7.0 (x86 64-bit) Oracle Enterprise 7.1 (x86 64-bit) 		<ul style="list-style-type: none"> SAN with SMI Agent IP only SMI Agent only SAN with SMI Agent + IP
Guest VMs	<ul style="list-style-type: none"> VMware® ESXi 5.1¹ VMware® ESXi 5.5 VMware® ESXi 6.0 Microsoft Hyper-V (Hyper-V Server 2008 R2, Windows Server 2012, Windows Server 2012 R2 Data Center) KVM (RH 6.5) 	Supports all server OS versions available for Windows and Linux.	Supports all packages available for Windows and Linux.

1. It is recommended that you run all Network Advisor virtual CPUs on a single physical CPU.

Table 6 summarizes the required OS for clients. Network Advisor clients are supported on 64-bit Windows and Linux systems.

TABLE 6 Client operating system requirements

Operating system	Version	Guest OS version
Windows [®]	<ul style="list-style-type: none"> • 2008 R2 Data Center Edition (x86 64-bit) • 2008 R2 Standard Edition (x86 64-bit) • 2008 R2 Enterprise Edition (x86 64-bit) • 2012 Data Center Edition (x86 64-bit) • 2012 Standard Edition (x86 64-bit) • 2012 R2 Data Center Edition (x86 64-bit) • 2012 R2 Standard Edition (x86 64-bit) • 7 Enterprise (x86 64-bit) • 8.1 Enterprise (x86 64-bit) • 10 Enterprise (x86 64-bit) 	
Linux [®]	<ul style="list-style-type: none"> • RedHat Enterprise 6.6 Advanced (x86 64-bit) • RedHat Enterprise 6.7 Advanced (x86 64-bit) • RedHat Enterprise 7.0 Advanced (x86 64-bit) • RedHat Enterprise 7.1 Advanced (x86 64-bit) • SuSE Enterprise Server 11.3 (x86 64-bit) • SuSE Enterprise Server 12 (x86 64-bit) • Oracle Enterprise 6.6 (x86 64-bit) • Oracle Enterprise 6.7 (x86 64-bit) • Oracle Enterprise 7.0 (x86 64-bit) • Oracle Enterprise 7.1 (x86 64-bit) 	
Guest VMs	<ul style="list-style-type: none"> • VMware[®] ESXi 5.1 • VMware ESXi 5.5 • VMware[®] ESXi 6.0 • Microsoft Hyper-V (Hyper-V Server 2008 R2, Windows Server 2012, Windows Server 2012 R2 Data Center) • KVM (RH 6.5) 	Supports all client OS versions available for Windows and Linux.

Memory, host, and disk space requirements

Memory requirements are only applicable when there are no other applications running on the Network Advisor server. Paging space should be equal to or exceed the physical memory size.

NOTE

To efficiently manage more than 9000 SAN ports or 200 IP devices, it is recommended to allocate a minimum of 2 GB client memory and 6 GB server memory.

NOTE

If you use sFlow, it is recommended that you add an additional 100 GB of disk space.

1 System requirements

NOTE

It is recommended that you add an additional 40 GB of disk space for the default temporary directory.

NOTE

If you enable periodic supportSave or configure the Network Advisor server as the Upload Failure Data Capture location for monitored switches, you must add additional disk space. Each switch supportSave file is approximately 5 MB and each Upload Failure Data Capture file is approximately 500 KB. To determine the disk space requirements, multiply the frequency of scheduled supportSave files by 5 MB and the expected Upload Failure Data Capture files by 500 KB before the planned periodic purge activity.

[Table 7](#) summarizes the memory, host, and disk space requirements for a remote client.

TABLE 7 Memory, Host, and Disk space requirements for remote client

Resources	Small	Medium	Large
Installed Memory	4 GB	4 GB	4 GB
Processor Core Count (including physical and logical cores)	2 (1 physical and 1 virtual)	4 (2 physical and 2 virtual)	4 (2 physical and 2 virtual)
Disk Space	1 GB	1 GB	1 GB

Table 8 summarizes the minimum system requirements for server (plus 1 client) installation.

TABLE 8 Minimum system requirements for server (plus 1 client) installation

Resources	Professional Edition	Professional Plus or Enterprise Edition
Installed Memory	6 GB	6 GB
Processor Core Count (including physical and logical cores)	2	2
Disk Space	10 GB	20 GB

Table 9 summarizes the recommended system requirements for server (plus 1 client) installation.

TABLE 9 Recommended system requirements for server (plus 1 client) installation

Resources	Small	Medium	Large
Installed Memory	16 GB	16 GB	16 GB
Processor Core Count (including physical and logical cores)	2 (1 physical and 1 virtual)	4 (2 physical and 2 virtual)	8 (4 physical and 4 virtual)
Disk Space	20 GB	80 GB	100 GB

Operating system cache requirements

It is recommended that you use the System managed size (the OS allocates the required cache); however, if you choose to use a custom size, make sure you use the following memory settings for your operating system.

The virtual memory requirements for Windows system is 1 GB for minimum paging file size and 4 GB for maximum paging file size

TABLE 10 Linux swap space requirements

Installed physical memory (RAM) size	Recommended swap size
4 GB	4 GB
Greater than 4 GB and less than 8 GB	Equal to the amount of RAM
Greater than or equal to 8 GB and less than 64 GB	5 time the amount of RAM

NOTE

For networks with more than 9000 ports, the recommended memory allocation is 6 GB.

Browser requirements

The launch of Network Advisor remote client, and the launch of the Server Management Console, Launch in Context (LIC), and the Element Manager (Web Tools) from the application are supported from the following browsers with a Java plug-in:

- Browsers
 - Windows Internet Explorer 11.0.9 on Windows
 - Firefox 24 and later on Windows or Linux
 - Google Chrome 33 on Windows
- Java Plug-ins – For the current supported JRE version for Network Advisor remote client, and the launch of the Server Management Console, Launch in Context (LIC), and Web Tools, refer to the Release Notes.

NOTE

For higher performance, use a 64-bit JRE.

NOTE

If the minimum system requirement is not met, you will be blocked from the configuration and an error message will be displayed.

For the website listing patch information, go to
<http://www.oracle.com/technetwork/java/javase/downloads/index.html>.

Client and server system requirements

NOTE

Network Advisor is not supported in a Network Address Translation (NAT) environment where the server and client are on different sides of the NAT Server.

Network Advisor has the following client and server system requirements:

- In the Professional edition, a single server supports a single client, which must be a local client only.
- In Professional Plus and Enterprise editions, a single server supports a maximum of 25 clients, which can be local on a 64-bit server or remote on 64-bit servers.
- In Professional Plus and Enterprise editions, a single server supports a maximum of 25 clients, which can be local or remote on 64-bit servers. To support more than 8 clients, you must make the following changes to your configuration:
 - Increase the server memory size. You can configure the server memory size from the **Options** dialog box, **Memory Allocations** pane. For instructions, refer to the *Network Advisor User Manual* or online help.
 - Increase the PostgreSQL database shared buffers memory allocation to 1024 MB by editing the `Install_Home\data\databases\postgresql.conf` file.

Downloading the software

You can download the software and documentation from the MyBrocade website.

1. Go to the MyBrocade website.

<http://my.brocade.com/>

2. Enter your user ID and password.

If you do not already have a MyBrocade account, you can create one.

3. Select **MyBrocade** from the **Take me to** list, if necessary.
4. Click **LOG IN**.
5. Click **downloads** on the main page.
6. Select **Management Software** from the **Download by** list.
7. Click **Brocade Network Advisor** in the **Product Name** list.
8. Select the highest version number for the latest GA code.

For example, click **Brocade Network Advisor 14.0.0**, then click **Brocade Network Advisor 14.0.1 Brocade GA**.

To download the documentation, click **Brocade Network Advisor 14.0.1 Manuals** and then select the manual you want to download.

9. Select one of the following links to download the software:

- Network Advisor 14.0.1 GA for Windows
- Network Advisor 14.0.1 GA for Linux

You can also access the release notes and md5 Checksum from this location.

10. Read the **Export Compliance**, select the certification check box, and click **Submit**.
11. Read the **Brocade End User License Agreement** and click **I Accept**.
12. Click **Save** on the **File Download** dialog box.
13. Browse to the location where you want to save the software and click **Save**.

Pre-installation requirements

Before you install Network Advisor, make sure you meet the following requirements.

- Make sure all system requirements have been met prior to installation. For specific system requirements, refer to [“System requirements”](#) on page 1.
- To avoid errors, close all instances of the application before beginning the installation or uninstallation procedures.

For UNIX system, if you still receive error messages after closing the application, enter the following commands:

```
#ps -ef | grep -i "" to list the process IDs
```

```
#kill -9 "Process_ID" where Process_ID is any Management application process
```

Additional pre-installation requirements for UNIX systems

- Make sure that an X Server is available for display and is configured to permit X Client applications to display from the host on which they are installing the Network Advisor server (typically, this simply requires that the systems console be present and running with a logged-in user on the X Server-based desktop session, such as KDE, GNOME, and so on).

If this is a headless unit with no console, refer to [“Additional pre-installation requirements for UNIX systems \(headless installation\)”](#) on page 12.

- Make sure that the DISPLAY environment variable is correctly defined in the shell with a valid value (for example, to display to the local console, `export DISPLAY=:0.0`, or to display to a remote system that has an X Server running, `export DISPLAY=Remote_IP_address:0.0`). You may also need to consider a firewall that might block the display to the X Server, which listens by default on TCP port 6000 on the remote host.

To display to a remote system, you need to permit the remote display of the X Server by running the `xhost +IP` command, where IP is the IP address of the Network Advisor server host from the X-based desktop of the remote system.

- Make sure you test the DISPLAY definition by running the `xterm` command, from the same shell from which you run `install.bin`. A new X terminal window to the destination X Server display should open.
- For Linux OS with the SELinux security policy enabled, make sure you complete the following steps.
 1. Disable the SELinux security policy using the `setenforce 0` command.
 2. Install the application (refer to [“Installing the application”](#) on page 10).
 3. Enable the SELinux security policy using the `setenforce 1` command.

Troubleshooting in Linux SUSE 11.3

Case 1:

Follow the steps to troubleshoot when the installation fails with error saying “error while loading shared libraries: libreadline.so.6: cannot open shared object file: No such file or directory”.

1. Install libreadline.so.6.
 - a. Launch terminal
 - b. Enter **wget**
`http://download.opensuse.org/distribution/11.3/repo/oss/suse/x86_64/libreadline6-6.1-8.1.x86_64.rpm`
 - c. `rpm -Uvh libreadline6-6.1-8.1.i586.rpm --replacepks`
libreadline.so.6, libreadline.so.6.1 will be created in /lib64 folder
2. Install the application (Refer to [“Installing the application”](#))

Case 2:

Follow the steps to troubleshoot when the installation fails with error saying “mysql: symbol lookup error: /usr/local/lib/libreadline.so.6: undefined symbol: UP”.

1. Copy libreadline.so.6.1 and libreadline.so.6 from /lib64 to /usr/local/lib
 - a. `cp /lib64/libreadline.so.* /usr/local/lib`
 - b. Go to folder path `cd /usr/local/lib`
 - c. Enter `#ldconfig`
 - d. Enter `#apt-get update`
2. Install the application (Refer to [“Installing the application”](#))

Installing the application

Before you install the application, make sure your system meets the minimum pre-installation requirements (refer to “[Pre-installation requirements](#)” on page 8). If you are migrating data, refer to “[Data Migration](#)” on page 45.

NOTE

On Windows systems, you must be an Administrator with Read and Write privileges to install Network Advisor.

NOTE

On UNIX systems, you must be the root user to install Network Advisor.

To install the new application version, complete the following steps.

1. Choose one of the following options:
 - For Windows systems, navigate to the *Download_Location\Application_Name\windows* directory, right-click *install.exe* and select **Run as administrator**.
 - For UNIX systems, complete the following steps.
 - a. On the Management application server, navigate to the following directory:
Download_Location/Application_Name/UNIX_Platform/bin
 - a. Type the following at the command line:

```
ulimit -n 2000
```
 - b. Type the following at the command line:

```
./install.bin
```

OR

```
sh install.bin
```

NOTE

On Linux systems, if you double-click the *install.bin* file, select **Run**. Do not select **Run in Terminal**.

2. Click **Next** on the **Introduction** screen.
3. Read the agreement on the **License Agreement** screen, select **I accept the terms of the License Agreement**, and click **Next**.
4. Select the usual location for your system application files (for example, *D:\Program Files\Application_Name* or *opt/Application_Name*) on the **Select Install Folder** screen and click **Next**.

NOTE

Do not install to the root directory. For example, *C:\ (Windows)* or */root (UNIX)*.

5. Review the displayed installation summary on the **Pre-Installation Summary** screen and click **Install**.
6. Make sure the **Launch Configuration** check box is selected (default) on the **Installation Complete** screen, and click **Done**.

NOTE

If a minimum of 10 GB space is not available on your server during installation, a warning message displays and installation fails.

If the localhost is not mapped to the loopback address, an error message displays. You must map the loopback address to the localhost (refer to [“Mapping the loopback address to the local host”](#) on page 11) before you configure the application.

If the localhost is mapped to the loopback address, the configuration wizard displays. To configure the application, refer to one of the following sections:

- If this is a fresh installation, refer to [“Network Advisor Configuration”](#) on page 17.
- If you are upgrading from a previous version and need to migrate data, refer to [“Data Migration”](#) on page 45.

For Linux systems, the following lists the folder permissions configured during installation:

- *Install_Home* – 775
- *conf* – 775
- *conf/schema* folder (including sub-folders) – 775
- *data* – 775
- *database* – 700
- *db* (including sub -folders) – 775
- *temp* – 775
- *support* – 777
- All other folders – 774

Mapping the loopback address to the local host

To map the loopback address to the local host, complete the following steps.

1. Open the hosts file.

For Windows, the hosts file is located in the `WINDOWS\system32\drivers\etc` directory.

For Linux, the hosts file is located in the `/etc` directory

2. Add the following entries:

```
# For IPV4 machine
127.0.0.1      localhost

# For IPV6 enabled machine
127.0.0.1      localhost
::1           localhost
```

1 Headless installation

3. Save and close the file.

To configure the application, refer to one of the following sections:

- If this is a fresh installation, refer to “[Network Advisor Configuration](#)” on page 17.
- If you are upgrading from a previous version and need to migrate data, refer to “[Data Migration](#)” on page 45.

Headless installation

Headless installation, also known as *silent mode installation*, is fully supported on all platforms. Once initiated, the headless installation requires minimal user interaction and runs based on the default values provided. Headless installation performs the actual installation; however, you must use the Configuration wizard in graphical user interface mode to copy data and settings, configure the FTP or SCP server, configure IP, and configure server ports.

Before you install Network Advisor, make sure you meet the following requirements.

Make sure all system requirements have been met prior to installation. For specific system requirements, refer to “[System requirements](#)” on page 1.

Additional pre-installation requirements for UNIX systems (headless installation)

An X Server display is required, even when performing a headless installation, to run the initial configuration. Before you install Network Advisor, complete the following:

- Make sure that an X Server is available for display and is configured to permit X Client applications to display from the host on which they are installing the Network Advisor server (typically, this simply requires that the system console be present and running with a logged-in user on the X Server-based desktop session, such as KDE, GNOME, and so on).

The DISPLAY can be any host X Server (for example, DISPLAY can be set to display the configuration to another UNIX system that has an X-based desktop).

- Make sure that the DISPLAY environment variable is correctly defined in the shell with a valid value (for example, to display to the local console, `export DISPLAY=:0.0`, or to display to a remote system that has an X Server running, `export DISPLAY=Remote_IP_Address:0.0`).

To display to a remote system, you need to permit the remote display of the X Server by running the `xhost +IP` command, where IP is the IP address of the Network Advisor server host, on a local terminal window of the X-based desktop of the remote system.

You may also need to consider a firewall that might block the display to the X Server, which listens by default on TCP port 6000 on the remote host.

- Make sure you test the DISPLAY definition by running the `xterm` command from the same shell from which you run `install.bin`. A new X terminal window to the destination X Server display should open.

Performing a headless installation on Windows and UNIX systems

To perform a headless installation through the CLI, download the software (refer to [“Downloading the software”](#) on page 7).

- For Windows systems, complete the following steps:
 1. Select **Start > Programs > Accessories**, right-click **Command Prompt** and select **Run as administrator**.

2. Execute this command:

```
install.exe -i silent -DHEADLESS_CONFIG_MODE="false"
```

- For UNIX systems, open a UNIX shell and execute this command:

```
sh install.bin -i silent -DHEADLESS_CONFIG_MODE="false"
```

The application installs in silent mode using default settings.

To configure the application, refer to one of the following sections:

- If this is a fresh installation, refer to [“Network Advisor Configuration”](#) on page 17.
- If you are upgrading from a previous version and need to migrate data, refer to [“Data Migration”](#) on page 45.

Troubleshooting the Linux headless installation

If you have completed all of the pre-Installation requirements and you are still unable to install the application, run the following commands on the host.

1. Go to *Install_Home/* (the directory containing *install.bin*).
2. Execute `strace -f -F -v -s 1024 -o NetworkAdvisorinstall.txt ./install.bin`.
3. Execute `rpm -qa >> system.txt`.
4. Execute `ps -elf >> system.txt`.
5. Execute `md5sum install.bin >> system.txt`.
6. Execute `df -k >> system.txt`.
7. Execute `sh -c "xterm -e echo nothing >> system.txt 2>&1"`.
8. Execute `env >> system.txt`.
9. Execute `sh -c "DISPLAY=:0.0 xterm -e echo nothing >> system.txt 2>&1"`.
10. Execute `zip support1.zip NetworkAdvisorinstall.txt system.txt`.

Send the *support1.zip* file output from the above (containing *install.txt* and *system.txt*) to Technical Support. This file will help Technical Support isolate the issue.

Collecting supportsave on Windows and Linux

To collect server supportsave, run the script file located at:

```
<BNA_HOME>\bin\commandsupportsave
```

Once the script file is triggered, the server supportsave is collected at the following location:

1 Client-only installation

<BNA_HOME>\support

Client-only installation

You can install a client-only application on a machine other than the server (without using a web browser) by creating a client bundle on the server, and then copying and installing that client on another machine.

Installing the client-only application

NOTE

The client bundle is supported only on a 64-bit OS.

NOTE

To download the client bundle, the browser operating system and server operating system must be the same.

NOTE

The download client is bundled with the Network Advisor server java runtime environment package.

1. Click the client bundle and download the file.
2. Extract the client bundle.
3. Navigate to the `extract_location\bin` directory and run the appropriate .bat file.
 - For Windows, navigate to `C:\Users\user_name\desktop\windows-clientbundle\bin` and run `dcmclient.bat`.
 - For Linux, navigate to `opt/linux-clientbundle/bin` and run `dcmclient`.

If you modify the data in the **Options** dialog box, the Client bundle must be triggered manually.

- For Windows, navigate to `Install_Home\bin` and run `create-client-bundle.bat`.
 - For Linux, navigate to `Install_Home\bin` and run `create-client-bundle`.
-

NOTE

If the default starting port number is changed to some other port number, you must restart the server, regenerate the client bundle, and then download the client bundle to launch the client.

The **Network Advisor Log In** dialog box displays.

4. Enter the IP address of the Network Advisor server in the **Network Address** list.
-

NOTE

The server must be the exact same version, edition, starting port number, and network size as the client.

NOTE

You can remove a server from the **Network Address** list by selecting the IP address and clicking **Delete**.

5. Enter your user name and password.

The defaults are Administrator and password, respectively.

NOTE

Do not enter Domain\User_Name in the **User ID** field for LDAP server authentication.

6. Select or clear the **Save password** check box to choose whether you want the application to remember your password the next time you log in.
7. Click **Login**.
8. Click **OK** on the **Login Banner** dialog box.
The Network Advisor application displays.

1 Client-only installation

Network Advisor Configuration

In this chapter

- [Configuring Network Advisor](#) 17
- [Accessing the Network Advisor interfaces](#) 24
- [Performance collection for SMI-A only](#) 29
- [Syslog troubleshooting](#) 31
- [Installing the ODBC driver](#) 32
- [Smart Card driver installation](#) 36
- [Configuring an explicit server IP address](#) 40
- [Product improvement](#) 41
- [Configuring remote client access to the database](#) 43

Configuring Network Advisor

If you have not installed the application, refer to [“Installation”](#) on page 1. If you are migrating data, refer to [“Data Migration”](#) on page 45.

To configure Network Advisor, complete the following steps.

1. Click **Next** on the **Welcome** screen.
2. Click **No, don't copy any data and settings** (default) on the **Copy Data and Settings (Migration)** screen and click **Next**.

NOTE

You cannot migrate data from an earlier release of Network Advisor to 14.0.1 after you complete the 14.0.1 configuration.

To migrate data from a previous management application version, refer to [“Data Migration”](#) on page 45.

3. Select one of the following options on the **Package** screen and click **Next**.
 - **SAN with SMI Agent**
 - **IP**
 - **SAN with SMI Agent + IP** (default)
 - **SMI Agent Only** (Go to [step 8.](#))

NOTE

SMI Agent is not supported in a Professional edition configuration.

NOTE

If you choose to install only the SMI Agent, the configuration defaults to the SAN Enterprise package. When you open the Network Advisor client, a **License** dialog displays, where you must enter a SAN Enterprise license key to use the client. If you enter a SAN Professional Plus license key, you must downgrade your license and restart all services for the changes to take affect. For instructions, refer to the user manual or online help.

4. Select one of the following options on the **Installation Type** screen and click **Next**.

NOTE

The DCX and DCX 8510-8 Backbone chassis require the Enterprise edition.

- **Network Advisor - Licensed version** (default)
Continue with [step 5](#). Requires you to enter a license key during configuration to enable features and configuration.
- **Network Advisor - 120 days Trial**
Go to [step 6](#). Enables you to manage IP, SAN, or SAN and IP networks from a single interface for 120 days.

ATTENTION

If you choose to install Trial, once the trial period ends (120 days), you must upgrade to Licensed software.

- **Network Advisor - Professional**
Go to [step 6](#). Bundled with Fabric OS and IronWare OS devices to manage small IP or SAN networks from a single interface. SMI Agent is not available with Professional.

5. (Licensed software only) If you are installing licensed software, browse to the license file (.xml) and click **Next** on the **Server License** screen.

You can also copy (Ctrl+c) and paste (Ctrl+v) the license key in to the **License Key** field. The **License Key** field is not case-sensitive.

NOTE

If you use the SAN with SMI Agent +IP Enterprise license key, Event-based collection for IP discovery will be turned off.

If you use the SAN with SMI Agent +IP Enterprise license key, a message displays. Click **No** on the message to remain on the **Server License** screen and edit the license key. Click **Yes** to close the message and continue with [step 6](#).

6. Complete the following steps on the **FTP/SCP/SFTP Server** screen.
 - a. Choose one of the following options:
 - Select **Built-in FTP/SCP/SFTP Server** (default) to configure an internal FTP/SCP/SFTP server and select one of the following options:
 - Select **Built-in FTP Server** to configure an internal FTP server
This is the default option. The internal FTP server uses a default account and port 21. You can configure your own account from the **Options** dialog box. For instructions, refer to the *Network Advisor User Manual* or online help.
 - Select **Built-in SCP/SFTP Server** to configure an internal SCP/SFTP server
The internal SCP/SFTP server uses a default account and port 22. You can configure your own account from the **Options** dialog box. For instructions, refer to the *Network Advisor User Manual* or online help.
 - Select **External FTP/SCP/SFTP Server** to configure an external FTP server.
You can configure the external FTP server settings from the **Options** dialog box. For instructions, refer to the *Network Advisor User Manual* or online help.
 - b. Click **Next**.

If port 21 or 22 is busy, a message displays. Click **OK** to close the message and continue. Once the Management application is configured make sure port 21 or 22 is free and restart the Server to start the FTP/SCP/SFTP service.

NOTE

If you use an FTP/SCP/SFTP server that is not configured on the same machine as the Management application, the Firmware Repository feature will not be available.

7. Configure the database password on the **Database Administrator Password (dcmadmin)** screen by completing the following steps.
 - a. Choose one of the following options:
 - To use the default password, select **Default password**.
This is the default option. The default is password.
 - To configure a new password, select **New password** and enter a new password in the **Password** and **Confirm Password** fields.
The password must be between 8 and 15 alphanumeric characters. Special characters except single quote (') are allowed.
 - b. Click **Next**.

8. Complete the following steps on the **Server IP Configuration** screen.

NOTE

If the Management server or client has multiple Network Interface Cards and if any of these interfaces are not plugged in, you must disable them; otherwise, the following features do not work properly:

Server impact

- Configuration wizard (does not display all IP addresses)
- Trap and Syslog auto registration
- Report content (Ipconfiguration element does not display all server IP addresses)
- Network OS configuration backup through FTP
- Trace dump through FTP

Client impact

- Options dialog box (does not display all IP addresses)
- Firmware import and download dialog box
- Firmware import for Fabric OS and Network OS products
- FTP button in Technical Support Repository dialog box
- Technical supportSave of Fabric OS, Network OS, and Host products through FTP

-
- a. Select an address from the **Server IP Configuration** list.

NOTE

For Professional software, the **Server IP Configuration** address is set to “localhost” by default. You cannot change this address.

NOTE

For SMI Agent, if the **Server IP Configuration** list contains a duplicate IP address or is empty, an error message displays and the configuration wizard closes.

NOTE

If the “hostname” contains invalid characters, the host name does not display in the list. Valid characters include alphanumeric and dash (-) characters. The IP address is selected by default.

If Domain Name System (DNS) is not configured for your network, do not select the “hostname” option from the **Server IP Configuration** list. Selecting the “hostname” option prevents clients and devices from communicating with the server.

- b. Select an address from the **Switch - Server IP Configuration Preferred Address** list.
 - Select **Any** from the **Switch - Server IP Configuration Preferred Address** list to enable switch and server communication with one of the reachable IP address present in the server. By default, **Any** option is selected.
 - or
 - Select an IP address from the **Switch - Server IP Configuration Preferred Address** list. The preferred IP address is used for switch and server communication. If the selected IP address changes, you will be unable to connect to the server. To change the IP address after configuration, refer to “[Configuring an explicit server IP address](#)” on page 40.
 - c. Click **Next**.
9. Complete the following steps on the **Server Configuration** screen ([Figure 1](#)).

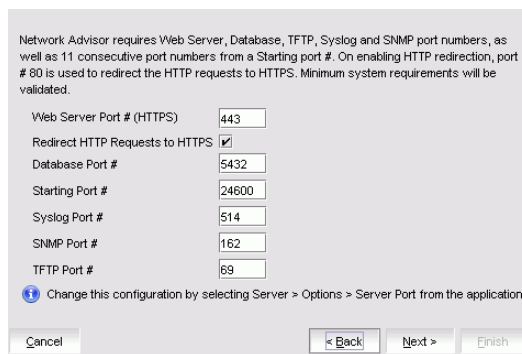


FIGURE 1 Server Configuration screen

- a. Enter a port number in the **Web Server Port # (HTTPS)** field (default is 443).
- b. Enable HTTP redirection to HTTPS by selecting the **Redirect HTTP Requests to HTTPS** check box.

When you enable HTTP redirection, the server uses port 80 to redirect HTTP requests to HTTPS. You can configure the server port settings from the **Options** dialog box (**Server Port** pane). For instructions, refer to the *Network Advisor User Manual* or online help.
- c. Enter a port number in the **Database Port #** field (default is 5432).

NOTE

Do not use a port number below 1024.

- d. Enter a port number in the **Starting Port Number** field (default is 24600). The default is 24600. If the default port is changed to some other port number, restart the server and then regenerate the client bundle running `<BNA-Install-Location>\bin\create-client-bundle.bat` file and download the client-bundle to launch the client.

NOTE

For Professional software, the server requires 11 consecutive free ports beginning with the starting port number.

NOTE

For Trial and Licensed software, the server requires 11 consecutive free ports beginning with the starting port number.

- e. Enter a port number in the **Syslog Port Number** field (default is 514).

NOTE

If the default syslog port number is already in use, you will not receive any syslog messages from the device. To find and stop the process currently running on the default Syslog port number, refer to “[Syslog troubleshooting](#)” on page 31.

- f. Enter a port number in the **SNMP Port Number** field (default is 162).
- g. Enter a port number in the **TFTP Port Number** field (default is 69).
- h. Click **Next**.

If you enter a syslog port number already in use, a message displays. Click **No** on the message to remain on the **Server Configuration** screen and edit the syslog port number. Click **Yes** to close the message.

If you enter a port number already in use, a Warning displays next to the associated port number field. Edit that port number and click **Next**.

If you are configuring Professional software, go to [step 13](#).

If you are configuring IP Enterprise, go to [step 12](#).

10. (SAN with SMI Agent + IP or SAN with SMI Agent) Complete the following steps on the **SMI Agent Configuration** screen.
 - a. Enable the SMI Agent by selecting the **Enable SMI Agent** check box.
 - b. Enable the SLP by selecting the **Enable SLP** check box, if necessary.
Only enabled after you select the **Enable SMI Agent** check box.
 - c. Enable the SSL by selecting the **Enable SSL** check box, if necessary.
Only enabled after you select the **Enable SMI Agent** check box.
 - d. Enter the SMI Agent port number in the **SMI Agent Port #** field (default is 5989 if **SSL Enabled** is selected; otherwise, the default is 5988).
 - e. Click **Next**.

11. (SAN Enterprise or SMI Agent) Select one of the following options on the **SAN Network Size** screen and click **Next**:

NOTE

Port count is equal to the total number of switch ports across all fabrics.

- **Small (managing up to 2000 switch ports, 1-20 domains)**
- **Medium (managing up to 5000 switch ports, 21-60 domains)**
- **Large (managing up to 15000 switch ports, 61-120 domains)**

If you are configuring IP Enterprise, continue with [step 12](#); otherwise, go to [step 13](#).

12. (IP Enterprise) Select one of the following options on the **IP Network Size** screen and click **Next**:

NOTE

Port count is equal to the total number of all managed product ports.

- **Small (managing up to 1-20 products)**
- **Medium (managing up to 21-200 products)**
- **Large (managing up to 201-5050 products)**

13. Enable feature usage data transfer from the application by selecting the **Yes, I want to participate** option.

If you do not want to participate in feature usage data transfer, make sure the **No, Thank You** option is selected. You can stop participating at any time. To view an example of the usage data, click **View Example Data**.

To stop participating in feature usage data transfer after configuration, refer to [“Product improvement”](#) on page 41.

14. Verify your configuration information on the **Server Configuration Summary** screen and click **Next**.

15. Complete the following steps on the **Start Server** screen.

- a. (Trial and Licensed only) Select the **Start SMI Agent** check box, if necessary.

Only enabled if you enabled SMI Agent on the **SMI Agent Configuration** screen.

- b. (Trial and Licensed only) Select the **Start SLP** check box, if necessary.

Only enabled if you enabled SLP on the **SMI Agent Configuration** screen.

- c. Select the **Start Client** check box, if necessary.

Only displays if you selected SAN with SMI Agent + IP or SAN with SMI Agent on the **Package** screen.

- d. Click **Finish**.

After all of the services are started, the **Log In** dialog box displays.

To make changes to the configuration, you can re-launch the configuration wizard (refer to [“Configuring an explicit server IP address”](#) on page 40).

16. Enter your user name and password.

The defaults are Administrator and password, respectively.

NOTE

Do not enter Domain\User_Name in the **User ID** field for LDAP server authentication.

17. Click **Login**.
18. Click **OK** on the **Network Advisor Login Banner**.

Accessing the Network Advisor interfaces

Use the following procedures to access Network Advisor from the server and client as well as to access the Server Management Console and the SMI Agent Configuration Tool.

Logging into a server

You must log into a server to monitor your network.

NOTE

You must have an established user account on the server to log in.

1. Double-click the desktop icon or open the application from the **Start** menu.
The **Log In** dialog box displays.
2. Log into another server by entering the IP address to the other server in the **Network Address** field.

NOTE

The server must be the exact same version, edition, starting port number, and network size as the client.

NOTE

You can remove a server from the **Network Address** list by selecting the IP address and clicking **Delete**.

3. Enter your user name and password.
The defaults are Administrator and password, respectively.

NOTE

Do not enter Domain\User_Name in the **User ID** field for LDAP server authentication.

4. Select or clear the **Save password** check box to choose whether you want the application to remember your password the next time you log in.
5. Click **Login**.
6. Click **OK** on the **Login Banner** dialog box.
The Network Advisor application displays.

Launching a remote client

The remote client link in the **Start** menu does not automatically upgrade when you upgrade the Management application. You must clear the previous version from the Java cache. To clear the previous version, refer to “[Clearing previous versions of the remote client](#)” on page 26.

The remote client requires Oracle JRE. For the current supported JRE version for Network Advisor, refer to the Release Notes. For the website listing patch information, go to <http://www.oracle.com/technetwork/java/javase/downloads/index.html>.

NOTE

For higher performance, use a 64-bit JRE.

1. Choose one of the following options:

- Open a web browser and enter the IP address of the Network Advisor server in the **Address** bar.

If the web server port number does not use the default (443 if is SSL Enabled; otherwise, the default is 80), you must enter the web server port number in addition to the IP address. For example, *IP_Address:Port_Number*.

If this is the first time you are accessing this version of Network Advisor, this creates a start menu shortcut automatically in Network Advisor program directory.

For Linux systems, remote client shortcuts are not created.

- Select Network Advisor (*Server_IP_Address*) in the Network Advisor directory from the start menu.

The Network Advisor web client login page displays.

2. Click **Desktop Client**.

The Network Advisor web start page displays.

3. Click the Network Advisor web start link.

The **Log In** dialog box displays.

4. Log into another server by entering the IP address to the other server in the **Network Address** field.

NOTE

The server must be the exact same version, edition, starting port number, and network size as the client.

NOTE

You can remove a server from the **Network Address** list by selected the IP address and clicking **Delete**.

5. Enter your user name and password.

The defaults are Administrator and password, respectively.

NOTE

Do not enter Domain\User_Name in the **User ID** field for LDAP server authentication.

6. Select or clear the **Save password** check box to choose whether you want the application to remember your password the next time you log in.
7. Click **Login**.
8. Click **OK** on the **Login Banner** dialog box.
The Network Advisor application displays.

Clearing previous versions of the remote client

The remote client link in the **Start** menu does not automatically upgrade when you upgrade the Management application. You must clear the previous version from the Java cache.

To clear the Java cache, complete the following steps.

1. Select **Start > Settings > Control Panel > Java**.

The **Java Control Panel** dialog box displays.

2. Click **View** on the **General** tab.

The **Java Cache Viewer** dialog box displays.

3. Right-click the application and select **Delete**.
4. Click **Close** on the **Java Cache Viewer** dialog box.
5. Click **OK** on the **Java Control Panel** dialog box.

To create a remote client link in the **Start** menu, refer to [“Launching a remote client”](#) on page 25.

Launching the SMC on Windows

Open the **Server Management Console** from the **Start** menu on the Network Advisor server.

You can also drag the SMC icon onto your desktop as a short cut.

Launching the SMC on Linux

NOTE

The Server Management Console is a graphical user interface and should be launched from the XConsole on Linux systems.

Double-click the SMC icon on your desktop.

OR

1. On the Network Advisor server, go to the following directory:

Install_Directory/bin

2. Type the following at the command line:

```
./smc  
OR  
sh smc
```


Launching the SMIA Configuration Tool

1. Launch the **Server Management Console** from the **Start** menu.
2. Click **Configure SMI Agent**.
The **SMIA Configuration Tool Log In** dialog box displays.
3. Enter your user name and password.
The defaults are Administrator and password, respectively.
4. Click **Login**.

Launching the SMIA Configuration Tool remote client

The remote client link in the **Start** menu does not automatically upgrade when you upgrade the Management application. You must clear the previous version from the Java cache. To clear the previous version, refer to “[Clearing previous versions of the remote client](#)” on page 26.

The remote client requires Oracle JRE. For the current supported JRE version for Network Advisor, refer to the Release Notes. For the website listing patch information, go to <http://www.oracle.com/technetwork/java/javase/downloads/index.html>.

1. Choose one of the following options:

- Open a web browser and enter the IP address of the Network Advisor server in the **Address** bar.

If the web server port number does not use the default (443 if is SSL Enabled; otherwise, the default is 80), you must enter the web server port number in addition to the IP address. For example, *IP_Address:Port_Number*.

If this is the first time you are accessing this version of Network Advisor, this creates a start menu shortcut automatically in Network Advisor program directory.

For Linux systems, remote client shortcuts are not created.

- Select Network Advisor (*Server_IP_Address*) in the Network Advisor directory from the start menu.

The Network Advisor web client login page displays.

2. Click **Desktop Client**.

The Network Advisor web start page displays.

3. Click the SMIA Configuration Tool web start link.

The **SMIA Configuration Tool Log In** dialog box displays.

4. Enter your user name and password.

The defaults are Administrator and password, respectively.

5. Select or clear the **Save password** check box to choose whether you want the application to remember your password the next time you log in.

6. Click **Login**.

The **SMIA Configuration Tool** displays.

Performance collection for SMI-A only

For SMI-A only installations, you can use the following procedures to configure performance collection using scripts.

Enabling or disabling performance statistics collection

To enable or disable performance statistics collection, complete the following steps.

- On Windows systems, complete the following steps.
 - a. Open a command prompt and navigate to the *Install_Home\utilities* directory.
 - b. Enable performance statistics collection by typing `sanperformancestatseable.bat dbusername dbpassword enable` and pressing **Enter**.

For example, `sanperformancestatseable.bat dcmadmin passw0rd enable`.

Disable performance statistics collection by typing `sanperformancestatseable.bat dbusername dbpassword disable` and pressing **Enter**.
- On UNIX systems, complete the following steps.
 - a. Open a terminal and navigate to the *Install_Home\utilities* directory.
 - b. Enable performance statistics collection by typing `sanperformancestatseable dbusername dbpassword enable|disable` and pressing **Enter**.

For example, `sanperformancestatseable dcmadmin passw0rd enable`.

Disable performance statistics collection by typing `sanperformancestatseable dbusername dbpassword disable` and pressing **Enter**.

Updating system threshold data

To configure the SMI-A only installation to update the file system threshold data in the system property table, complete the following steps.

- On Windows systems, complete the following steps.
 - a. Open a command prompt and navigate to the *Install_Home\utilities* directory.
 - b. Update file system threshold data by typing `updatethresholddata.bat dbusername dbpassword THRESHOLD_WARN THRESHOLD_RISK THRESHOLD` and pressing **Enter**.

For example, `updatethresholddata.bat dcmadmin passw0rd 80 90 95`.
- On UNIX systems, complete the following steps.
 - a. Open a terminal and navigate to the *Install_Home\utilities* directory.
 - b. Update file system threshold data by typing `updatethresholddata dbusername dbpassword THRESHOLD_WARN THRESHOLD_RISK THRESHOLD` and pressing **Enter**.

Exporting configuration data

To export configuration data from the `CFG_backup_archive` table, complete the following steps.

- On Windows systems, complete the following steps.
 - a. Open a command prompt and navigate to the `Install_Home\utilities` directory.
 - b. Export configuration data by typing `exportconfigdata.bat dbusername dbpassword` and pressing **Enter**.
For example, `exportconfigdata.bat dcmadmin passw0rd`.
- On UNIX systems, complete the following steps.
 - a. Open a terminal and navigate to the `Install_Home\utilities` directory.
 - b. Export configuration data by typing `exportconfigdata dbusername dbpassword` and pressing **Enter**.
For example, `exportconfigdata dcmadmin passw0rd`.

Clearing performance data

To clear performance data (all time series child table data), complete the following steps.

- On Windows systems, complete the following steps.
 - a. Open a command prompt and navigate to the `Install_Home\utilities` directory.
 - b. Clear performance data by typing `clear-performance-data.bat dbusername dbpassword` and pressing **Enter**.
For example, `clear-performance-data.bat dcmadmin passw0rd`.
- On UNIX systems, complete the following steps.
 - a. Open a terminal and navigate to the `Install_Home\utilities` directory.
 - b. Clear performance data by typing `clear-performance-data dbusername dbpassword` and pressing **Enter**.
For example, `clear-performance-data dcmadmin passw0rd`.

Syslog troubleshooting

If the default syslog port number is already in use, you will not receive any syslog messages from the device. Use one of the following procedures (depending on your operating system), to determine which process is running on the syslog port and to stop the process.

Finding the process

1. Open a command window.
2. Choose one of the following options:
 - On Linux systems, type `netstat -nap | grep 514` and press **Enter**.
The process running on port 514 displays.
Example output: `UDP 0 0 ::ffff:127:0:0:1:514 :::* 27397.`
 - On Windows systems, type `netstat -anb | find /i "514"` and press **Enter**.
The process running on port 514 displays.
Example output: `UDP 127:0:0:1:514 *:* 3328.`

Stopping the process

Choose one of the following options:

- On Linux systems, type `kill -9 "ProcessID"`, where ProcessID is the ID of the process you want to stop, and press **Enter**.
For example, `kill -9 "27397"`.
- On Windows systems, type `taskkill /F /PID "ProcessID"`, where ProcessID is the ID of the process you want to stop, and press **Enter**.
For example, `taskkill /F /PID "3328"`.

OR

1. Select **Ctrl + Shift + Esc** to open Windows Task Manager.
2. Click the **Processes** tab.
3. Click the **PID** column header to sort the processes by PID.
4. Select the process you want to stop and click **End Process**.

Installing the ODBC driver

You must have the Open Database Connectivity (ODBC) driver to allow remote clients to export data and generate reports. The ODBC driver enables you to configure the data source name (DSN) for the Network Advisor database.

Installing the ODBC driver on Windows systems

You must have the Open Database Connectivity (ODBC) driver to allow remote clients to export data and generate reports. The ODBC driver enables you to configure the data source name (DSN) for the Network Advisor database.

To install the ODBC driver, complete the following steps.

1. Right-click `psqlodbc.exe`, located on the DVD (`DVD_Drive/Network Advisor/odbc/Windows`), and select **Run as administrator**.
2. Install the file to the usual location for your system's application files (for example, `C:\Program Files\Network Advisor ODBC Driver`) on the **Select Install Folder** screen and click **Next**.

NOTE

If you select an invalid location, the ODBC driver is installed in a different location than where the ODBC executable drivers are located.

3. On the **Ready to Install** screen, click **Next**.
4. Click **Finish** to complete the installation.

Adding the data source on Windows systems

To add the data source, complete the following steps.

1. Select **Start > Settings > Control Panel > Administrative Tools**.
2. Right-click **Data Sources (ODBC)** and select **Run as administrator**.

The **ODBC Data Source Administrator** dialog box displays. If the **ODBC Data Source Administrator** dialog box does not display, select **Start > Run**, type `%windir%\SysWOW64\odbcad32.exe`, and press **Enter**.

3. Click the **System DSN** tab.
4. Click **Add**.

The **Create a New Data Source** dialog box displays.

5. Select **PostgreSQL Unicode**.
6. Click **Finish**.

The **PostgreSQL Unicode ODBC Driver (psqlODBC) Setup** dialog box displays.

7. Enter a name for the data source in the **Datasource** field.
8. Enter the description of the Network Advisor database in the **Description** field.
9. Enter the name of the Network Advisor database in the **Database** field.
10. Select **enable** or **disable** from the **SSL Mode** list to specify whether or not to use SSL when connecting to the database.

11. Enter the IP address or host name of the Network Advisor server in the **Server** field.
12. Enter the database server port number in the **Port Number** field.
13. Enter the database user name in the **User Name** field.
14. Enter the password in the **Password** field.
15. Click **Test** to test the connection.

NOTE

You can also use the Windows ODBC Driver Manager to add the DSN for the Linux database server.

16. Click **OK** on the **Connection Test** dialog box.
17. Click **Save**.
18. Click **OK** on the **ODBC Data Source Administrator** dialog box.

Installing the ODBC driver on Linux systems

You must have the Open Database Connectivity (ODBC) driver to allow remote clients to export data and generate reports. The ODBC driver enables you to configure the data source name (DSN) for the Network Advisor database.

To install the ODBC driver, complete the following steps.

1. Execute the following command in the terminal:

```
> su
>chmod 777 psqlodbc.bin
> ./psqlodbc.bin
```

For 64-bit Linux systems, the installer file is located in DVD/BROCADE/Network Advisor/odbc/Linux_64/psqlodbc.bin.

2. On the **Setup psqIODBC** screen, click **Next**.
3. Install the file to the usual location for your system's application files (for example, /opt/PostgreSQL/psqIODBC) on the **Installation Directory** screen and click **Next**.

NOTE

If you select an invalid location, the ODBC driver is installed in a different location than where the ODBC executable drivers are located.

4. On the **Ready to Install** screen, click **Next**.
5. On the **Completing the psqIODBC Setup Wizard** screen, click **Finish** to complete the installation.

Adding the datasource on Linux systems

Before you edit the INI files, install Network Advisor (refer to “Installation” on page 1) and make sure the PostgreSQL database is up and running.

NOTE

For RedHat and Oracle Enterprise systems, the `odbc.ini` and `odbcinst.ini` files are located in `/etc`. For SUSE systems, the `odbc.ini` and `odbcinst.ini` files are located in `/etc/unixODBC`.

1. Open the `odbc.ini` file in an editor and enter the datasource information as follows:

```
[TestDB]
Description = PostgreSQL 9.4.4
Driver = /opt/PostgreSQL/psqlODBC/lib/psqlodbcw.so
Database = dcldb
Servername = 172.26.1.54
UserName = dcadmin
Password = passwOrd
Port = 5432
```

2. Save and close the `odbc.ini` file.
3. Open the `odbcinst.ini` file in a text editor and make sure that the driver path information is correct.

After you install the PostgreSQL ODBC driver, the `odbcinst.ini` should automatically update the driver path. If the driver path is not updated, add the following:

```
[psqlODBC]
Description=PostgreSQL ODBC driver
Driver=/opt/PostgreSQL/psqlODBC/lib/psqlodbcw.so
```

4. Save and close the `odbcinst.ini` file.

Testing the connection on Linux systems

To test the connection, complete the following steps.

1. Download and install Open Office.
2. Select **File > New > Database**.
The **Database Wizard** displays.
3. On the **Select database** screen, complete the following steps.
 - a. Select the **Connect to an existing database** option.
 - b. Select **ODBC** from the list.
 - c. Click **Next**.
4. On the **Set up ODBC connection** screen, complete the following steps.
 - a. Click **Browse**.
The datasource saved in the `odbc.ini` file is populated in the **Datasource** dialog box.
 - b. Select the datasource and click **OK** on the **Datasource** dialog box.
 - c. Click **Next**.

5. On the **Set up user authentication** screen, complete the following steps.

- a. Enter the database user name in the **User name** field.
- b. Select the **Password required** check box.
- c. Click **Test Connection** to test the connection.

The **Authentication Password** dialog box displays.

- d. Enter the database password in the **Password** field and click **OK**.
- e. Click **OK** on the **Connection Test** dialog box.

For 64-bit Linux systems, if an error message (cannot open library) displays, complete the following steps:

1. Execute the following command:

```
export
LD_LIBRARY_PATH=/opt/PostgreSQL/8.4/lib/:/usr/lib64/:/opt/PostgreSQL/p
sqlODBC/lib/:$LD_LIBRARY_PATH
```

5. Navigate to the Postgres ODBC library (default location is `opt/PostgreSQL/psqlODBC/lib/`).

6. Create a list of missing libraries by executing the following command:

```
ldd psqlodbcw.so
Missing files display as: libodbc.so.1=> not found
```

7. Find shared libraries with the same name as the missing library by executing the following command:

```
find -name libodbc.so*
```

8. Create a soft link for `libodbc.so.1` pointing to `libodbc.so.2.0.0` by executing the following command:

```
ln -s libodbc.so.1 libodbc.so.2.0.0
```

- f. Click **Next**.

2. On the **Save and proceed** screen, click **Finish**.

Smart Card driver installation

Windows operating systems do not require smart card drivers to be installed separately; the driver is bundled with the operating system. However, you must install a smart card driver for the Linux operating systems. You must install both the special USB Chip/Smart Card Interface Device (USB CCID) and the PC/SC IFD driver. You can download the source code and compile it from one of the following websites:

- USB CCID (ccid-1.3.7.tar.bz2)
Open Source URL: <http://pcsc-lite.alieth.debian.org/ccid.html>.
- Muscle PC/SC IFD Driver (pcsc-lite-1.4.101.tar.gz)
Open Source URL: https://alieth.debian.org/frs/?group_id=30105.

The Encryption Manager Client within Network Advisor provides the binary code on both platforms for installation. You must uncompress or untar the file depending on the platform. The procedures for the local client and the remote client configurations follow. The `thirdparty/pcsc-lite-1.4.101-linux-x86.tar.gz` file can be found on the Network Advisor DVD.

Installing the Smart Card driver on the local client

1. Verify that the `/opt` directory exists.

If the `/opt` directory does not exist, create an `/opt` directory. If you want to install the driver in a different directory, create that directory. Otherwise, skip this step.

```
> su
> mkdir /opt
```

2. Copy the appropriate `pcsc` file for your platform (Linux) from the DVD and rename the file as `pcsc-lite-1.4.101-linux-x86.tar.gz` file.
3. Log in as the superuser to untar the `pcsc-lite-1.4.101-linux-x86.tar.gz` file.

```
> su
> cd /opt
> gunzip pcsc-lite-1.4.101-linux-x86.tar.gz
> tar -xvf pcsc-lite-1.4.101-linux-x86.tar
```

After the `pcsc_lite_1.4.101.tar` file is extracted, the necessary binary, library, and smart card drivers are stored in the `/opt/pcsc` directory.

4. If you installed a `pcsc` directory into a location other than `/opt`, modify the `pcscctl` script to change `"/opt"` to the directory you specified in [step 1](#).

```
> cd <new_dir>
> vi pcscctl
```

Search for `"/opt"` and change it to the name of the new directory.

5. Create a soft link into the system directory. This is to support the automatic restart of the pcscd daemon upon system restart.

If you installed the pcsc directory into the /opt directory, just create the soft link. Otherwise, use the name of the new directory in place of /opt.

```
S.u.s.e> ln -s /opt/pcsc/pcscctl /etc/init.d/pcscd
S.u.s.e> chkconfig --add pcscd
```

or

```
redhat> ln -s /opt/pcsc/pcscctl /etc/init.d/pcscd
redhat> chkconfig --add pcscd
```

NOTE

Before you enter `chkconfig --add pcscd`, you can enter `chkconfig -list | grep pcscd` to verify that the pcscd file is already on the list. If it already exists, you do not need to enter `chkconfig --add pcscd`. After you reboot the system, you should expect the following links under /etc/rc2.d, /etc/rc3.d, /etc/rc3.d, /etc/rc4.d, and /etc/rc5.d.

```
lrwxrwxrwx 1 root root 15 Jul 28 01:50 S94pcscd -> ../init.d/pcscd
```

NOTE

For some Linux vendors, the Smart Card driver may come with the operating system. In this case, extra system configuration may be needed. For more information, refer to [“Detecting and correcting a default Linux Smart Card driver”](#) on page 38.

6. Start the pcscd daemon or stop the pcscd daemon.

To start pcscd, type:

```
> /opt/pcsc/pcscctl start
```

To stop pcscd, type:

```
> /opt/pcsc/pcscctl stop
```

Installing the Smart Card driver on the remote client

1. Complete steps 1 through 4 in “Installing the Smart Card driver on the local client” on page 36.
2. Run the following commands to support remote clients (Web Start).

```
> cd /usr/lib
> ln -s /opt/pcsc/lib/libpcsclite.so .
```

NOTE

If a soft link exists on libpcsclite.so, make sure that the final file is linked to /opt/pcsc/lib/libpcsclite.so.xxx. It is recommended that you back up the original.

Example

```
> ls -l libpcsc*
lrwxrwxrwx 1 root root 20 Aug 4 16:16 libpcsclite.so ->
libpcsclite.so.1.0.0
lrwxrwxrwx 1 root root 20 Jun 4 12:30 libpcsclite.so.1 ->
libpcsclite.so.1.0.0
lrwxrwxrwx 1 root root 34 Aug 5 14:36 libpcsclite.so.1.0.0

> mv libpcsclite.so.1.0.0 libpcsclite.so.1.0.0.org
> ln -s /opt/pcsc/lib/libpcsclite.so.1.0.0 libpcsclite.so.1.0.0

> ls -l libpcsc*
lrwxrwxrwx 1 root root 20 Aug 4 16:16 libpcsclite.so ->
libpcsclite.so.1.0.0
lrwxrwxrwx 1 root root 20 Jun 4 12:30 libpcsclite.so.1 ->
libpcsclite.so.1.0.0
lrwxrwxrwx 1 root root 34 Aug 5 14:36 libpcsclite.so.1.0.0 ->
/opt/pcsc/lib/libpcsclite.so.1.0.0
-rwxr-xr-x 1 root root 35428 Aug 4 16:17 libpcsclite.so.1.0.0.org
```

Detecting and correcting a default Linux Smart Card driver

This section applies to the Linux system only. Some Linux systems may provide a default Smart Card driver and have their own setup to activate it. In this case, you must use the driver provided with Network Advisor. Otherwise, there could be an incompatibility issue between the driver and the native library that could cause a driver detection failure. Complete the following steps to discover whether a default driver already exists and how to reconfigure the driver environment.

1. Detect a different Smart Card driver by running the following commands:

```
> cd /
> find . -name pcscd -print
```

If the results contain “pcscd”, and it is not located under /opt/pcsc or /etc/init.d/pcscd, a different driver exists on the system.

2. Make sure the pcscd file on the /etc/init.d directory is linked to /opt/pcsc/pcscctl by running the following commands:

```
> cd /etc/init.d
> ls -l pcscd
lrwxrwxrwx 1 root root 17 Jul 28 01:29 pcscd -> /opt/pcsc/pcscctl
```

3. If there is an existing pcscd script in this directory, you can move and rename this file before you overwrite it.

```
> mv /etc/init.d/pcscd /etc/init.d/pcscd.org
```

4. Create a soft link using the following command.

```
> ln -s /opt/pcsc/pcscctl /etc/init.d/pcscd
```

The existing pcscd.org script in this directory implies that a different driver version exists. You can compare the existing one with the one under /opt/pcsc/pcscd/sbin. If the size is different and the existing pcscd script contains the following information, you must clean up the driver configuration. The example below shows a different pcscd.org script and how to do the configuration cleanup. The configuration level is 2345, the start priority is 25, and the stop priority is 88.

```
> more /etc/init.d/pcscd

#!/bin/sh
#
# pcscd          Starts the pcscd Daemon
#
# chkconfig:    2345    25  88
```

5. Remove the existing pcscd start priority file by deleting the file as SNNpcscd, where NN is the start priority. For example, from the preceding step, the file name is S25pcscd.

```
> find /etc/. -name "S25pcscd" -exec rm {} \; -print
> sync;sync;sync
> reboot
```

After the reboot, the new configuration from the /opt/pcsc/pcscctl file should be under the /etc/rc2.d, /etc/rc3.d, /etc/rc4.d, and /etc/rc5.d directories.

```
lrwxrwxrwx 1 root root 15 Jul 28 01:50 S94pcscd -> ../init.d/pcscd
```

6. For the remote client, ensure that the Smart Card native library is linked to the one under /opt/pcsc/lib.

```
> cd /
> find . -name libpcsclite.so* -print
```

If the library libpcsclite.so* exists in multiple locations, you must ensure that there is only one library under /lib or /usr/lib, and that it is linked to the library on /opt/pcsc/lib correctly. For example, to find a copy of the library on /lib, use the following commands.

```
> cd /lib
> ls -al libpcsclite.so
```

If a copy of the library exists, either remove it or save it as a backup.

To find a copy of the library on /usr/lib, use the following commands.

```
> cd /usr/lib
> ls -al libpcsclite.so
```

Use this copy for the soft link.

```
> ln -s /opt/pcsc/lib/libpcsclite.so /usr/lib/.
```

Configuring an explicit server IP address

If you selected a specific IP address from the **Server IP Configuration** screen during installation and the selected IP address changes, you will not be able to connect to the server. To connect to the new IP address, you must manually update the IP address information.

To change the IP address, complete the following steps.

1. Choose one of the following options:
 - On Windows systems, select **Start > Programs > Network Advisor 12.4.0 > Network Advisor Configuration**.
 - On UNIX systems, execute `sh Install_Home/bin/configwizard` in terminal.
2. Click **Next** on the **Welcome** screen.
3. Click **Yes** on the confirmation message.
4. Click **Next** on the **FTP Server** screen.
5. Complete the following steps on the **Server IP Configuration** screen.
 - a. Select an address from the **Server IP Configuration** list.

NOTE

The host name does not display in the list if it contains invalid characters. Valid characters include alphanumeric and dash (-) characters. The IP address is selected by default.

If DNS is not configured for your network, do not select the “hostname” option from the **Server IP Configuration** list. Selecting the “hostname” option prevents clients and devices from communicating with the server.

- b. Select an IP address from the **Switch - Server IP Configuration Preferred Address** list. The preferred IP address is used for switch and server communication.

or

Select **Any** from the **Switch - Server IP Configuration Preferred Address** list to enable switch and server communication with one of the reachable IP address present in the server. By default, **Any** option is selected.

- c. Click **Next**.
6. Click **Next** on the **Server Configuration** screen.
7. (SAN with SMI Agent or SAN with SMI Agent + IP packages) Click **Next** on the **SMI Agent Configuration** screen.
8. Verify your Server Name on the **Server Configuration Summary** screen and click **Next**.
9. Click **Finish** on the **Start Server** screen.
10. Click **Yes** on the restart server confirmation message.

11. Enter your user name and password and click **Login**.

The defaults are Administrator and password, respectively.

NOTE

Do not enter Domain\User_Name in the **User ID** field for LDAP server authentication.

12. Click **OK** on the Login Banner.

Product improvement

To improve its products, Brocade is collecting usage statistics from the field. If you agree to participate in the program, the Network Advisor server will transmit data back to the secure Brocade web server (HTTPS). The Brocade web server is hosted in a Brocade network.

Brocade collects the following usage data:

- Installation details
 - The version information (such as Major, Minor, Revision, and Patch)
 - The Edition (such as Enterprise, Professional Plus, or Professional)
 - The Package (such as SAN, IP, or SAN + IP)
 - Whether SSL is enabled or not
 - Generates a unique identifier based on the MAC address
 - The operating system (such as Windows or Linux)
- User actions
 - Top level menu actions
 - Tool bar actions
 - Right-click menu actions
- Feature details
 - Feature name
 - Button identifier (such as **OK**, **Help**, or **Cancel**, and so on)

Enabling product improvement data transfer

You can enable feature usage data transfer during installation or migration. For more information, refer to “[Installation](#)” on page 1. You can also enable data transfer from the **Options** dialog box once your system is up and running.

To enable feature usage data transfer from the application, complete the following steps.

1. Select **Server > Options**.

The **Options** dialog box displays.

2. Select **Product Improvement** in the **Category** list.
3. Select the **Yes, I want to participate** option.

To view an example of the usage data, click **View Example Data**.

4. Click **OK** to save your selection and close the **Options** dialog box.

Disabling product improvement data transfer

You can disable feature usage data transfer from the **Options** dialog box once your system is up and running.

To disable feature usage data transfer from the application, complete the following steps.

1. Select **Server > Options**.
The **Options** dialog box displays.
2. Select **Product Improvement** in the **Category** list.
3. Select the **No, thank you** option.
4. Click **OK** to save your selection and close the **Options** dialog box.

Data transfer

If you agree to participate in the program, these are the actions that occur on the client and server.

1. You log in to the Network Advisor client.
The main window displays.
2. The application automatically schedules a timer.
The timer is configured with an initial delay of 5 minutes and an interval of 24 hours.
3. Once scheduled, the client triggers the scheduled data transfer.
4. The client checks the reachability of the Brocade web server for the data transfer to make sure that the client workstation has HTTP connectivity.
If the Brocade web server is reachable, the client schedules the timer.
5. The client triggers the schedule to run in 5 minutes and then every 24 hours thereafter.
6. When the scheduled timer runs, the client requests the server to transfer the usage data.
7. The server determines the availability of the data based on the following details:
 - Last transfer timestamp must be greater than 24 hours to avoid frequent data uploads.
 - Data must be available for transfer. Data availability is determined by the difference between the last data transfer and the current data.
8. The client requests a data transfer.
If data is available, the server nominates the client to transfer data. Once nominated, any further upload requests are denied.

NOTE

If the nominated client's session is ended or stuck, the session is invalidated and the state is cleared.

9. The nominated client requests the server to prepare the data.
10. The server compiles the usage data text file into a .zip file using the following naming convention: `UUID_usagedata_file_creation_timestamp`, where UUID is the unique identification of the server based on the MAC address.

11. When the file is successfully created, the client changes the state of the data transfer to “Uploading” and transmits the data.

The client transmits the data securely to the Brocade web server using the Apache HTTP Components third-party library. The client communicates with the Brocade web server using an authorization token.

12. When the transfer is complete, the client updates the Brocade web server database with the transfer status (success or failure). The client also triggers an application event with the following details: success or failure, source client IP address, and source user name.

Configuring remote client access to the database

1. Open the `pg_hba.conf` file (in the `Install_Home\data\databases\` directory).
2. To allow all IPv4 remote connections for all users, search for the following text and uncomment the second line:

```
# IPv4 remote connections (Uncomment below line to allow all IPv4 remote
users):
#host    all                all                0.0.0.0/0          md5
```

3. To allow all IPv6 remote connections for all users, search for the following text and uncomment the second line:

```
# IPv6 remote connections (Uncomment below line to allow all IPv6 remote
users):
#host    all                all                ::0/0              md5
```

4. To allow access to a specific IPv4 address, search for the following text and uncomment the second line:

```
# Uncomment below line and provide IPV4 address to allow specific IPv4 remote
user
#host    all                all                <IPV4 address>/32  md5
```

5. To allow access to a specific IPv6 address, search for the following text and uncomment the second line:

```
# Uncomment below line and provide IPV6 address to allow specific IPv6 remote
user
#host    all                all                <IPV6 address>/128  md5
```

6. Save and close the file.

2 Configuring remote client access to the database

Data Migration

In this chapter

- [Upgrading the license](#) 45
- [Supported migration paths](#) 47
- [Pre-migration requirements](#) 49
- [Migrating data](#) 54
- [Cross flavor migration](#) 61
- [Migration rollback](#) 61

Upgrading the license

The quickest and simplest method of moving from one package to another is to enter the new license information on the **Network Advisor License** dialog box. The following tables list the available upgrade paths.

TABLE 11 SAN upgrade paths

Current software release	To software release
SAN Professional	SAN Professional Plus or Licensed version SAN Enterprise Trial or Licensed version SAN + IP Professional Plus Licensed version SAN + IP Enterprise Licensed version
SAN Professional Plus Licensed version	SAN Enterprise Licensed version SAN + IP Professional Plus Licensed version SAN + IP Enterprise Licensed version
SAN Enterprise Trial	SAN Enterprise Licensed version SAN + IP Enterprise Trial or Licensed version
SAN Enterprise Licensed version	SAN + IP Enterprise Licensed version

TABLE 12 IP upgrade paths

Current software release	To software release
IP Professional	IP Base Trial or Licensed version SAN + IP Professional Plus Licensed version SAN + IP Enterprise Licensed version

3 Upgrading the license

TABLE 12 IP upgrade paths

Current software release	To software release
IP Base Trial	IP Base Licensed version SAN + IP Professional Plus Licensed version SAN + IP Enterprise Licensed version
IP Base Licensed version (lower count)	IP Base Licensed version (higher count) SAN + IP Enterprise Licensed version

TABLE 13 SAN + IP upgrade paths

Current software release	To software release
SAN + IP Professional	SAN + IP Professional Plus Licensed version SAN + IP Enterprise Trial or Licensed version
SAN + IP Professional Plus Licensed version	SAN + IP Enterprise Licensed version
SAN + IP Enterprise Trial	SAN + IP Enterprise Licensed version

1. Select **Help > License**.

The **Network Advisor License** dialog box displays.

2. Browse to the license file (.xml) and click **Update**.
3. Click **OK** on the **Network Advisor License** dialog box.
4. Click **OK** on the message.

The Client closes after updating the license successfully. Restart the Server from the Server Management Console for the changes to take effect.

5. Open the application (double-click the desktop icon or open from the **Start** menu).

The **Log In** dialog box displays.

6. Enter your user name and password.

The defaults are Administrator and password, respectively. If you migrated from a previous release, your user name and password do not change.

NOTE

Do not enter Domain\User_Name in the **User ID** field for LDAP server authentication.

7. Select or clear the **Save password** check box to choose whether you want the application to remember your password the next time you log in.
8. Click **Login**.
9. Click **OK** on the **Network Advisor Login Banner**.

Supported migration paths

NOTE

To migrate Enterprise and Professional Plus editions to a 64-bit server, refer to [“Pre-migration requirements when migrating from one server to another”](#) on page 50.

Direct migration is not supported on pre-12.3.X releases. [Table 14](#) shows the migration paths from DCFM and INM. [Table 15](#) shows the migration paths from Network Advisor 12.1.X or earlier releases.

NOTE

Network Advisor 12.4.X includes 12.4.0, 12.4.1, 12.4.2, 12.4.3, and 12.4.4.

NOTE

Network Advisor 14.0.x includes 14.0.0 and 14.0.1.

TABLE 14 DCFM and INM release migration path

Network Advisor 14.0.0	
DCFm 10.4.X	DCFm 10.4.X > Network Advisor 11.1.X > Network Advisor 12.0.X > Network Advisor 12.3.X Network Advisor 12.4.X Network Advisor 14.0.X
INM 3.3	INM 3.3.X > Network Advisor 11.0.X > Network Advisor 11.1.X > Network Advisor 12.0.X > Network Advisor 12.3.X Network Advisor 12.4.X Network Advisor 14.0.X

TABLE 15 Pre-12.1.X release migration path

Network Advisor 14.0.0	
Network Advisor 11.0.X	Network Advisor 11.0.X > Network Advisor 11.1.X > Network Advisor 12.0.X > Network Advisor 12.3.X Network Advisor 12.4.X Network Advisor 14.0.X
Network Advisor 11.1.X	Network Advisor 11.1.X > Network Advisor 12.0.X > Network Advisor 12.3.X Network Advisor 12.4.X Network Advisor 14.0.X
Network Advisor 11.2.X	Network Advisor 11.2.X > Network Advisor 12.0.X > Network Advisor 12.3.X Network Advisor 12.4.X Network Advisor 14.0.X

3 Supported migration paths

TABLE 15 Pre-12.1.X release migration path (Continued)

Network Advisor 14.0.0	
Network Advisor 11.3.x	Network Advisor 11.3.X > Network Advisor 12.0.X > network Advisor 12.1.X > Network Advisor 12.3.X Network Advisor 12.4.X Network Advisor 14.0.X
Network Advisor 12.0.x	Network Advisor 12.0.X > Network Advisor 12.1.x > Network Advisor 12.3.X Network Advisor 12.4.X Network Advisor 14.0.X
Network Advisor 12.1.x	Network Advisor 12.1.x > Network Advisor 12.3.X Network Advisor 12.4.X Network Advisor 14.0.X

Table 16 shows the direct migration paths from the Network Advisor 12.2.0 or later Professional, Trial, and Licensed versions. For the step-by-step migration procedures, refer to “[Migrating data](#)” on page 54.

NOTE

Data migration is not supported from 12.4.4 to 14.0.0.

TABLE 16 Network Advisor version migration paths

Current version	Professional version	Trial Version		Licensed Version	
		Enterprise	Professional Plus	Enterprise	Professional Plus
Network Advisor 12.4.X Professional	Yes ¹	Yes ¹	Yes ¹	Yes ¹	Yes ¹
Network Advisor 12.4.X Professional Plus Licensed	No	No	Yes ¹	Yes ¹	Yes ¹
Network Advisor 12.4.X Enterprise Trial	No	Yes ¹	No	No	Yes ¹
Network Advisor 12.4.X Enterprise Licensed	No	Yes ¹	No	No	Yes ¹
Network Advisor 14.0.X Professional ²	Yes ¹	Yes ¹	Yes ¹	Yes ¹	Yes ¹
Network Advisor 14.0.X Professional Plus Licensed ²	No	No	Yes ¹	Yes ¹	Yes ¹
Network Advisor 14.0.X Enterprise Trial ²	No	Yes ¹	No	No	Yes ¹
Network Advisor 14.0.X Enterprise Licensed ²	No	Yes ¹	No	No	Yes ¹

1. Local path migration is only supported when you partially uninstall the current version. Network path migration (whether the current version is fully installed or partially uninstalled) is always supported.

2. Network path migration and migration from partially uninstalled data are not supported due to the upgrade of major postgres version from 9.2.9 to 9.4.4.

Table 17 shows the migration paths from SMI Agent only. For the step-by-step migration procedures, refer to “[Migrating data](#)” on page 54.

TABLE 17 SMI Agent only migration paths

Current version	Professional version	Trial version	Licensed Version		SMI Agent only
		Enterprise	Professional Plus	Enterprise	
Network Advisor 14.0.1 SMI Agent only	No	No	No	No	Yes

DCFM migration paths

NOTE

Before you migrate from DCFM to Network Advisor 11.0.X, 11.1.0, 11.1.1, or 11.1.2, you must reset your DCFM password back to the default (password).

You cannot migrate directly from DCFM 10.0.X, DCFM 10.1.X, or DCFM 10.3.X to Network Advisor 14.0.1. You must first migrate to DCFM 10.4.X, then migrate to Network Advisor 11.1.X, then migrate to Network Advisor 12.0.X, then migrate to Network Advisor 12.2.X, then migrate to Network Advisor 12.3.X, then migrate to Network Advisor 12.4.X, then migrate to Network Advisor 14.0.0, and then migrate to Network Advisor 14.0.1.

To migrate from DCFM 10.0.X, DCFM 10.1.X, or DCFM 10.3.X to DCFM 10.4.X, contact your customer representative. To migrate from DCFM 10.4.X to Network Advisor 11.1.X, refer to the *Network Advisor Migration Guide* for Network Advisor 11.1.X.

INM migration paths

You cannot migrate directly from INM to Network Advisor 14.0.1. You must first migrate to Network Advisor 11.0.X, then migrate to Network Advisor 11.1.X, then migrate to Network Advisor 12.0.X, then migrate to Network Advisor 12.2.X, then migrate to Network Advisor 12.3.X, then migrate Network Advisor to 12.4.X, and then migrate to Network Advisor 14.0.1. To migrate from INM to Network Advisor 11.1.X, contact your customer representative.

EFCM and Fabric Manager migration paths

You cannot migrate directly from EFCM or Fabric Manager to Network Advisor 14.0.0. To migrate from EFCM or Fabric Manager, you must first migrate to DCFM 10.3.X, then migrate to Network Advisor 11.1.X, then migrate to Network Advisor 12.0.X, then migrate to Network Advisor 12.3.X, then migrate to Network Advisor 12.4.X, and then migrate to Network Advisor 14.0.1. For more information about migrating from EFCM or Fabric Manager to DCFM 10.3.X, contact your customer representative.

Pre-migration requirements

Before you install Network Advisor, make sure you meet the following pre-migration requirements:

- Make sure all system requirements have been met prior to installation. For specific system requirements, refer to “[System requirements](#)” on page 1.

3 Pre-migration requirements

- Check for and install the latest Java patches for your operating system. For the current supported JRE version for Network Advisor and Web Tools, refer to the Release Notes. For the website listing patch information, go to <http://www.oracle.com/technetwork/java/javase/downloads/index.html>.
- Fully back up your current Management application data on your management server.
- Close all instances of the application before migrating.
- Install Network Advisor on the same system as your current Management application.
- If you are migrating within the same release or you are migrating from Professional to Licensed software, make sure to partially uninstall (refer to “[Uninstallation](#)” on page 63) the application.
- Partial data migration is not supported from pre-12.0.0 releases. If you are migrating data from a partially uninstalled source, complete the following steps.
 1. Re-install your current Network Advisor version on the same machine and migrate the partially uninstalled data.

If your current release is pre-11.3.X, you must migrate to Network Advisor 11.3.0 or later. Refer to [Table 14](#) on page 47 for the release migration path.
 2. Install Network Advisor 12.1 (refer to “[Installation](#)” on page 1) on the same machine and migrate your data (refer to “[Migrating data](#)” on page 54).
- Make sure minimum of free space is 1.5 times the size of the BNA data folder (<Install_Home>\data) available for performing migration for the servers with large amount of Performance, Events, and Flow Vision data in the database.

Pre-migration requirements when migrating from one server to another

If you are migrating from Network Advisor 14.0.0 on a 64-bit Windows server1 to Network Advisor 14.0.1 on a 64-bit Windows server2, complete the following steps.

1. Back up the server for 14.0.0 using **Options > Server Backup** on the 64-bit Windows server1.
2. Install Network Advisor 14.0.0 on the 64-bit Windows server2.
3. Select **SMC > Restore** to restore the backup on the 64-bit Windows server1.
4. Install Network Advisor 14.0.1 on the 64-bit Windows server2.

Perform seamless migration to Network Advisor 14.0.1 (refer to “[Migrating data](#)” on page 54).

If you are migrating from a pre-12.3.X release on a 64-bit Windows server1 to Network Advisor 14.0.1 on a 64-bit Windows server2, complete the following steps.

1. Install and migrate to Network Advisor 14.0.0 in the same machine (refer to “[Supported migration paths](#)” on page 47).
2. Back up the server using **Options > Server Backup** on the 64-bit Windows server1.
3. Install the same version (14.0.0) on the 64-bit Windows server2.
4. Select **SMC > Restore** to restore the backup on the 64-bit Windows server1.
5. Install Network Advisor 14.0.1 on the 64-bit Windows server2.

Perform seamless migration to Network Advisor 14.0.1 (refer to “[Migrating data](#)” on page 54).

If you are migrating from Network Advisor 14.0.0 on a 64-bit Linux server1 to Network Advisor 14.0.1 on a 64-bit pure Linux server2, complete the following steps.

1. Back up the server for 14.0.0 using **Options > Server Backup** on the 64-bit Linux server1.
2. Install the same version (14.0.0) on the 64-bit pure Linux server2.
3. Select **SMC > Restore** to restore the backup on the 64-bit Linux server1.
4. Install Network Advisor 14.0.1 on the 64-bit pure Linux server2.

Perform seamless migration to Network Advisor 14.0.1 (refer to [“Migrating data”](#) on page 54).

If you are migrating from a pre-12.3.X release on a 64-bit Linux server1 to Network Advisor 14.0.1 on a 64-bit pure Linux server2, complete the following steps.

1. Install and migrate to Network Advisor 14.0.0 on the 64-bit Linux server1 (refer to [“Supported migration paths”](#) on page 47).
2. Back up the server using **Options > Server Backup** on the 64-bit Linux server1.
3. Install the same version (14.0.0) on the 64-bit pure Linux server2.
4. Select **SMC > Restore** to restore the backup on the 64-bit Linux server1.
5. Install Network Advisor 14.0.1 on the 64-bit pure Linux server2.

Perform seamless migration to Network Advisor 14.0.1 (refer to [“Migrating data”](#) on page 54).

If you are migrating from Network Advisor 12.3.X or 12.4.X on a 64-bit Linux server1 to Network Advisor 14.0.1 on a 64-bit Linux server2, complete the following steps.

1. Back up the server for Network Advisor 14.0.0 using **Options > Server Backup** on the 64-bit Linux server1.
2. Install Network Advisor 14.0.0 on the 64-bit Linux server2.
3. Select **SMC > Restore** to restore the backup on the 64-bit Linux server1.
4. Install Network Advisor 14.0.1 on the 64-bit Linux server2.

Perform seamless migration to Network Advisor 14.0.1 (refer to [“Migrating data”](#) on page 54).

If you are migrating from a pre-12.3.X release on a 64-bit Linux server1 to Network Advisor 14.0.1 on a 64-bit Linux server2, complete the following steps.

1. Install and migrate to Network Advisor 14.0.0 on the 64-bit Linux server1 (refer to [“Supported migration paths”](#) on page 47).
2. Back up the server using **Options > Server Backup** on the 64-bit Linux server1.
3. Install Network Advisor 14.0.0 on the 64-bit Linux server2.
4. Select **SMC > Restore** to restore the backup on the 64-bit Linux server1.
5. Install Network Advisor 14.0.1 on the 64-bit Linux server2.

Perform seamless migration to Network Advisor 14.0.1 (refer to [“Migrating data”](#) on page 54).

If you are migrating from a pre-12.2.0 release on one server to another server, complete the following steps. Migrating using this procedure requires that the server versions are the same (64-bit to 64-bit).

NOTE

If you are migrating from a pre-11.3.0 release, you must first migrate to Network Advisor 12.0.X on the current server (refer to [Table 14](#) on page 47 for the release migration path).

1. Install Network Advisor 14.0.0 on your new machine (refer to “[Installation](#)” on page 1) and migrate your data (“[Migrating data](#)” on page 54) using the network path.
2. Install Network Advisor 14.0.1 on your new machine (refer to “[Data Migration](#)” on page 45) and migrate your data (“[Migrating data](#)” on page 54).

If you are migrating from a Network Advisor 12.4.X release on a 64-bit server1 to Network Advisor 14.0.1 on a 64-bit server2, complete the following steps.

1. Back up the Network Advisor 14.0.0 server data on your current 64-bit machine. For instructions, refer to “Configuring backup” in the *Brocade Network Advisor User Manual* or online help.
2. Install Network Advisor 14.0.1 on your new 64-bit machine (refer to “[Installation](#)” on page 1).
3. Restore the server backup from your original 64-bit machine. For instructions, refer to “Restoring data” in the *Brocade Network Advisor User Manual* or online help.
4. Install Network Advisor 14.0.1 on the 64-bit Windows server (refer to “[Data Migration](#)” on page 45) and migrate your data (“[Migrating data](#)” on page 54).

If you are migrating from a Windows server that is no longer supported to a supported Windows server, complete the following steps. For a list of supported operating system servers, refer to [Table 5](#) on page 2.

NOTE

If you are migrating from a pre-12.0.X release, you must first migrate to Network Advisor 12.0.X on your current server (refer to [Table 14](#) on page 47 for the release migration path).

1. Install Network Advisor 14.0.0 on your current machine (refer to “[Installation](#)” on page 1) and migrate your data (“[Migrating data](#)” on page 54).
2. Install Network Advisor 14.0.1 on your new machine (refer to “[Data Migration](#)” on page 45) and migrate your data (“[Migrating data](#)” on page 54).

If you are migrating from a Linux server that is no longer supported to a supported Linux server, complete the following steps. For a list of supported operating system servers, refer to [Table 5](#) on page 2.

NOTE

If you are migrating from a pre-12.0.X release, you must first migrate to Network Advisor 12.0.X on your current server (refer to [Table 14](#) on page 47 for the release migration path).

1. Install Network Advisor 14.0.0 on your current machine (refer to “[Installation](#)” on page 1) and migrate your data (“[Migrating data](#)” on page 54).
2. Back up the server data on your current machine. For instructions, refer to “Configuring backup” in the *Brocade Network Advisor User Manual* or online help.
3. Install Network Advisor 14.0.0 on the supported server (refer to “[Data Migration](#)” on page 45).
4. Restore the server backup from your original server. For instructions, refer to “Restoring data” in the *Brocade Network Advisor User Manual* or online help.

5. Install Network Advisor 14.0.1 on your new machine (refer to “Data Migration” on page 45) and migrate your data (“Migrating data” on page 54).

Cross-OS migration is not supported; however, you can restore a Windows OS backup to a Linux OS and vice versa. If you are migrating from one OS to another, complete the following steps.

NOTE

If you are migrating from a pre-12.0.X release, you must first migrate to Network Advisor 12.2.X on your current server (refer to Table 14 on page 47 for the release migration path).

1. Install Network Advisor 14.0.0 (refer to “Installation” on page 1) on the current machine and migrate your data (refer to “Migrating data” on page 54).
2. Back up the server data on your current machine. For instructions, refer to “Configuring backup” in the *Brocade Network Advisor User Manual* or online help.
3. Install Network Advisor 14.0.1 (refer to “Installation” on page 1) on the new machine.
4. Restore the server backup from your original machine. For instructions, refer to “Restoring data” in the *Brocade Network Advisor User Manual* or online help.

Additional pre-migration requirements on UNIX systems

- Make sure that the current application services are running.
1. Go to Install_Home/bin.
 3. Execute `./smc` or `sh smc`.
 4. Click the **Services** tab.
The tab lists the DCFM services.
 5. Click **Start**, if necessary.
- Make sure that an X Server is available for display and is configured to permit X Client applications to display from the host on which they are installing the Network Advisor Server (typically, this simply requires that the systems console be present and running with a logged-in user on the X Server-based desktop session, such as KDE, GNOME, and so on).
 - Make sure that the DISPLAY environment variable is correctly defined in the shell with a valid value (for example, to display to the local console, **export DISPLAY=:0.0**, or to display to a remote system that has an X Server running, **export DISPLAY=Remote_IP_Address:0.0**).
You may also need to consider a firewall that might block the display to the X Server which listens by default on TCP port 6000 on the remote host.
To display to a remote system you need to permit the remote display of the X Server by running command **xhost +IP**, where IP is the IP address of the Network Advisor server host from the X-based desktop of the remote system.
- Make sure you test the DISPLAY definition by running the command **xterm** from the same shell from which you run `install.bin`. A new X terminal window to the destination X Server display should open.

Additional trial requirements

- Two versions of the Management application (DCFM, INM, or Network Advisor) cannot reside on the same host unless there are two guest operating systems on the same host.
- Data collected during the Trial cannot be migrated back to the Professional software.
- Once the Enterprise trial period expires, you must upgrade to Licensed software.

Migrating data

The quickest and simplest method of moving from one package to another is to enter the new license information on the **Network Advisor License** dialog box. To upgrade from a previous release, refer to [“Upgrading the license”](#) on page 45. If you have not installed the application, refer to [“Installation”](#) on page 1.

NOTE

If an error occurs while migrating from version 14.0.0 or earlier to version 14.0.1, it rolls back to the earlier version. Migration rollback is not supported if you are performing headless migration.

NOTE

Trial to Professional software migration is not supported.

NOTE

Licensed software to Trial software migration is not supported.

NOTE

Enterprise software to Professional Plus software migration is not supported.

To migrate data from a previous version, complete the following steps.

1. Click **Next** on the **Welcome** screen.
2. Choose one of the following options:
 - If data is detected on your system, the **Copy Data and Settings from previous releases** screen displays. To migrate data from the previous version installed (automatically detected), select **Yes, from the following location**. Continue with [step 3](#).
 - If data is not detected, the **Copy Data and Settings from previous releases** screen displays. Complete the following steps:
 - a. Select **Yes, from this machine or on network** and click **Browse** to browse to the installation directory.
 - c. Click **Next** on the **Copy Data and Settings from previous releases** screen. Continue with [step 3](#).

NOTE

If you are migrating to the same install location (as the previous version), you will need to browse to the renamed directory on the **Copy Data and Settings from previous releases** screen.

3. Click **Start** on the **Data Migration** screen.

Data migration may take several minutes. When data migration is complete, the previous version is partially uninstalled.

During data migration, Network Advisor and SMIA certificates migrating from source to destination will happen if satisfies with any of the following scenarios. A new certificate will be generated using SHA256 signature algorithm if not satisfied:

- Certificates must be generated by customers.
- Certificates must have SHA2 signature algorithm.
- Source certificate must be self-signed and has a validity of more than six months or generated using SHA256 signature algorithm.

4. Click **Next** on the **Data Migration** screen.

If you have products associated with the Brocade North America or Brocade International Call Home centers, a message displays. To map these Call Home centers to the Brocade E-mail Call Home center after migration, click **Yes**. To not map these Call Home centers, click **No**.

NOTE

Make sure you configure the Brocade E-mail Call Home center (refer to the *Brocade Network Advisor User Manual* or online help).

If you are migrating from Professional or Trial software, continue with [step 5](#).

If you are migrating from Licensed software, go to [step 6](#).

5. Select one of the following options on the **Installation Type** screen and click **Next**.

NOTE

The DCX and DCX 8510-8 Backbone chassis require Enterprise edition.

- **Network Advisor - Licensed version**

Continue with [step 6](#). Requires you to enter a license key during configuration to enable features and configuration.

- **Network Advisor - 120 days Trial**

Go to [step 7](#). Enables you to manage IP, SAN, or SAN and IP networks from a single interface for 120 days.

ATTENTION

If you choose to install Trial, once the trial period ends (120 days), you must upgrade to Licensed software.

- **Network Advisor - Professional**

Go to [step 7](#). Bundled with Fabric OS and IronWare OS devices to manage small IP or SAN networks from a single interface.

6. Choose one of the following options on the **Server License** screen:

- If you are migrating from a licensed source, the source license information displays. Click **Next**. Continue with [step 7](#).
- If you are migrating from Professional or Trial software to Licensed software, browse to the license file (.xml) and click **Next**. Continue with [step 7](#).

The **License Key** field is not case-sensitive.

3 Migrating data

NOTE

Downgrading the license from the current configuration during migration is not supported.

7. Complete the following steps on the **FTP/SCP/SFTP Server** screen.

The default selection reflects the previous edition configuration.

a. Choose one of the following options:

- Select **Built-in FTP/SCP/SFTP Server** to configure an internal FTP/SCP/SFTP server and select one of the following options:
 - Select **Built-in FTP Server** to configure an internal FTP server
The internal FTP server uses a default account and port 21. You can configure your own account from the **Options** dialog box. For instructions, refer to the *Network Advisor User Manual* or online help.
 - Select **Built-in SCP/SFTP Server** to configure an internal SCP/SFTP server
The internal SCP/SFTP server uses a default account and port 22. You can configure your own account from the **Options** dialog box. For instructions, refer to the *Network Advisor User Manual* or online help.
- Select **External FTP/SCP/SFTP Server** to configure an external FTP server.
You can configure the external FTP server settings from the **Options** dialog box. For instructions, refer to the *Network Advisor User Manual* or online help.

b. Click **Next**.

If port 21 or 22 is busy, a message displays. Click **OK** to close the message and continue. Once the Management application is configured make sure port 21 or 22 is free and restart the Server to start the FTP/SCP/SFTP service.

NOTE

If you use an FTP/SCP/SFTP Server which is not configured on the same machine as the Management application, the Firmware Repository feature will not be available.

8. Complete the following steps on the **Server IP Configuration** screen.

NOTE

If the Management server or client has multiple Network Interface Cards and if any of these interfaces are not plugged in, you must disable them; otherwise, the following features do not work properly:

Server impact

- Configuration wizard (does not display all IP addresses)
- Trap and Syslog auto registration
- Report content (Ipconfiguration element does not display all server IP addresses)
- Network OS configuration backup through FTP
- Trace dump through FTP

Client impact

- Options dialog box (does not display all IP addresses)
 - Firmware import and download dialog box
 - Firmware import for Fabric OS and Network OS products
 - FTP button in Technical Support Repository dialog box
 - Technical supportSave of Fabric OS, Network OS, and Host products through FTP
-

3 Migrating data

- a. Select an address from the **Server IP Configuration** list.

NOTE

For Professional software, the **Server IP Configuration** address is set to “localhost” by default. You cannot change this address.

NOTE

For SMI Agent, if the **Server IP Configuration** list contains a duplicate IP address or is empty, an error message displays and the configuration wizard closes.

- b. Select an address from the **Switch - Server IP Configuration Preferred Address** list.

NOTE

If the “hostname” contains invalid characters, the host name does not display in the list. Valid characters include alphanumeric and dash (-) characters. The IP address is selected by default.

If DNS is not configured for your network, do not select the ‘hostname’ option from either the **Server IP Configuration** or **Switch - Server IP Configuration Preferred Address** list. Selecting the ‘hostname’ option prevents clients and devices from communicating with the Server.

If you select a specific IP address from the **Server IP Configuration** screen and the selected IP address changes, you will not be able to connect to the server. To change the IP address, refer to [“Configuring an explicit server IP address”](#) on page 40.

- c. Click **Next**.

9. Complete the following steps on the **Server Configuration** screen.

Network Advisor requires Web Server, Database, TFTP, Syslog and SNMP port numbers, as well as 11 consecutive port numbers from a Starting port #. On enabling HTTP redirection, port # 80 is used to redirect the HTTP requests to HTTPS. Minimum system requirements will be validated.

Web Server Port # (HTTPS)	443
Redirect HTTP Requests to HTTPS	<input checked="" type="checkbox"/>
Database Port #	5432
Starting Port #	24600
Syslog Port #	514
SNMP Port #	162
TFTP Port #	69

Change this configuration by selecting Server > Options > Server Port from the application.

Cancel Back Next Finish

FIGURE 2 Server Configuration screen

- a. Enter a port number in the **Web Server Port # (HTTPS)** field (default is 443).
- b. Enable HTTP redirection to HTTPS by selecting the **Redirect HTTP Requests to HTTPS** check box.

When you enable HTTP redirection, the server uses port 80 to redirect HTTP requests to HTTPS. You can configure the server port settings from the **Options** dialog box (**Server Port** pane). For instructions, refer to the *Network Advisor User Manual* or online help.

- c. Enter a port number in the **Database Port #** field (default is 5432).

NOTE

Do not use a port number below 1024.

- d. Enter a port number in the **Starting Port #** field (default is 24600).

NOTE

For Professional software, the server requires 11 consecutive free ports beginning with the starting port number.

NOTE

For Trial and Licensed software, the server requires 11 consecutive free ports beginning with the starting port number.

- e. Enter a port number in the **Syslog Port #** field (default is 514).

NOTE

If the default syslog port number is already in use, you will not receive any syslog messages from the device. To find and stop the process currently running on the default Syslog port number, refer to "[Syslog troubleshooting](#)" on page 31.

- f. Enter a port number in the **SNMP Port #** field (default is 162).

- g. Enter a port number in the **TFTP Port #** field (default is 69).

- h. Click **Next**.

If you enter a syslog port number already in use, a message displays. Click **No** on the message to remain on the **Server Configuration** screen and edit the syslog port number. Click **Yes** to close the message and continue with [step 10](#).

If you enter a port number already in use, a warning displays next to the associated port number field. Edit that port number and click **Next**.

If you are configuring Professional software, go to [step 13](#).

10. (SAN with SMI Agent + IP or SAN with SMI Agent) Complete the following steps on the **SMI Agent Configuration** screen.

- a. Enable the SMI Agent by selecting the **Enable SMI Agent** check box.

- b. Enable the SLP by selecting the **Enable SLP** check box, if necessary.

Only enabled after you select the **Enable SMI Agent** check box.

- c. Enable the SSL by selecting the **Enable SSL** check box, if necessary.

Only enabled after you select the **Enable SMI Agent** check box.

- d. Enter the SMI Agent port number in the **SMI Agent Port #** field (default is 5989 if **SSL Enabled** is selected; otherwise, the default is 5988).

- e. Click **Next**.

11. (SAN Enterprise or SMI Agent) Select one of the following options on the **SAN Network Size** screen and click **Next**:

NOTE

Port count is equal to the total number of switch ports across all fabrics.

- **Small (managing up to 2000 switch ports, 1-20 domains)**
- **Medium (managing up to 5000 switch ports, 21-60 domains)**
- **Large (managing up to 15000 switch ports, 61-120 domains)**

If you are configuring IP Enterprise, continue with [step 12](#); otherwise, go to [step 13](#).

12. (IP Enterprise) Select one of the following options on the **IP Network Size** screen and click **Next**:

NOTE

Port count is equal to the total number of all managed product ports.

- **Small (managing up to 1-20 products)**
- **Medium (managing up to 21-200 products)**
- **Large (managing up to 201-5050 products)**

13. Enable feature usage data transfer from the application by selecting the **Yes, I want to participate** option.

You can stop participating at any time. To view an example of the usage data, click **View Example Data**.

To stop participating in feature usage data transfer after configuration, refer to [“Product improvement”](#) on page 41.

14. Verify your configuration information on the **Server Configuration Summary** screen and click **Next**.

15. Complete the following steps on the **Start Server** screen.

- a. (Trial and Licensed only) Select the **Start SMI Agent** check box, if necessary.
- b. (Trial and Licensed only) Select the **Start SLP** check box, if necessary.
- c. Select the **Start Client** check box, if necessary.
- d. Click **Finish**.

After all of the services are started, the **Log In** dialog box displays.

To make changes to the configuration, you can re-launch the configuration wizard (refer to [“Configuring an explicit server IP address”](#) on page 40).

16. Enter your user name and password.

The defaults are Administrator and password, respectively. If you migrated from a previous release, your user name and password do not change.

NOTE

Do not enter Domain\user_name in the **User ID** field for LDAP server authentication.

17. Click **Login**.
18. Click **OK** on the **Network Advisor Login Banner**.

Cross flavor migration

To migrate from Brocade Network Advisor 14.0.0 to a non-Brocade Network Advisor 14.0.1, complete the following steps.

1. Install Brocade Network Advisor 14.0.1 (refer to “Installing the application” on page 10).
2. Install non-Brocade Network Advisor 14.0.1 (refer to “Installing the application” on page 10).
3. Migrate the supported (partial or full) data from Brocade Network Advisor 14.0.1 (refer to “Migrating data” on page 54) to the Non-Brocade Network Advisor 14.0.1 by browsing to the Brocade Network Advisor 14.0.1 location on the **Copy Data and Setting** screen.

NOTE

If the Non-Brocade Network Advisor does not support SAN + IP, it is recommended that you install SAN only Brocade Network Advisor and then migrate to Non-Brocade SAN + IP Network Advisor.

Migration rollback

NOTE

Migration rollback is not supported if you are performing headless migration.

Migration rollback is triggered when a failure occurs while migrating to a different version of Brocade Network Advisor. After successful rollback, the previous version will be running and the destination version will be uninstalled. The destination version failure logs and the source version supportsave will be zipped and stored at the source BNA_HOME\support folder in the following format.

```
Zip file format, Migration_Failure_SupportSave_<Time stamp>.zip
```

Migration rollback due to insufficient space

When migration rollback fails due to insufficient space, you can either increase the disk space and try rollback or cancel the migration rollback. The destination version is uninstalled manually if you cancel the migration rollback. Use the following commands, to retrieve the source version.

For Windows

```
Install_Home>bin>dbsvc install
Install_Home>bin>dbsvc start
Install_Home>bin>service.bat dcmsvc install
Install_Home>bin>service.bat dcmsvc start
```

For Windows, if SLP is enabled

```
Install_Home>cimom>bin>slpd.bat -install
Install_Home>cimom>bin>slpd.bat -start
```

For Windows, if CIMOM is enabled

```
Install_Home>bin>service.bat cimomsvc install
Install_Home>bin>service.bat cimom svc start
```

3 Migration rollback

For Linux

```
Install_Home>bin>sh dbsvc start  
Install_Home>bin>sh service dcmsvc start
```

For Linux, if SLP is enabled

```
Install_Home>bin>sh slpsvc start
```

For Linux, if CIMOM is enabled

```
Install_Home>bin>sh service cimomsvc start
```

Migration rollback in Configuration Wizard

You can rollback to the earlier version of Network Advisor during migration by canceling the configuration using **Cancel** button.

You cannot cancel the migration while you are in the **Welcome** and **Copy and Data Settings** pages of Configuration wizard.

The warning message “Are you sure you want to cancel the configuration of Network Advisor 14.0.1?” displays, if you try to cancel the migration before the migration starts.

The warning message “Canceling the migration will initiate rollback of the changes made and will uninstall Network Advisor 14.0.1. Are you sure you want to continue?” displays, if you try to cancel the migration post the migration success.

NOTE

The supportsave will not be triggered, if you manually cancel the installation and initiate the rollback.

Click **Yes**, to quit and close the configuration wizard.

Click **No**, to stay on the same page.

Uninstallation

In this chapter

- [Uninstalling from Windows systems](#) 63
- [Uninstalling from Windows systems \(headless uninstall\)](#) 64
- [Uninstalling from UNIX systems](#) 64
- [Uninstalling from UNIX systems \(headless uninstall\)](#) 65

This section provides step-by-step instructions to uninstall Network Advisor and SMI Agent from both Windows and UNIX systems.

NOTE

Network Advisor is installed on a separate directory from your previous version; therefore, you do not need to uninstall the previous version immediately. However, you cannot run both versions simultaneously.

Uninstalling from Windows systems

Follow these instructions to uninstall the Network Advisor and SMI Agent from your Windows system.

1. Select **Start > Programs > Network Advisor 14.0.1 > Uninstall Network Advisor**.
2. Select one of the following options on the **Uninstall Option** screen:
 - **Partial Uninstall** – Configuration and performance data is retained to be re-used by the new installation. This is the default option.
 - **Full Uninstall** – All data is removed.
3. Click **Uninstall**.
4. Click **Done** on the **Uninstall Complete** screen.

Uninstalling from Windows systems (headless uninstall)

If the application was installed using the headless installation, complete the following steps to uninstall Network Advisor and SMI Agent from your Windows server.

1. Open a command prompt.
2. Choose one of the following options:
 - To partially uninstall Network Advisor (configuration and performance data is retained to be re-used by the new installation), execute `Install_Home\Uninstall_Network Advisor 14.0.1\Uninstall_Network Advisor 14.0.1.exe -f <absolute path of partial uninstall property file>`.
 - To fully uninstall Network Advisor (all data is removed), execute `Install_Home\Uninstall_Network Advisor 14.0.1\Uninstall_Network Advisor 14.0.1.exe -f <absolute path of full uninstall property file>`.

When uninstallation is complete, an “Uninstallation complete” message displays. You must manually delete the `Install_Home/silent` folder.

Uninstalling from UNIX systems

Follow these instructions to uninstall the Network Advisor and SMI Agent from your UNIX system.

NOTE

The Uninstall folder is retained.

1. Go to `Install_Home/Uninstall_Network_Advisor14_0_1`.
2. Execute `./Uninstall_Network_Advisor14_0_1`.
3. Select one of the following options on the **Uninstall Option** screen:
 - **Partial Uninstall** – Configuration and performance data is retained to be re-used by the new installation. This is the default option.
 - **Full Uninstall** – All data is removed.
4. Click **Uninstall**.
5. Click **Done** on the **Uninstall Complete** screen.

Uninstalling from UNIX systems (headless uninstall)

If the application was installed using the headless installation, complete the following steps to uninstall Network Advisor and SMI Agent from your UNIX server.

1. Go to `Install_Home/Uninstall_Network_Advisor14_0_1`.
2. Choose one of the following options:
 - To partially uninstall Network Advisor (configuration and performance data is retained to be re-used by the new installation), execute `Uninstall_Network_Advisor 14_0_1 -f <absolute path of partial uninstall property file>`.
 - To fully uninstall Network Advisor (all data is removed), execute `.\Uninstall_Network_Advisor 14_0_1 -f <absolute path of full uninstall property file>`.

When uninstallation is complete, an “Uninstallation complete” message displays. You must manually delete the `Install_Home/silent` folder.

4 Uninstalling from UNIX systems (headless uninstall)

References

In this appendix

- [Network Advisor packages](#) 67
- [Scalability limits](#) 68
- [Edition feature support](#) 69
- [Management server and client ports](#) 79

Network Advisor packages

[Table 18](#) summarizes the packages and available editions for each package.

TABLE 18 Packages and versions

Package	Editions
SAN with SMI Agent +IP	<ul style="list-style-type: none"> • Enterprise (trial and licensed) • Professional Plus (licensed) • Professional
SAN with SMI Agent	<ul style="list-style-type: none"> • Enterprise (trial and licensed) • Professional Plus (licensed) • Professional
IP	<ul style="list-style-type: none"> • Enterprise (trial and licensed) • Professional
SMI Agent	<p>NOTE: Network Advisor clients are not available in the SMI Agent only package. Clients are not required when other management tools are used the SMI Agent.</p>

For a list of the supported scalability limits for Network Advisor by edition, refer to [“Scalability limits”](#) on page 68.

Scalability limits

Table 19 summarizes the scalability limits supported for Network Advisor by edition.

TABLE 19 Supported scalability limits by Network Advisor edition

	Enterprise edition			SAN Professional Plus + IP Base edition	Professional edition
	Small	Medium	Large		
SAN Switch Ports	2000	5000	15000	2560	300
SAN Switches and Access Gateways	40	100	400	40	15
SAN Devices	5000	15000	40000	5000	1000
SAN Fabrics	25	50	100	36	2
IP Switches ¹	50	200	1550 (supported) 1200 (recommended) (with performance monitoring on up to 20000 ports)	50	50
MPLS Switches	1	10	100	1	Not supported.
VDX Switches	50	100	400	50	50
Managed Hosts	20	100	400	100	20
vCenters	1	5	10	5	1
VMs (includes powered down VMs)	1000	5000	10000	5000	1000
ESX Hosts	200	1000	2000	1000	200

1.The IP switch count includes MPLS and VDX switches.

NOTE

Virtual Fabrics are counted as fabrics when calculating the managed count limits.

NOTE

SMI Agent is not supported on Professional edition.

NOTE

Professional Plus is not supported for the IP package.

NOTE

Supported network latency between Network Advisor server and client or server and devices is 100ms.

Edition feature support

Table 20 details whether the features are supported in the Professional, Professional Plus, or Enterprise versions, or only through the Element Manager of the device.

TABLE 20 SAN features supported

Feature	Professional	Professional Plus	Enterprise
AAA (Authentication, Authorization, and Auditing) Authentication and authorization configuration	No	Yes	Yes
Access Gateway (AG) management			
AG display	Yes	Yes	Yes
Support for firmware download, supportSave, performance statistics, and configuration file management	Yes	Yes	Yes
Active session management	Yes	Yes	Yes
Bottleneck detection			
Configuration	No	Yes	Yes
Statistics	No	Yes	Yes
Badge on topology and product tree	Yes	Yes	Yes
Show affected host	No	Yes	Yes
Call Home support			
Support for all call home centers	No	Yes	Yes
SupportSave for Fabric OS switches	No	Yes	Yes
Support for appending the last 30 events in a call home event for e-mail-based call home centers	No	Yes	Yes
Certificate management	NO	Yes	Yes
COMPASS	No	Yes	Yes
Configuration management			
Configuration repository management	No	Yes	Yes
Firmware download	Yes	Yes	Yes
Manual backup	Yes	Yes	Yes
NOTE: Professional only supports one switch at a time.			
Save configuration	Yes	Yes	Yes
NOTE: Professional only supports one switch at a time.			
Periodic configuration backup and persistence	No	Yes	Yes
Replicate switch configuration	No	Yes	Yes
Dashboard	Yes	Yes	Yes
DCB configuration management	Yes	Yes	Yes
DCX backbone chassis discovery and management	No	No	Yes
Diagnostic port test	No	Yes	Yes
Digital diagnostic	Yes	Yes	Yes

A Edition feature support

TABLE 20 SAN features supported (Continued)

Feature	Professional	Professional Plus	Enterprise
Encryption			
Layer 2 FC support	Yes	Yes	Yes
Encryption configuration and monitoring	Yes	Yes	Yes
Access Gateway – Cisco interop support	Yes	Yes	Yes
Device decommissioning	Yes	Yes	Yes
End device connectivity Collection Views	Yes	Yes	Yes
Fabric binding	No	Yes	Yes
Fabric Watch			
Hardware	Element Manager	Element Manager	Element Manager
Ports	Element Manager	Element Manager	Element Manager
Admin	Element Manager	Element Manager	Element Manager
Router Admin	Element Manager	Element Manager	Element Manager
Name Server	Element Manager	Element Manager	Element Manager
Fault management			
Show switch events	Yes	Yes	Yes
Show fabric events	Yes	Yes	Yes
Syslog registration and forwarding	Yes	Yes	Yes
SNMP trap registration and forwarding	Yes	Yes	Yes
Trap configuration, credentials, and customization	Yes	Yes	Yes
Event forwarding	No	Yes	Yes
Event custom report	No	Yes	Yes
Event processing (event policies and pseudo events)	No	Yes	Yes
Common SNMP/Trap registration	Yes	Yes	Yes
FCIP management			
FCIP configuration wizard	Yes	Yes	Yes
Iperf and IP trace route	Yes	Yes	Yes
FCoE management			
FCoE configuration	Yes	Yes	Yes
Migration from DCFM	Yes	Yes	Yes
FICON/CUP			

TABLE 20 SAN features supported (Continued)

Feature	Professional	Professional Plus	Enterprise
Cascaded FICON configuration wizard	No	No	Yes
Cascaded FICON Fabric merge wizard	No	No	Yes
PDCM Matrix	Element Manager	Element Manager	Yes
Firmware management and supportSave			
Firmware download	Yes	Yes	Yes
Capture SupportSave	Yes	Yes	Yes
Flow Vision	No	Yes	Yes
Frame monitor	No	Yes	Yes
HBA management			
HBA management	Yes	Yes	Yes
VM management	Yes	Yes	Yes
Driver/DIOS management	No	Yes	Yes
Fabric assigned WWN	No	Yes	Yes
HBA Server and Storage port mapping	No	Yes	Yes
High Integrity Fabric	No	Yes	Yes
IPv6 – Server - Switch support	Yes	Yes	Yes
iSCSI discovery	Yes	Yes	Yes
Layer 2 trace route	No	Yes	Yes
License	No	Yes	Yes
MAPS management	No	Yes	Yes
Meta-SAN	No	Yes	Yes
Routing configuration			
Domain ID configuration			
Name Server	Yes	Yes	Yes
Open Trunking Support			
Display trunks on the topology	Yes	Yes	Yes
Display trunks properties	Yes	Yes	Yes
Display marching ants	Yes	Yes	Yes
Display connections properties	Yes	Yes	Yes

A Edition feature support

TABLE 20 SAN features supported (Continued)

Feature	Professional	Professional Plus	Enterprise
Performance management - SNMP monitoring			
Real Time Performance collection, display, and reports	Yes	Yes	Yes
Historical Performance collection, display, and reports	No	Yes	Yes
Thresholds	No	Yes	Yes
Top talkers - Supported on SAN switches and Access Gateway	No	Yes	Yes
Marching ants	No	Yes	Yes
Data aging	No	Yes	Yes
End-to-End monitors	No	Yes	Yes
Policy Monitor	Yes	Yes	Yes
Port Administration	Element Manager	Element Manager	Element Manager
Port Fencing	No	Yes	Yes
Port group configuration	No	No	Yes
REST API	No	Yes	Yes
Reports	Yes	Yes	Yes
Generate reports	Yes	Yes	Yes
View reports	Yes	Yes	Yes
Performance reports	Yes	Yes	Yes
FCR reports	Yes	Yes	Yes
SCOM plug-in support	No	Yes	Yes
Security management			
Replicate switch policy configuration	No	Yes	Yes
SNMP configuration	Yes	Yes	Yes
L2 ACL configuration	Yes	Yes	Yes

NOTE: Only supported on DCB devices.

TABLE 20 SAN features supported (Continued)

Feature	Professional	Professional Plus	Enterprise
SMI Agent	No	Yes	Yes
Server Profile			
Fabric Profile			
Indication Sub Profile			
Zone Control Sub Profile			
Enhanced Zoning and Enhanced Zoning Control Sub Profile			
FDMI (Fabric Device Management Interface) Sub Profile			
Fabrics Virtual Fabrics Sub Profile			
Topology View Sub Profile			
FC HBA (Fibre Channel Host Bus Adapter) Profile			
Fan, Power Supply, and Sensor Profiles			
Inter Fabric Routing (FCR) Profile			
Trunking			
CP Blade Sub Profile			
CEE (Converged Enhanced Ethernet)			
Launch In Context Profile			
Switch Profile			
Role Based Authorization (CEE ACL) Profile			
N port Virtualizer (AG NPIV) Profile			
Profile Registration Sub Profile			
Object Manager Adapter Sub Profile			
Fabric Views Sub Profile			
Physical Package Sub Profile			
Software Sub Profile			
Access Points Sub Profile			
Location Sub Profile			
Fabric Switch Partitioning Sub Profile			
FC Initiator Ports Sub Profile			
Fabric and Host discovery			
SAN Zoning			
Switch configuration management	Yes	Yes	Yes
Basic configurations through the Element Manager			
Switch port enable/disable through right-click menu	Yes	Yes	Yes
Technical SupportSave	Yes	Yes	Yes
Telnet	Yes	Yes	Yes
NOTE: Telnet through the server is only supported on Windows systems.			
Tools launcher (Setup Tools)	No	Yes	Yes
Troubleshooting and Diagnostics			
Device connectivity troubleshooting wizard	Yes	Yes	Yes
Trace route and Ping	Yes	Yes	Yes
Fabric device sharing	No	Yes	Yes
User management	No	Yes	Yes
View management	No	Yes	Yes

A Edition feature support

TABLE 20 SAN features supported (Continued)

Feature	Professional	Professional Plus	Enterprise
Virtual fabric support			
Discovery	Yes	Yes	Yes
Configuration	No	Yes	Yes
VLAN management	Yes	Yes	Yes
VM Plugin Support	No	Yes	Yes
Web Element Manager	Yes	Yes	Yes
Zoning			
Member selection	Yes	Yes	Yes
Zone editing	Yes	Yes	Yes
Live fabric library scope	Yes	Yes	Yes
QoS support	Yes	Yes	Yes
Zone alias support	Yes	Yes	Yes
Delete Zone database	No	Yes	Yes
Impact analysis	Yes	Yes	Yes
Remove offline devices	No	Yes	Yes
TI Zones	Yes	Yes	Yes
Device to Zone / zoneset participation analysis	Yes	Yes	Yes
LSAN Zones	No	Yes	Yes
Rolling back to an activated zone database	No	Yes	Yes
Import or export a zone database	No	Yes	Yes

[Table 21](#) details whether the IP features are fully or partially supported in the Professional or Licensed versions.

TABLE 21 IP features supported

Feature	Professional	Base Licensed version	Base with Licensed Ethernet Fabrics	Base with Unlicensed Ethernet Fabrics
802.1ag support (MPLS and VLAN management)	No	Yes	Yes	Yes
AAA (Authentication, Authorization, and Auditing) Authentication and authorization configuration	No	Yes	Yes	Yes
Address Finder	No	Yes	Yes	Yes
ADP management	No	Yes	Yes	Yes
AMPP (port profile)	No	Yes	Yes	No
Call Home support				
Support for all call home centers	No	Yes	Yes	Yes
Support for appending the last 30 events in a call home event for e-mail-based call home centers	No	Yes	Yes	Yes

TABLE 21 IP features supported (Continued)

Feature	Professional	Base Licensed version	Base with Licensed Ethernet Fabrics	Base with Unlicensed Ethernet Fabrics
Change management	Partial support	Yes	Yes	Yes
CLI configuration management	No	Yes	Yes	Yes
CLI Element Manager	Yes	Yes	Yes	Yes
Configuration management				
Configuration snapshot	No	Yes	Yes	Yes
Configuration repository management	Yes	Yes	Yes	Yes
Manual backup	Yes	Yes	Yes	Yes
NOTE: Professional only supports one product at a time.				
Save configuration	Yes	Yes	Yes	Yes
NOTE: Professional only supports one switch at a time.				
Save configuration for VCS-enabled switches	No	Yes	Yes	Yes
Periodic configuration backup and persistence	No	Yes	Yes	Yes
Replicate switch configuration	No	Yes	Yes	Yes
Product configuration	No	Yes	Yes	Yes
- Setting baselines				
- Search				
Change tracking	No	Yes	Yes	Yes
Configuration wizard				
Product configuration - create, edit, and deploy.	Yes	Yes	Yes	Yes
Interface payload – sFlow configuration	Yes	Yes	Yes	Yes
NOTE: Professional only supports one product at a time.				
Product Payloads:	No	Yes	Yes	Yes
- CLI configuration				
- CLI product monitoring				
Dashboard	Yes	Yes	Yes	Yes
DCB configuration management	Yes	Yes	Yes	Yes
Deployment management	Yes	Yes	Yes	Yes
Discovery				
IP discovery	Yes	Yes	Yes	Yes
VCS discovery	Yes	Yes	Yes	Yes
NOTE: Professional supports one cluster member.				
Fabric Watch				
NOTE: Only supported on DCB switches.				
Hardware	Element Manager	Element Manager	Element Manager	Element Manager
Ports	Element Manager	Element Manager	Element Manager	Element Manager

A Edition feature support

TABLE 21 IP features supported (Continued)

Feature	Professional	Base Licensed version	Base with Licensed Ethernet Fabrics	Base with Unlicensed Ethernet Fabrics
Admin	Element Manager	Element Manager	Element Manager	Element Manager
Router Admin	Element Manager	Element Manager	Element Manager	Element Manager
Name Server	Element Manager	Element Manager	Element Manager	Element Manager
Fault Management				
Show switch events	Yes	Yes	Yes	Yes
Syslog registration and forwarding	Yes	Yes	Yes	Yes
SNMP trap registration and forwarding	Yes	Yes	Yes	Yes
Trap configuration, credentials, and customization	Yes	Yes	Yes	Yes
Event forwarding	No	Yes	Yes	Yes
Event custom report	No	Yes	Yes	Yes
Event processing (event policies and pseudo events)	No	Yes	Yes	Yes
Common SNMP/Trap registration	Yes	Yes	Yes	Yes
FCoE configuration management	Yes	Yes	Yes	Yes
Firmware Management and SupportSave				
Firmware download	Yes	Yes	Yes	Yes
Capture SupportSave	Yes	Yes	Yes	Yes
GSLB management	No	Yes	Yes	Yes
HBA management				
HBA management	Yes	Yes	Yes	Yes
VM management	No	Yes	Yes	Yes
Driver/DIOS management	No	No	No	No
Fabric assigned WWN	No	No	No	No
IPv6 Server - Product support	Yes	Yes	Yes	Yes
NOTE: Only supported in the application when IPv6 is supported on the product.				
Layer 2 trace route	No	Yes	Yes	No
License	No	Yes	Yes	Yes
MLX/XMR management	No	Yes	Yes	Yes
MPLS management				
LSP	No	Yes	Yes	Yes
VCID pool	No	Yes	Yes	Yes
VLL manager	No	Yes	Yes	Yes

TABLE 21 IP features supported (Continued)

Feature	Professional	Base Licensed version	Base with Licensed Ethernet Fabrics	Base with Unlicensed Ethernet Fabrics
VLL monitor	No	Yes	Yes	Yes
VPLS manager	No	Yes	Yes	Yes
VPLS monitor	No	Yes	Yes	Yes
Performance management - SNMP monitoring				
Real Time Performance collection, display, and reports	Yes	Yes	Yes	Yes
Historical Performance collection, display, and reports	No	Yes	Yes	Yes
Thresholds	No	Yes	Yes	Yes
Data aging	No	Yes	Yes	Yes
Performance management - Traffic Analysis (sFlow)				
sFlow configuration payload (Configuration Wizard)	No	Yes	Yes	Yes
Monitoring reports	No	Yes	Yes	No
Accounting reports	No	Yes	Yes	Yes
Custom reports	No	Yes	Yes	Yes
Policy Monitor	Yes	Yes	Yes	Yes
Power Center	Yes	Yes	Yes	Yes
Reports				
IP product inventory report	Yes	Yes	Yes	Yes
SSL Certificate management	No	Yes	Yes	Yes
Third Party Device support	No	Yes	Yes	Yes
Security management				
MAC filter configuration	Yes	Yes	Yes	Yes
L2 ACL configuration	Yes	Yes	Yes	Yes
L3 ACL configuration	Yes	Yes	Yes	Yes
Services	Yes	Yes	Yes	Yes
Networks	Yes	Yes	Yes	Yes
Switch configuration management Basic configurations through the Element Manager	Yes	Yes	Yes	Yes
Telnet	Yes	Yes	Yes	Yes
Tools launcher (Setup Tools)	No	Yes	Yes	Yes
Topology management	Yes	Yes	Yes	Yes
User Management	No	Yes	Yes	Yes
VCS Trace Route				
Trace route	Yes	Yes	Yes	Yes
Historical Graphs/Tables	No	Yes	Yes	Yes

A Edition feature support

TABLE 21 IP features supported (Continued)

Feature	Professional	Base Licensed version	Base with Licensed Ethernet Fabrics	Base with Unlicensed Ethernet Fabrics
VIP Server management	No	Yes	Yes	Yes
VLAN management	Yes	Yes	Yes	Yes
VM Plugin Support	No	Yes	Yes	Yes
Web Element Manager	Yes	Yes	Yes	Yes
Web Tools/Fabric Watch	Yes	Yes	Yes	Yes
Zoning				
Member selection	Yes	Yes	Yes	Yes
Zone editing	Yes	Yes	Yes	Yes
Live fabric library scope	Yes	Yes	Yes	Yes
Zone alias support	Yes	Yes	Yes	Yes
Delete Zone database	No	Yes	Yes	Yes
Impact analysis	Yes	Yes	Yes	Yes
Remove offline devices	No	Yes	Yes	Yes
Device to Zone / zoneset participation analysis	Yes	Yes	Yes	Yes
LSAN Zones	No	Yes	Yes	Yes
Rolling back to an activated zone database	No	Yes	Yes	Yes
Import or export a zone database	No	Yes	Yes	Yes

Management server and client ports

The Management application has two parts: the Server and the Client. The Server is installed on one machine and stores device-related information; it does not have a user interface. To view information through a user interface, you must log in to the Server through a Client. The Server and Clients may reside on the same machine, or on separate machines. If you are running Professional, the server and the client must be on the same machine.

In some cases, a network may utilize virtual private network (VPN) or firewall technology, which can prohibit communication between Products and the Servers or Clients. In other words, a Server or Client can find a Product, appear to log in, but is immediately logged out because the Product cannot reach the Server or Client. To resolve this issue, check to determine if the ports in the table below need to be opened up in the firewall.

NOTE

Professional edition does not support remote clients.

Table 22 lists the default port numbers and whether or not it needs to be opened up in the firewall and includes the following information:

- **Port Number** – The port at the destination end of the communication path.
- **Ports** – The name of the port.
- **Transport** – The transport type (TCP or UDP).
- **Description** – A brief description of the port.
- **Communication Path** – The “source” to “destination” values. Client and Server refer to the Management application client and server unless stated otherwise. Product refers to the Fabric OS, Network OS, or IronWare OS devices.
- **Open in Firewall** – Whether the port needs to be open in the firewall.

NOTE

For bi-directional protocols, you must open the firewall port bi-directionally.

TABLE 22 Port usage and firewall requirements

Port Number	Ports	Transport	Description	Communication Path	Open in Firewall
20 ¹	FTP Port (Control)	TCP	FTP Control port for internal FTP server	Client-Server Product-Server	Yes
21 ¹	FTP Port (Data)	TCP	FTP Data port for internal FTP server	Client-Server Product-Server	Yes
22 ²	SSH or SCP or SFTP	TCP	Secure telnet and secure upload and download to product	Server-Product Client -Product Product - Server	Yes
23	Telnet	TCP	Telnet port from server/client to product	Server-Product Client-Product	Yes
25 ²	SMTP Server port	TCP	SMTP Server port for e-mail communication if you use e-mail notifications without SSL	Server-SMTP Server	Yes

A Management server and client ports

TABLE 22 Port usage and firewall requirements (Continued)

Port Number	Ports	Transport	Description	Communication Path	Open in Firewall
49 ²	TACACS+ Authentication port	TCP	TACACS+ server port for authentication if you use TACACS+ as an external authentication	Server-TACACS+ Server	Yes
69	TFTP	UDP	File upload/download to product	Product-Server	Yes
80 ²	Management application HTTP server	TCP	Non-SSL HTTP/1.1 connector port if you use secure client-server communication. You need this port for HTTP redirection	Client-Server	Yes
80 ¹	Product HTTP server	TCP	Product non-SSL http port for http and CAL communication if you do not use secure communication to the product	Server-Product	Yes
			Product non-SSL http port for http and CAL communication if you do not use secure communication to the product and you do not use the Management application server proxy	Client-Product	Yes
161 ²	SNMP port	UDP	Default SNMP port	Server-Product	Yes
162 ²	SNMP Trap port	UDP	Default SNMP trap port	Product-Server	Yes
389 ²	LDAP Authentication Server Port	UDP	LDAP server port for authentication if you use LDAP as an external authentication	Server-LDAP Server	Yes
		TCP			
443 ^{1, 2}	HTTPS server	TCP	HTTPS (HTTP over SSL) server port if you use secure client - server communication	Client-Server	Yes
443 ²			HTTPS (HTTP over SSL) server port if you use secure communication to the product	Server-Product	Yes
443			HTTPS (HTTP over SSL) server port if you use secure communication to the product and you do not use the Management application server proxy	Client-Product	Yes
			443 ²	HTTPS (HTTP over SSL) server port if you use vCenter discovery	Server-vCenter Server
465 ²			SMTP Server port for SSL	TCP	SMTP Server port for e-mail communication if you use e-mail notifications with SSL
514 ²	Syslog Port	UDP	Default Syslog Port	Product-Server Managed Host - Server	Yes

TABLE 22 Port usage and firewall requirements (Continued)

Port Number	Ports	Transport	Description	Communication Path	Open in Firewall
636 ²	LDAP Authentication SSL port	TCP	LDAP server port for authentication if you use LDAP as an external authentication and SSL is enabled	Server-LDAP Server	Yes
1812 ²	RADIUS Authentication Server Port	UDP	RADIUS server port for authentication if you use RADIUS as an external authentication	Server-RADIUS Server	Yes
1813 ²	RADIUS Accounting Server Port	UDP	RADIUS server port for accounting if you use RADIUS as an external authentication	Server-RADIUS Server	Yes
5432	Database port	TCP	Port used by database if you access the database remotely from a third-party application	Remote ODBC-Database	Yes
5988	SMI Server port	TCP	SMI server port on the Management application and the CIM/SMI port on HBAs if you use SMI Agent without SSL	SMI Client- Server Server-Managed Host	Yes Yes
5989 ^{1, 2}	SMI Server port with SSL enabled	TCP	SMI Agent port on the Management application and the CIM/SMI port on HBAs if you use SMI Agent with SSL	SMI Agent Server-Client Server-Managed Host	Yes Yes
6343 ²	sFlow	UDP	Receives sFlow data from products if you are monitoring with sFlow	Product-Server	Yes
24600 ^{1, 2}	JBoss remoting connector port	TCP	Use for service location. Uses SSL for privacy.	Client-Server	Yes
24601 ^{1, 2}	JBoss Transaction Services Recovery Manager port	TCP	Not used remotely.	Server	Yes
24602 ^{1, 2}	JBoss Transaction Status Manager port	TCP	Not used remotely.	Server	Yes
24603 ^{1, 2}	HornetQ Netty port	TCP	Use for JMS (Java Message Service), async messages from server to client. Uses SSL for privacy.	Client-Server	Yes
24604 ^{1, 2}	JMX remoting connector port	TCP	Management console port for native connector (JMX)	Client-Server	Yes
24605 ^{1, 2}	JBoss https management port TCP	TCP	Management console port for HTTPS based management	Client-Server	Yes
24606 ^{1, 2}	Fault Management CIM Indication Listener Port	TCP	Used for HBA management	Managed Host - Server	Yes
24607 ^{1, 2}	HCM Proxy CIM Indication Listener port	TCP	Used for HBA management	Managed Host - Server	Yes

A Management server and client ports

TABLE 22 Port usage and firewall requirements (Continued)

Port Number	Ports	Transport	Description	Communication Path	Open in Firewall
24608 ²	Reserved for future use	TCP	Not used	Client - Server	No
24609 ²	Reserved for future use	TCP	Not used	Client - Server	No
24610 ²	Reserved for future use	TCP	Not used	Client - Server	No
34568	HCM Agent discovery port	TCP	Used for HBA management via JSON	Server - Managed Host	Yes
55556 ¹	Launch in Context (LIC) client hand shaking port	TCP	Client port used to check if a Management application client opened using LIC is running on the same host NOTE: If this port is in use, the application uses the next available port.	Client	No

1. Port does not need to be open in the firewall for Professional edition.
2. The default port number. You must use the same port number for all products or hosts managed by the Management server. This port is configurable in the Management server; however, some products and firmware versions do not allow you to configure a port.