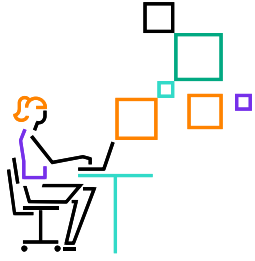


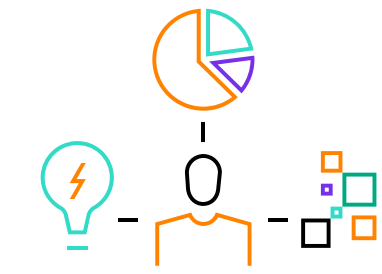
Bring the power of supercomputing to data centers of any size

HPE Apollo family: purpose-built for HPC workloads



The amount of data created over the next three years will be more than the data created over the past 30 years, and the world will create more than three times the data over the next five years than it did in the previous five.¹ As a result, everyone, from small private companies to the largest government labs, will need technology that extends the power of computing to turn massive amounts of data into actionable insights.

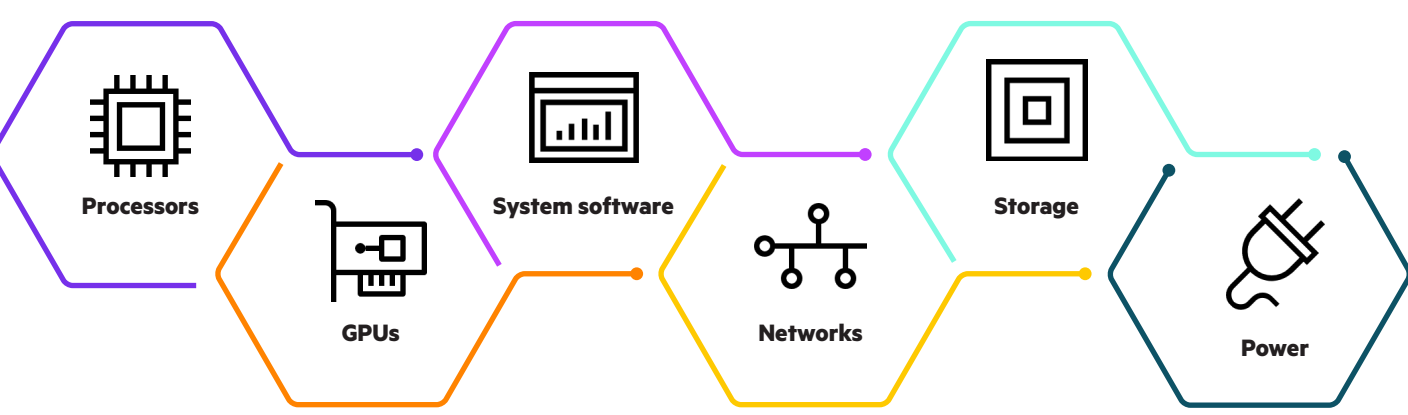
Enter the exascale era with HPE Apollo servers



We are now in the exascale era—where data growth is exponential due to high-performance computing (HPC), artificial intelligence (AI), Internet of Things (IoT), and analytics. The high-performing, density-optimized HPE Apollo servers are purpose-built to provide the computing power you need to thrive in demanding environments.

Scale data centers on your terms

HPE Apollo servers bring the power of supercomputers to data centers of any size. They integrate:







Your data centers can now experience quicker deployments and faster time to value, support new workloads and unlock the power of your data—in real time, with fewer resources, and on tighter budgets. This means you can focus on:



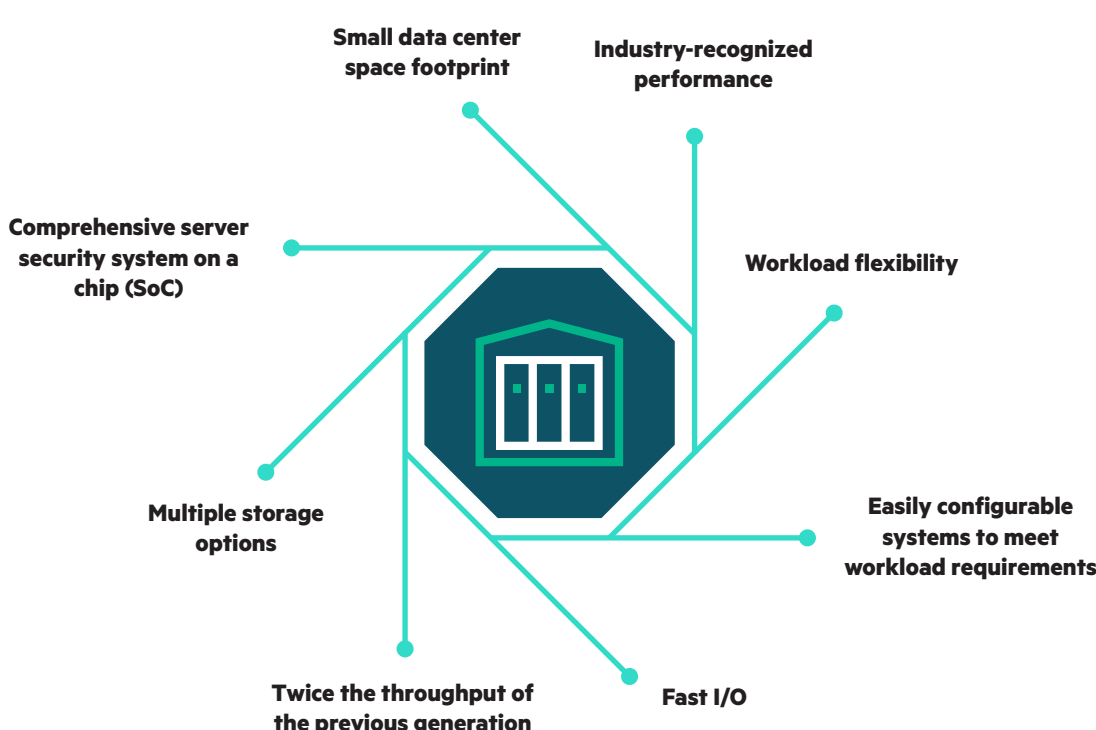
And HPE GreenLake for HPC offers a flexible, as-a-service consumption model, while HPE Financial Services helps you ensure business continuity with its creative financing.

Whether you are beginning your digital transformation journey or are ready to take on complex workloads, you need to be competitive and drive profitability. The HPE Apollo family helps you achieve just that. **With HPE Apollo, you can:**




 <ul style="list-style-type: none"> • Balance performance and efficiency with workload optimization – HPE Apollo bundles allow you to configure components to fit your evolving needs 	 <ul style="list-style-type: none"> • Accelerate time-to-value by reducing implementation time
 <ul style="list-style-type: none"> • Scale up and scale out your configuration – As your needs vary, scale your solutions easily with HPE Apollo server nodes 	 <ul style="list-style-type: none"> • Choose flexible as-a-service consumption and hybrid cloud IT environment

Why choose HPE?

HPE Apollo systems deliver the right amount of performance and efficiency, reduce implementation time, and offer the flexibility to scale up or down as needed for any HPC workload. In addition, you can expect:

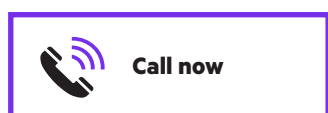
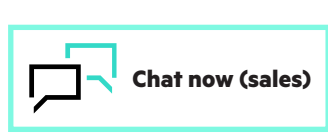


Features that offer quality and productivity

	<h3>Flexible scale-out building blocks</h3> <ul style="list-style-type: none"> Mix-and-match elements in the same chassis Manage at the node, chassis, rack, or cluster levels 	<ul style="list-style-type: none"> Provides future-proof flexibility for custom storage and I/O needs Fulfills preferred data center strategy
	<h3>Comprehensive software portfolio for efficient operations</h3> <ul style="list-style-type: none"> HPE Performance Cluster Manager HPE Cray Programming Environment HPE Message Passing Interface 	<ul style="list-style-type: none"> Offers wide-ranging power management Enhances the entire system view, along with reduced time to insight Helps maximize performance in less time
	<h3>Complete server security and management</h3> <ul style="list-style-type: none"> Silicon root of trust HPE iLO 5 advanced premium security CNSA, FIPS, high security modes Validated against NIST 800-53 HPE Intelligent Provisioning/HPE Pointnext Services 	<ul style="list-style-type: none"> Secures from the start, even before the OS boots Recovers to a previous state or settings Balances your security and interoperability Complies with data protection requirements Erases completely for security compliance at end-of-life, in accordance with NIST guidelines

Now is the time to bring the power of supercomputing to your data center, on your terms, with the HPE Apollo family.

Make the right purchase decision. Contact our presales specialists.



Learn more at hpe.com/info/apollo



 Get updates

¹ Global DataSphere, IDC, May 2020
Worldwide Global DataSphere Forecast, 2021–2025: The World Keeps Creating More Data—Now, What Do We Do with It All?