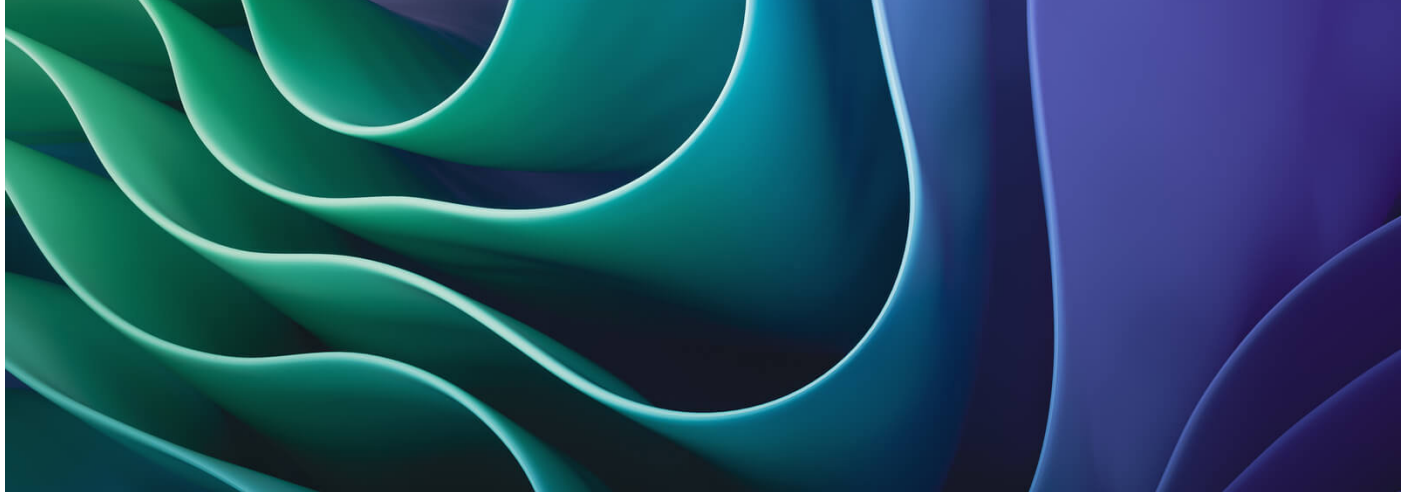




Artificial intelligence training from HPE





It's a data-driven world

Businesses are inundated with data. It's coming at an exponentially increasing rate from an explosion of data sources. AI technology is playing an ever-increasing role in helping business leaders make critical decisions. The ability to unlock insights from data can be a key differentiator in how businesses design products, manage supply chains, detect fraud, secure their networks, and much more.

But most enterprises are still not seeing as much value from their AI investments as they should. Indeed, many AI models that are developed are never put into production.

Often a key reason for these AI project failures is that the people involved don't have the skills or knowledge needed to be successful in their new AI environment. With training from HPE, your employees gain the skills and knowledge to unlock the full potential of your data — enabling your enterprise to use AI as a competitive advantage.

Artificial intelligence training

Training from HPE helps make AI work for you.

No matter your industry, the future depends on artificial intelligence and machine learning to make better business decisions. Artificial intelligence, machine learning, and deep learning are among the fastest growing fields in technology.

Not sure how to get started with your AI initiatives? Unsure how to best manage — from end to end — the critical aspects of your AI implementation (for example, data preparation, rapid model development, tuning, and deployment)? Uncertain how to secure your data from edge to cloud?

HPE's comprehensive AI curriculum includes:

- Several basic and advanced AI courses, ranging from AI Essentials and AI Foundation, to Deep Learning in Theory and Practice
- DevOps training — teaching your people how to implement the practices and tools needed to deliver applications quicker and with more agility



- Courses on open-source container technologies like Docker and Kubernetes
- Full support for HPE Ezmeral Unified Analytics and HPE Ezmeral Data Fabric technologies, including HPE Ezmeral Runtime Enterprise and HPE Ezmeral ML Ops
- Introductory and advanced training support for Microsoft Azure
- A robust [IT service management](#) and [cybersecurity](#) curricula providing the skills to secure your data — and the process knowledge to best govern your data's collection and use
- In-depth training courses to address information management, information infrastructure, and data analytics needs. For example, our comprehensive training for [HPE Cray Supercomputing](#), [HPE Superdome](#), [HPE Synergy](#), and [HPE storage infrastructure](#) allows you to optimize performance for those environments
- [HPE Digital Learner](#) subscriptions that provide a continuous learning channel for new and emerging technologies

For advanced students, HPE also offers a series of workshops targeting the practical skills and knowledge needed by data professionals, including data scientists, data analysts, data engineers, and others. These 2-day workshops focus on building and governing effective AI and ML models, visualizing and analyzing data, and utilizing deep learning tools and techniques to solve practical business problems. The following data-related workshops are now available:

- [H38HQS Building Artificial Intelligence Models](#)
- [H38HNS Visualizing and Analyzing Data](#)
- [H38HPS Building Machine Learning Models](#)

In short, HPE provides the education and enablement services to tackle the challenges of digital transformation and to beat your competition. With training from HPE, your data professionals — data scientists, data analysts, AI architects, ML engineers, DevOps practitioners, and others — acquire skills to make your business succeed.

Here is the robust HPE AI training curriculum

HPE artificial intelligence/machine learning/deep learning curriculum

<p>H62C4S Artificial Intelligence Essentials 1 day</p>	<p>HQ7H8S Artificial Intelligence Foundation 3 days</p>	<p>H61X2S Using HPE AI and Machine Learning 2 days</p>	<p>HU0F0S Deep Learning in Theory and Practice 2 days</p>
--	---	--	---

Figure 1. Artificial intelligence, machine learning, and deep learning courses from HPE (instructor-led and virtual instructor-led)

HPE Ezmeral Runtime Enterprise curriculum

Containers and DevOps	<p>H0DS6S HPE DevOps Essentials 3 days</p>	<p>H0DS3S Docker 3 days</p>	<p>HJ7F2S Kubernetes Administration 3 days</p>
	<p>HJ7H1S HPE Ezmeral Runtime Enterprise App Image Development — Kubernetes 2 days</p>	<p>HG7G2S HPE Ezmeral Runtime Enterprise Administration 3 days</p>	<p>HJ7H2S HPE Ezmeral ML Ops for Kubernetes 1 day</p>
	<p>HG7E0S HPE Ezmeral Data Fabric Cluster Administration 3 days</p>	<p>H37WXS HPE Ezmeral Data Fabric (product certification) 3 days</p>	

Microsoft Azure curriculum

Microsoft Azure and AI	<p>HJ0W6S Microsoft Azure Fundamentals (AZ-900T00) 1 day</p>	<p>HJ0V9S Microsoft Azure Administrator (AZ-104T00) 4 days</p>	<p>HQ6Z2S Microsoft Azure Data Fundamentals (DP-900T00) 1 day</p>
	<p>H9P83S Data Engineering on Microsoft Azure (DP-203T00) 4 days</p>	<p>HQ6Y9S Microsoft Azure AI Fundamentals (AI-900T00) 1 day</p>	<p>HM9K2S Designing & Implementing a Microsoft Azure AI Solution (AI-102T00) 4 days</p>

Figure 2. Courses (instructor-led and virtual instructor-led) to help you improve your data

Information infrastructure and management curriculum

With training from HPE, you get the most from your infrastructure investment — achieving unprecedented simplicity, agility, and data intelligence — in an efficient and secure environment. Check out our array of popular courses (including certification preparation) covering information infrastructure, IT service management, governance, and cybersecurity.

HPE compute	<p><u>H8PE4S</u></p> <p>HPE Superdome Flex Server Administration</p> <p>3 days</p>	<p><u>H61N4S</u></p> <p>HPE Superdome Flex 280 Administration</p> <p>2 days</p>	<p><u>H61P6S</u></p> <p>HPE OneView for Compute</p> <p>2 days</p>	<p><u>H4C12S</u></p> <p>HPE Serviceguard on Linux®</p> <p>3 days</p>
	<p><u>H38FRAAE</u></p> <p>HPE Cray EX2500 Hardware Training</p> <p>1 hr.</p>	<p><u>HQ7D5S</u></p> <p>HPE Cray EX System Admin with CSM</p> <p>5 days</p>	<p><u>H9TT2S</u></p> <p>HPE Cray EX System Admin with HPCM</p> <p>5 days</p>	<p><u>H38FSAAE</u></p> <p>HPE Cray XD2000 System</p> <p>2 hrs.</p>
	<p><u>H61N2S</u></p> <p>Managing HPE Alletra 6000 and HPE Alletra 5000</p> <p>3 days</p>	<p><u>H61N3S</u></p> <p>Managing HPE Alletra 9000</p> <p>3 days</p>	<p><u>HM9Q4S</u></p> <p>Managing HPE Primera</p> <p>3 days</p>	
	<p><u>HU0C1S</u></p> <p>ITIL® 4 Foundation</p> <p>2 days</p>	<p><u>NIST Cybersecurity Professional (NCSP) Certification and Training</u></p>		

Figure 3. Information infrastructure, information management, governance, and cybersecurity training from HPE (instructor-led and virtual instructor-led)

Simplify your training purchase with HPE Education Learning Credits for Data Analytics Services (SKU H9P13E/H9P13A1)

With HPE Education Learning Credits for Data Analytics Services, you purchase training credits ahead of time and redeem them as needed. Your staff gets the training they need — when they need it — and your business can accelerate and improve their deployment of new technologies.

Include [HPE Education Learning Credits](#) for Data Analytics Services (H9P13E or H9P13A1) with your HPE quote.

- With HPE Education Learning Credits, you buy training units for a specific technology of your choice (for example, data analytics) instead of purchasing specific classes. You don't have to plan up front around specific courses, who should attend, or where and when to attend.
- HPE Education Learning Credits are convenient and easy-to-use, providing flexibility to make the best training decisions for your organization.
- Typically, HPE Education Learning Credits are purchased along with the HPE products they support, in a single transaction. This reduces the procurement workload and allows you to match training with respective IT investments.
- HPE Education Learning Credits can be applied to the registration for any course offered by [HPE Services](#), whether delivered face-to-face, or via virtual instructor-led training (VILT). HPE Education Learning Credits can also be applied toward the purchase of [HPE Digital Learner](#) subscriptions.

5 reasons to choose HPE as your AI training partner

1. Learn HPE and in-demand IT industry technologies from expert instructors.
2. Build career-advancing power skills.
3. Enjoy personalized learning journeys aligned to your company's needs.
4. Choose how you learn: [in-person](#), [virtually](#), [online](#) — or continuous anytime, anywhere eLearning with [HPE Digital Learner](#) subscriptions.
5. Sharpen your skills with access to real environments in [virtual labs](#).

Explore our simplified purchase options, including [HPE Education Learning Credits](#).

Contact us

For additional assistance, please [contact](#) your local education representative for HPE Services.

Learn more at

[HPE.com/ww/learnai](https://www.hpe.com/ww/learnai)

[HPE.com/ww/learnbigdata](https://www.hpe.com/ww/learnbigdata)

