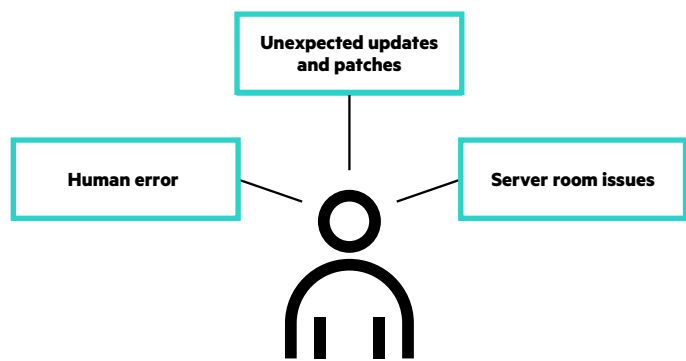


# Design a better disaster recovery plan

Use IT process automation to accelerate testing and recovery

## Disasters happen

**Natural and human-induced events can bring your business to a halt.**



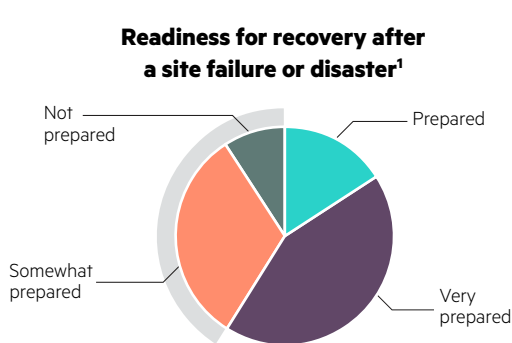
**You need a disaster recovery plan.**

Establish processes and procedures to avoid or recover from IT downtime.

## Are your people and processes ready?

### Disaster preparedness

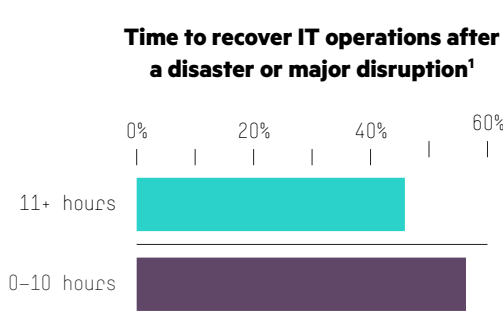
More than 40% are not ready



Manual process can't keep up with the pace of change, causing many DR plans to be out of date.

### Recovery takes too long

47% take 11+ hours to recover



What causes the delay? Manual and error-prone tasks slow recovery.

### Impact of poor disaster recovery<sup>1</sup>



**Lost employee productivity**



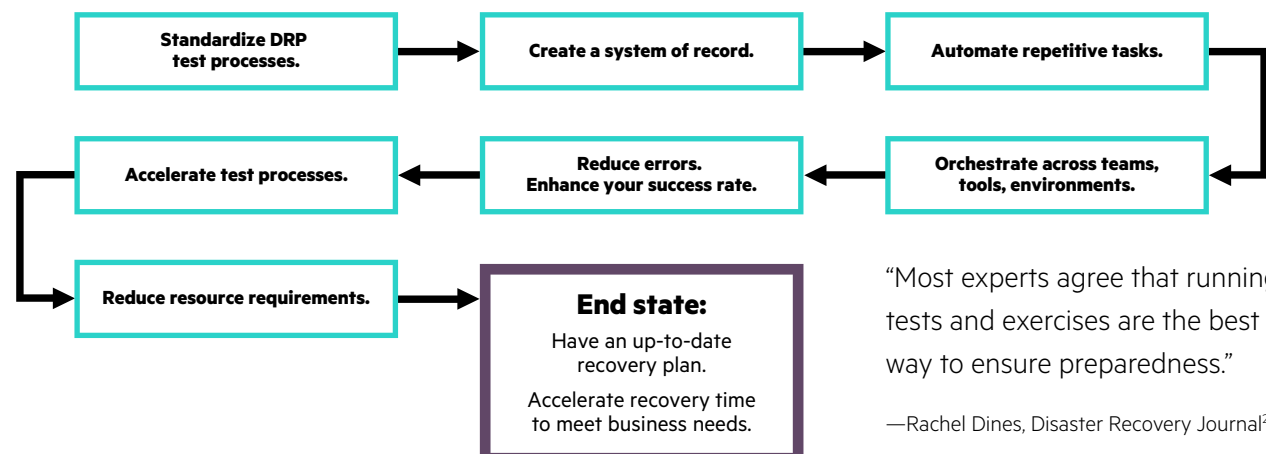
**Lost revenue and business opportunities**



**Lost customer confidence**

## Solve the challenges of DR readiness

**Automate and orchestrate DR planning processes to keep your plans up to date.**

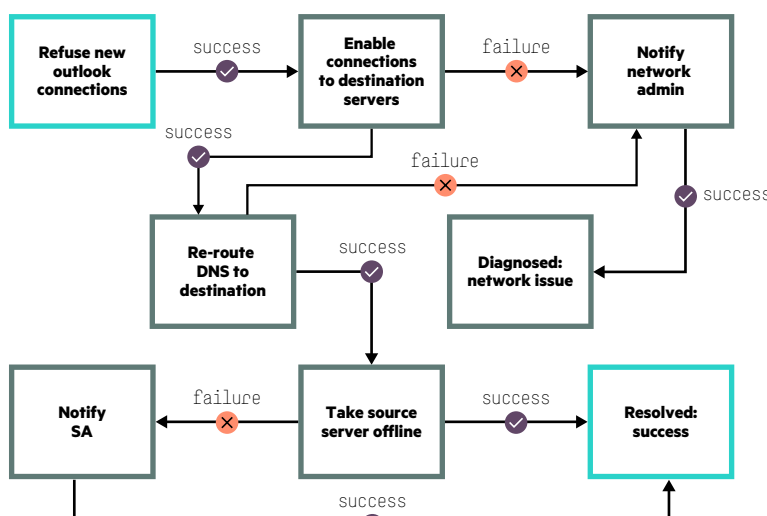


“Most experts agree that running tests and exercises are the best way to ensure preparedness.”  
—Rachel Dines, Disaster Recovery Journal<sup>2</sup>

## Be prepared with HPE Operations Orchestration IT process automation software

### Standardize repetitive test and recovery procedures into automated workflows

Example failover flow with HPE Operations Orchestration



- Targets for operations orchestration:
- Domain Name System (DNS) failover
  - Storage array, server, and database replication
  - Application-consistent recovery points

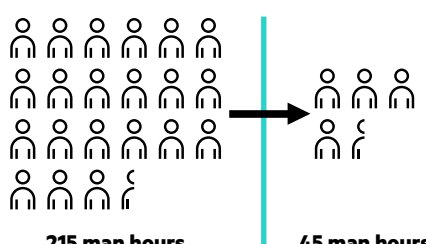
### Accelerate test and recovery procedures

Failover time for an internal application<sup>3</sup>

**45 MINUTES**  
before HPE Operations Orchestration

**9 MINUTES**  
with HPE Operations Orchestration

Reduction in time to execute a failover flow<sup>3</sup>



## Get on the path to a better disaster recovery plan.

**Explore the capabilities of HPE Operations Orchestration IT process automation software.**

[hpe.com/software/oo](http://hpe.com/software/oo)