



# Product End-of-Life Disassembly Instructions

**Product Category:** Data Storage Devices

**Marketing Name / Model**

**[List multiple models if applicable.]**

HP StoreOnce 2900 24TB Backup - BB910A

**Purpose:** The document is intended for use by end-of-life recyclers or treatment facilities. It provides the basic instructions for the disassembly of HP products to remove components and materials requiring selective treatment, as defined by EU directive 2002/96/EC, Waste Electrical and Electronic Equipment (WEEE).

## 1.0 Items Requiring Selective Treatment

1.1 Items listed below are classified as requiring selective treatment.

1.2 Enter the quantity of items contained within the product which require selective treatment in the right column, as applicable.

Item Description	Notes	Quantity of items included in product
Printed Circuit Boards (PCB) or Printed Circuit Assemblies (PCA)	With a surface greater than 10 sq cm	9
Batteries	All types including standard alkaline and lithium coin or button style batteries	1
Mercury-containing components	For example, mercury in lamps, display backlights, scanner lamps, switches, batteries	0
Liquid Crystal Displays (LCD) with a surface greater than 100 sq cm	Includes background illuminated displays with gas discharge lamps	0
Cathode Ray Tubes (CRT)		0
Capacitors / condensers (Containing PCB/PCT)		0
Electrolytic Capacitors / Condensers measuring greater than 2.5 cm in diameter or height	Depending on Power Supply Model	3
External electrical cables and cords		0
Gas Discharge Lamps		0
Plastics containing Brominated Flame Retardants weighing > 25 grams (not including PCBs or PCAs already listed as a separate item above)		0
Components and parts containing toner and ink, including liquids, semi-liquids (gel/paste) and toner	Include the cartridges, print heads, tubes, vent chambers, and service stations.	0
Components and waste containing asbestos		0
Components, parts and materials containing refractory ceramic fibers		0

Components, parts and materials containing radioactive substances		0
---	--	---

## 2.0 Tools Required

List the type and size of the tools that would typically be used to disassemble the product to a point where components and materials requiring selective treatment can be removed.

Tool Description	Tool Size (if applicable)
Torx Driver	T15
Torx Driver	T10
Flat Head Screwdriver	Medium

## 3.0 Product Disassembly Process

3.1 List the basic steps that should typically be followed to remove components and materials requiring selective treatment:

1. System Board Battery - Remove the top cover and locate the battery on the system board. With a medium flat head screw driver, remove the battery and dispose of properly.
2. Capacitors=>2.5CM - Remove the power supply from the system. With #2 Philips screw driver, remove the screws securing the top cover, then locate the capacitors and pry from the PCB with a medium flat head screw driver and dispose of properly.
- 3.
- 4.
- 5.
- 6.
- 7.
- 8.

3.2 Optional Graphic. If the disassembly process is complex, insert a graphic illustration below to identify the items contained in the product that require selective treatment (with descriptions and arrows identifying locations).

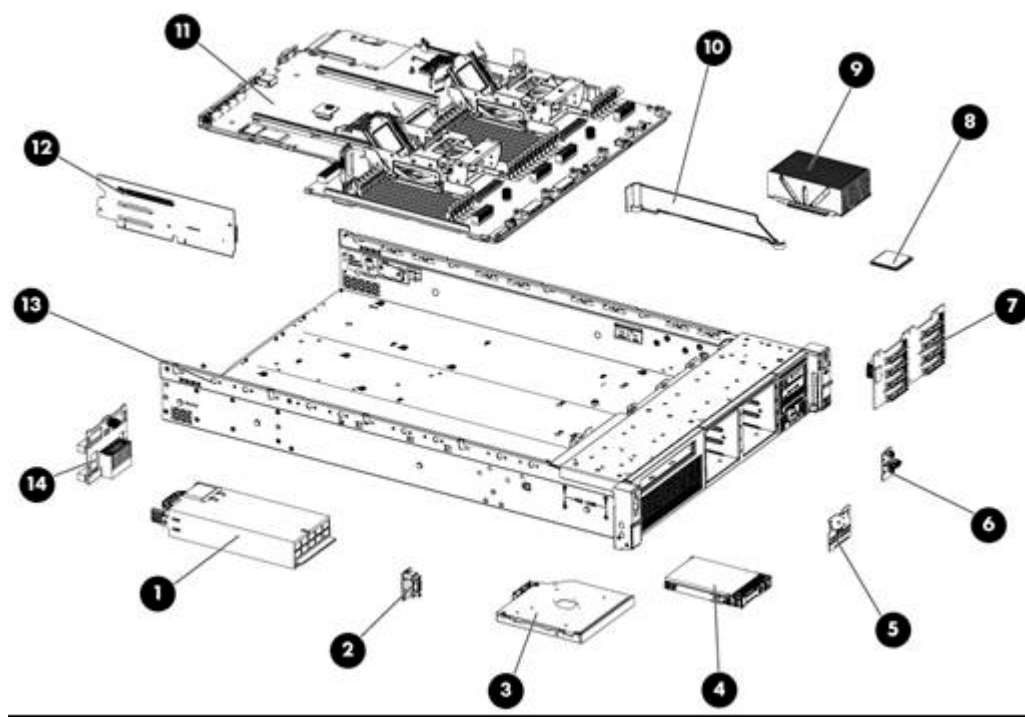
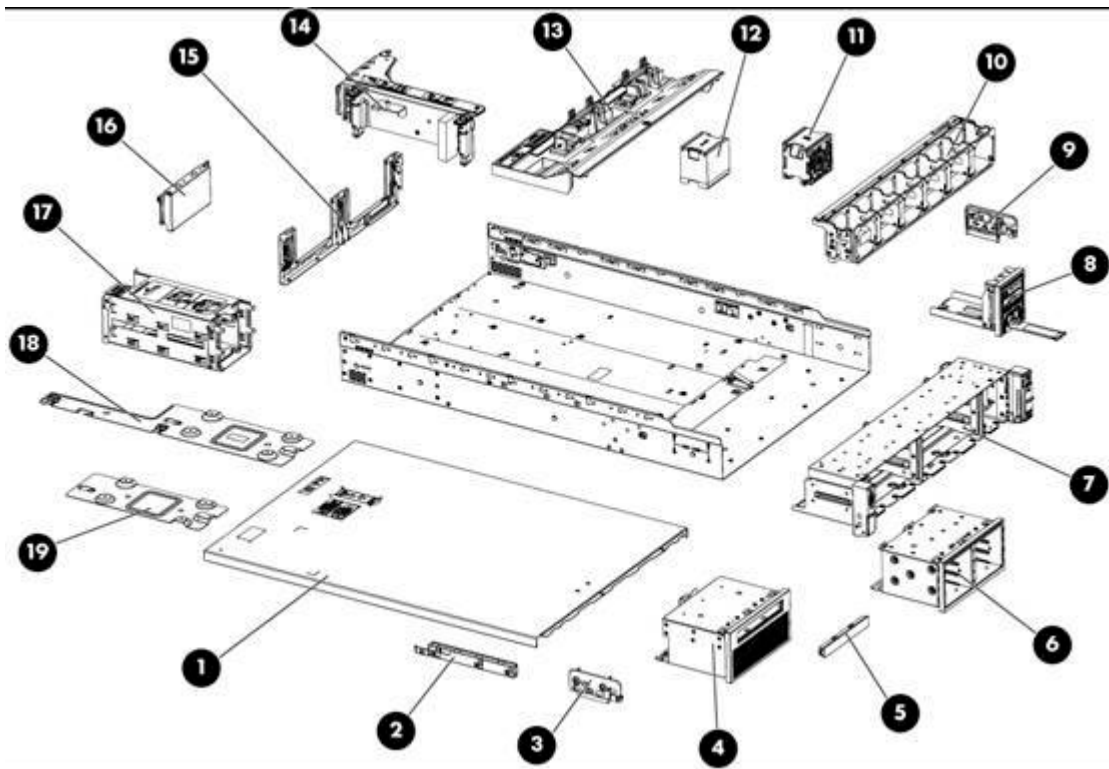
**Attachment 1 –Disassembly Diagram**

**Attachment 2 –System Battery Location**

**Attachment 3- Location of Super Cap battery**

**Attachment 4-11 - Electrolytic capacitors location in the power supply per Model Number.**

## Attachment 1

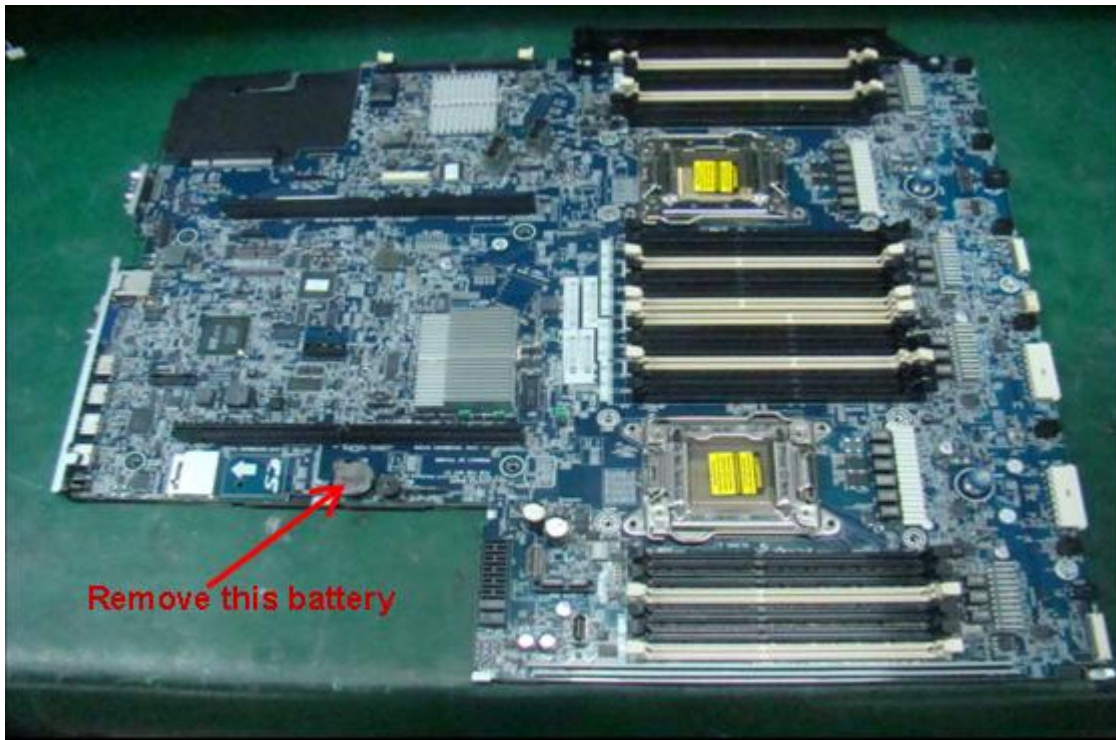


## Attachment 2

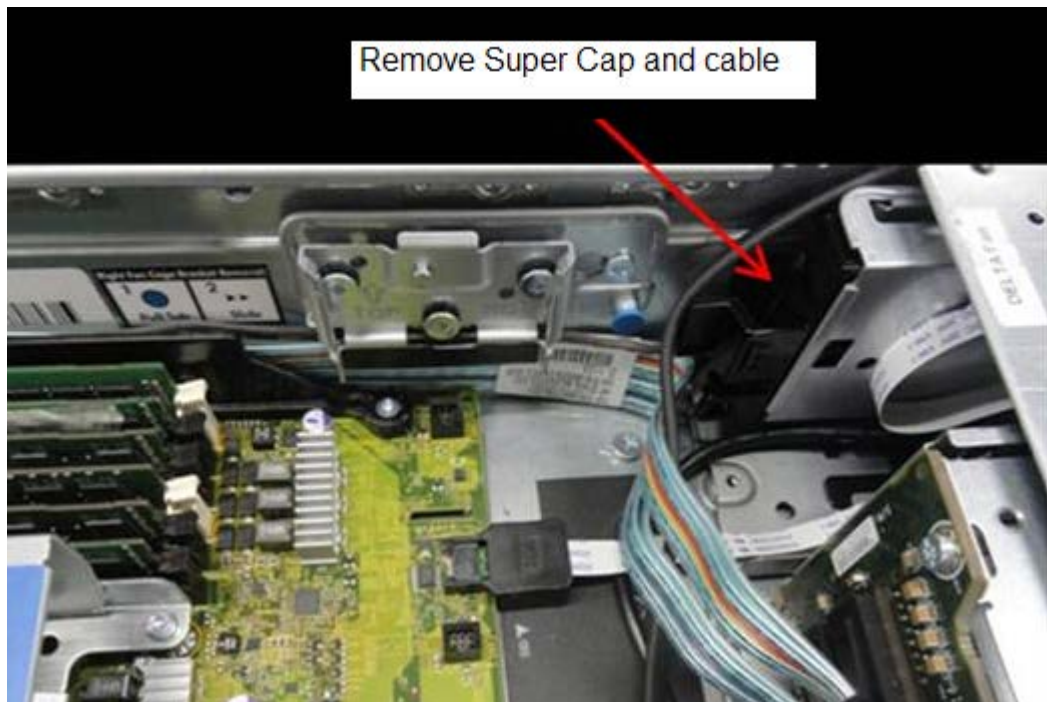
EL-MF877-00  
Template Revision B

Page 3

PSG instructions for this template are available at [EL-MF877-01](#)



### Attachment 3



### Attachment 4

EL-MF877-00  
Template Revision B

Page 4

PSG instructions for this template are available at [EL-MF877-01](#)





Model: HSTNS-PD29

Remove capacitor

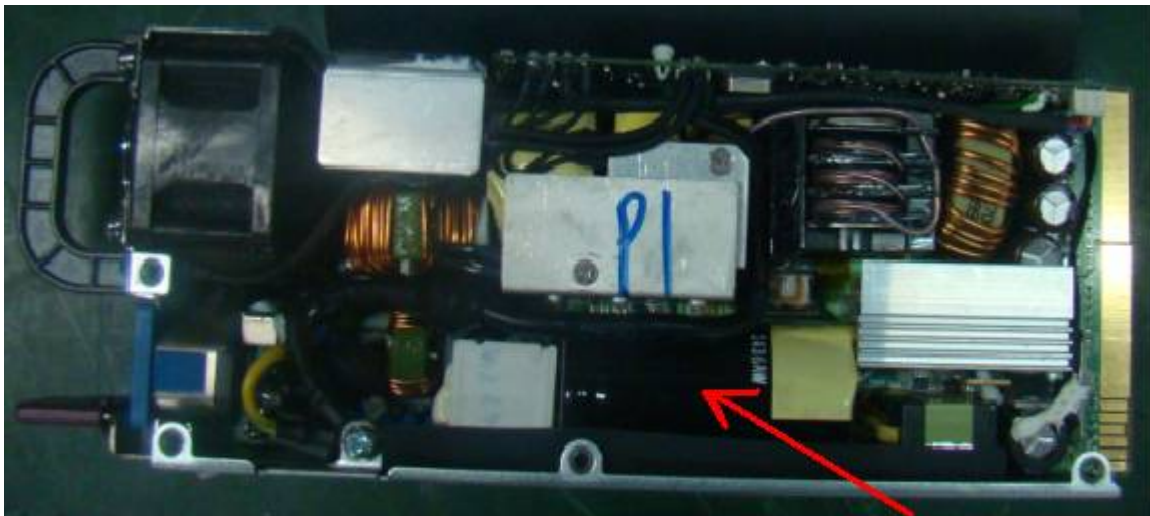
#### Attachment 5



Model: HSTNS-PD28

Remove capacitor

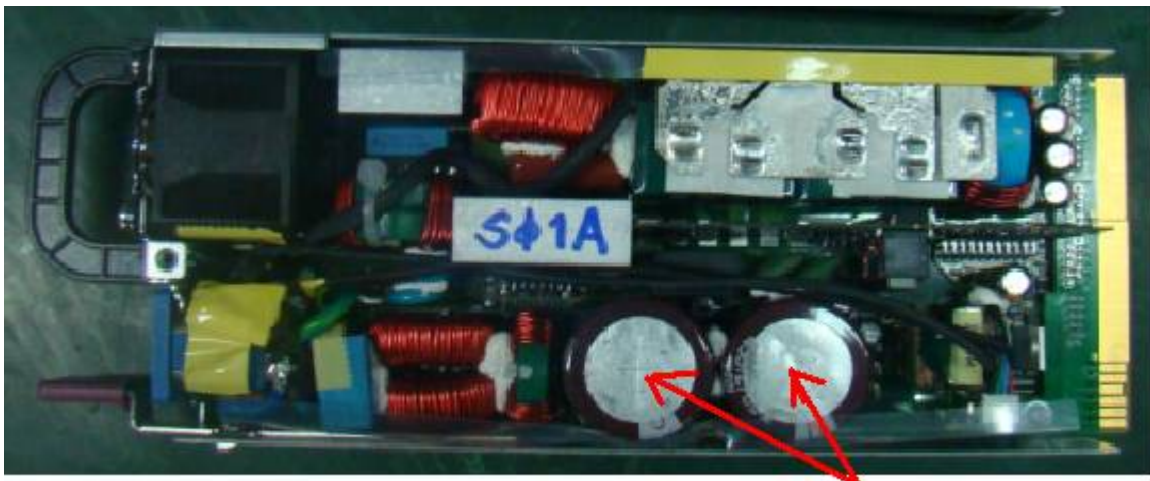
#### Attachment 6



Model: HSTNS-PD30

Remove capacitor

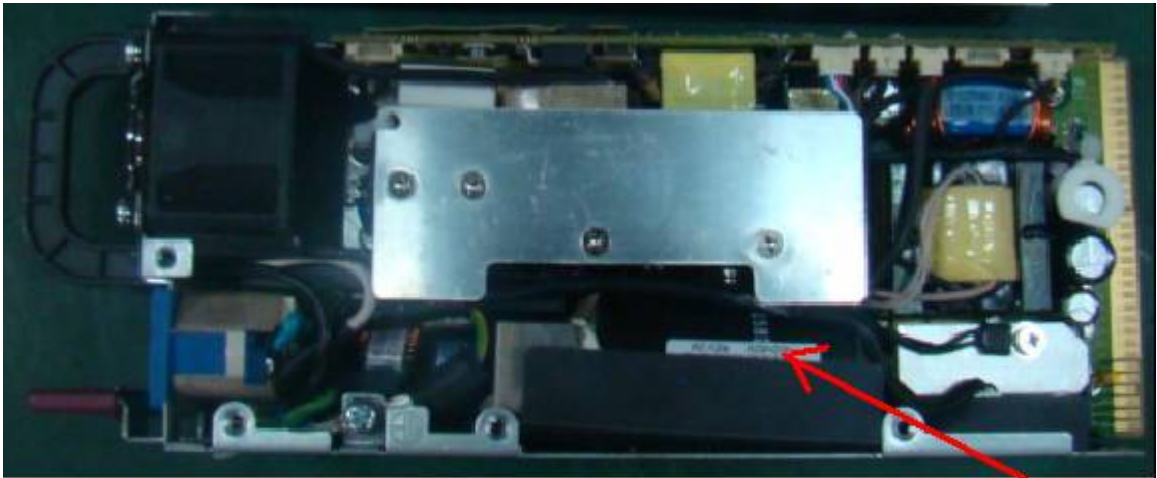
#### Attachment 7



Model: HSTNS-PR29

Remove capacitor

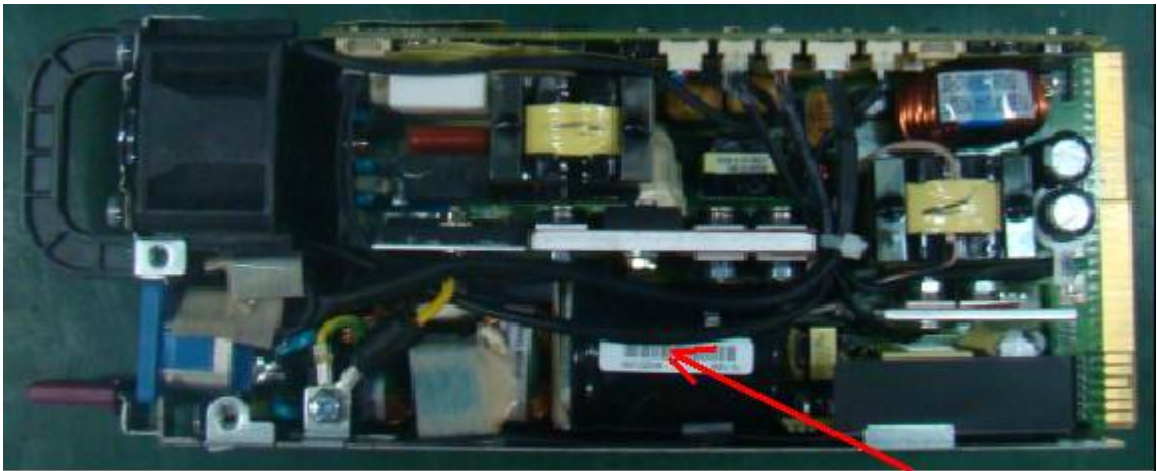
#### Attachment 8



Model: HSTNS-PL29

Remove capacitor

**Attachment 9**

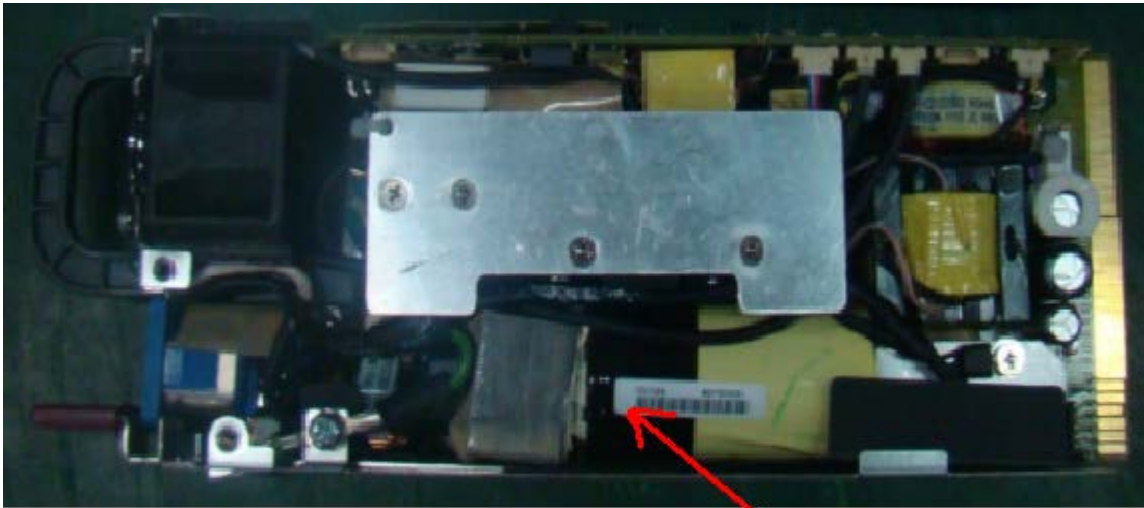


Model: HSTNS-PL28

Remove capacitor

**Attachment 10**

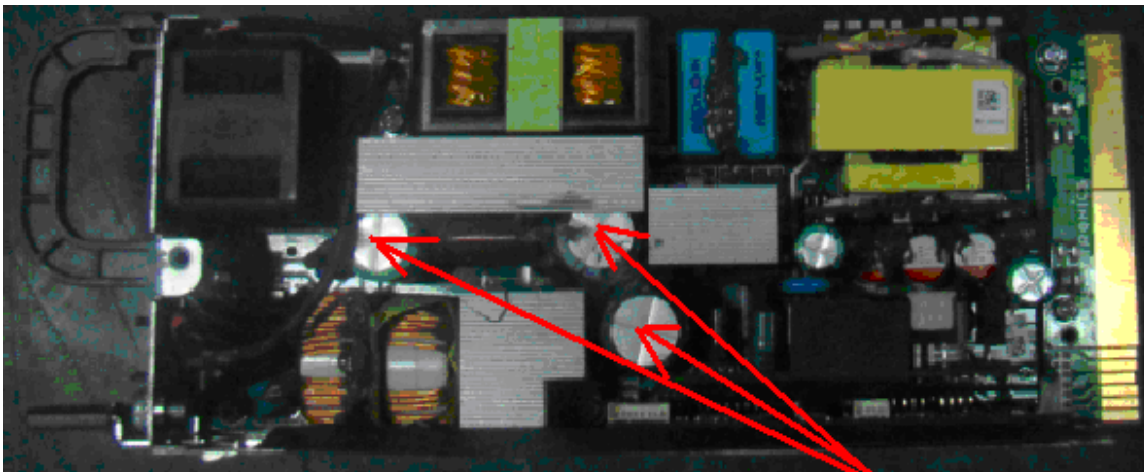




Model: HSTNS-PL30

Remove Cap

#### Attachment 11



Model: HSTNS PF04

Remove capacitor