



Product End-of-Life Disassembly Instructions

Product Category: Data Storage Devices

Marketing Name / Model

[List multiple models if applicable.]

HP StorageWorks SB920c Tape Blade / AJ401A

HP StorageWorks Ultrium 448c Tape Blade / 440947-B21

Purpose: The document is intended for use by end-of-life recyclers or treatment facilities. It provides the basic instructions for the disassembly of HP products to remove components and materials requiring selective treatment, as defined by EU directive 2002/96/EC, Waste Electrical and Electronic Equipment (WEEE).

1.0 Items Requiring Selective Treatment

1.1 Items listed below are classified as requiring selective treatment.

1.2 Enter the quantity of items contained within the product which require selective treatment in the right column, as applicable.

| Item Description | Notes | Quantity of items included in product |
|--|---|---------------------------------------|
| Printed Circuit Boards (PCB) or Printed Circuit Assemblies (PCA) | With a surface greater than 10 sq cm Main PCA Reel Motor PCA | 4 |
| Batteries | All types including standard alkaline and lithium coin or button style batteries | 0 |
| Mercury-containing components | For example, mercury in lamps, display backlights, scanner lamps, switches, batteries | 0 |
| Liquid Crystal Displays (LCD) with a surface greater than 100 sq cm | Includes background illuminated displays with gas discharge lamps | 0 |
| Cathode Ray Tubes (CRT) | | 0 |
| Capacitors / condensers (Containing PCB/PCT) | | 0 |
| Electrolytic Capacitors / Condensers measuring greater than 2.5 cm in diameter or height | | 0 |
| External electrical cables and cords | | 0 |
| Gas Discharge Lamps | | 0 |
| Plastics containing Brominated Flame Retardants | | 0 |
| Components and parts containing toner and ink, including liquids, semi-liquids (gel/paste) and toner | Include the cartridges, print heads, tubes, vent chambers, and service stations. | 0 |
| Components and waste containing asbestos | | 0 |
| Components, parts and materials containing refractory ceramic fibers | | 0 |
| Components, parts and materials containing radioactive substances | | 0 |

2.0 Tools Required

List the type and size of the tools that would typically be used to disassemble the product to a point where components and materials requiring selective treatment can be removed.

| Tool Description | Tool Size (if applicable) |
|-------------------------------|---------------------------|
| Torx screwdrivers | T-5, T-8, T-10, T15 |
| Crosshead screwdriver / knife | NA |
| Scissors | NA |

3.0 Product Disassembly Process

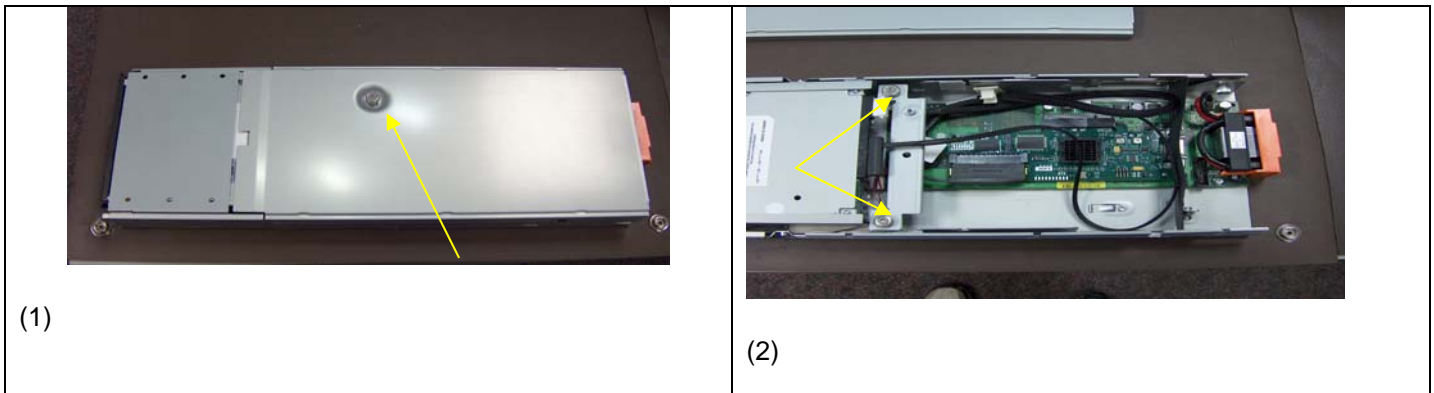
3.1 List the basic steps that should typically be followed to remove components and materials requiring selective treatment:

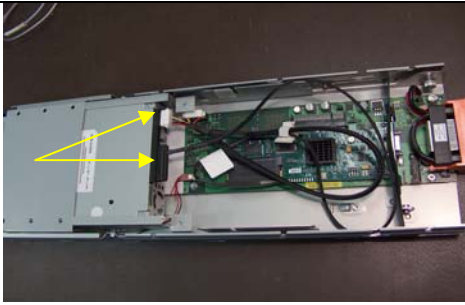
- 3.1.1 Remove top cover (T15). Image 1
- 3.1.2 Remove top cover retaining bracket (T15). Image 2
- 3.1.3 Remove Power cable and I/O connection from the tape drive. Image 3
- 3.1.4 Remove the tape drive from the sheet metal by pinching the retainers inward while pulling outward on the tape drive. (Disassembly of the tape drive is detailed below starting at 3.1.13). image 4
- 3.1.5 Loosen the thumb screw (T15) holding the sheet metal for the main logic PCA to the main sheet metal and slide the tray out several inches. Image 5
- 3.1.6 Remove the power cable, LED connector, I/O cable and air foil from the main logic board. Image 6
- 3.1.7 Fully remove the PCA sheet metal tray from the main sheet metal.
- 3.1.9 Remove the T15 retaining screw holding the HBA to the main logic board. Image 7
- 3.1.10 Remove the HBA by sliding outward away from the connector.
- 3.1.11 Remove the main logic PCA by removing the 5 (T15) screws which attach the PCA to the sheet metal. Image 8
- 3.1.12 Remove the LED bezel from the front of the sheet metal. Image 9

Specific steps for the Tape drive:

- 3.1.13. Clip off front panel. Image 10
- 3.1.14. Remove lid by removing 4 x T-8 screws. See image 11.
- 3.1.15. Remove main PCA. Disconnect 3 x FPCs and lift out the PCA - > 10 square cm's. See image 12.
- 3.1.16. Remove the reel motor PCA - > 10 square cm's. Remove take up reel – use a pair of scissors to cut the tape; remove grab stop; move carrier approximately 2 cm into the mechanism and slide out the reel motor PCA. See images (13-16).

3.2 Optional Graphic. If the disassembly process is complex, insert a graphic illustration below to identify the items contained in the product that require selective treatment (with descriptions and arrows identifying locations).





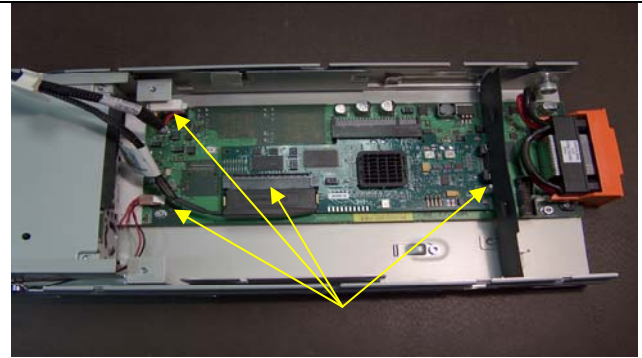
(3)



(4)



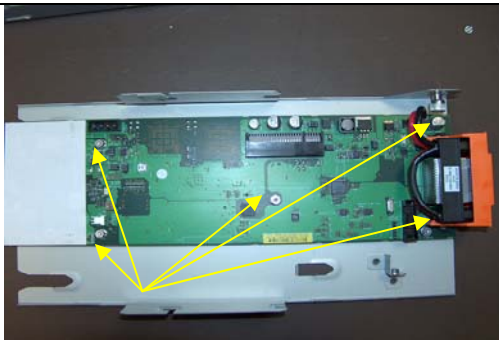
(5)



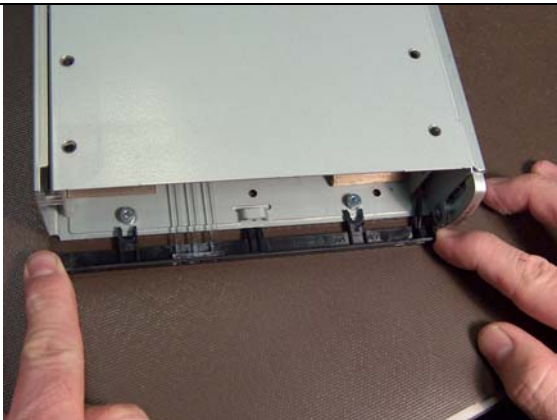
(6)



(7)



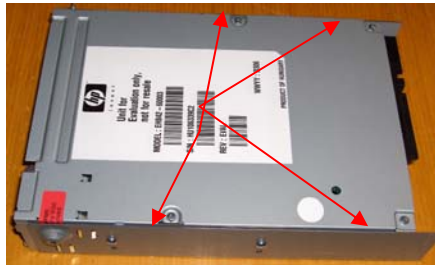
(8)



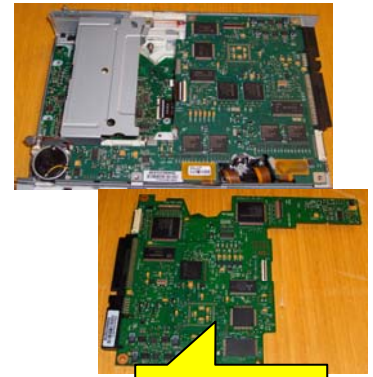
(9)



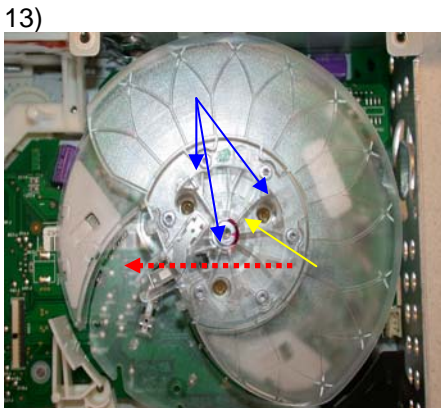
(10)
Ultrium 1, 2 & 3 half height tape drive



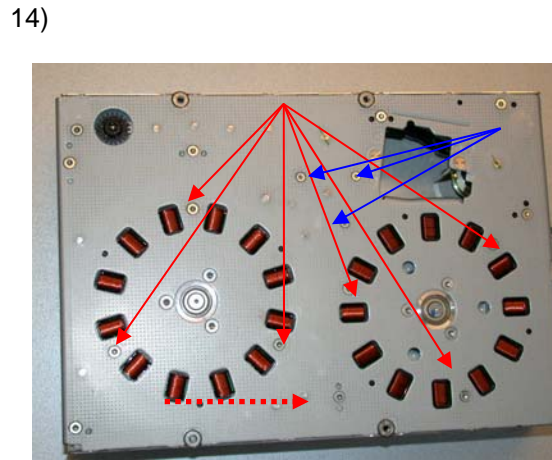
(11)
Remove 4 x T-8 screws to remove the lid.



(12)
Main PCA > 10 square cm's
Main PCA > 10 square cm's



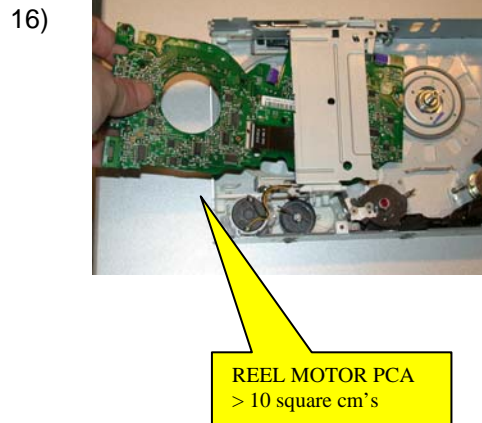
Remove the take up reel. 3 x T-5 screws and 1 x T-10.



Remove 6 x T-8 and 3 x T-5 screws from rear of mech.



Move carrier approximately 2cm into the mechanism – direction of the arrow.



Reel motor PCA > 10 square cm's.