

## Product End-of-Life Disassembly Instructions

**Product Category: Servers**

**Marketing Name / Model**

[List multiple models if applicable.]

HP ProLiant EC200a

Name / Model #2

Name / Model #3

Name / Model #4

Name / Model #5

**Purpose:** The document is intended for use by end-of-life recyclers or treatment facilities. It provides the basic instructions for the disassembly of HPE products to remove components and materials requiring selective treatment, as defined by EU directive 2002/96/EC, Waste Electrical and Electronic Equipment (WEEE).

### 1.0 Items Requiring Selective Treatment

1.1 Items listed below are classified as requiring selective treatment.

1.2 Enter the quantity of items contained within the product which require selective treatment in the right column, as applicable.

| Item Description   | Notes   | Quantity of items included in product |
|--|---|---------------------------------------|
| Printed Circuit Boards (PCB) or Printed Circuit Assemblies (PCA)   | With a surface greater than 10 sq cm<br>System board 1, small board 3                         | 4                                     |
| Batteries  | All types including standard alkaline and lithium coin or button style batteries<br>Coin cell | 1                                     |
| Mercury-containing components  | For example, mercury in lamps, display backlights, scanner lamps, switches, batteries         | 0                                     |
| Liquid Crystal Displays (LCD) with a surface greater than 100 sq cm  | Includes background illuminated displays with gas discharge lamps                             | 0                                     |
| Cathode Ray Tubes (CRT)  |   | 0                                     |
| Capacitors / condensers (Containing PCB/PCT)   |   |                                       |
| Electrolytic Capacitors / Condensers measuring greater than 2.5 cm in diameter or height   |   | 0                                     |
| External electrical cables and cords   |   | 0                                     |
| Gas Discharge Lamps  |   | 0                                     |
| Plastics containing Brominated Flame Retardants weighing > 25 grams (not including PCBs or PCAs already listed as a separate item above) |   | 0                                     |
| Components and parts containing toner and ink, including liquids, semi-liquids (gel/paste) and toner                                     | Include the cartridges, print heads, tubes, vent chambers, and service stations.              | 0                                     |
| Components and waste containing asbestos   |   | 0                                     |
| Components, parts and materials containing refractory ceramic fibers   |   | 0                                     |

| Item Description  | Notes | Quantity of items included in product |
|---|-------|---------------------------------------|
| Components, parts and materials containing radioactive substances |       | 0                                     |

## 2.0 Tools Required

List the type and size of the tools that would typically be used to disassemble the product to a point where components and materials requiring selective treatment can be removed.

| Tool Description   | Tool Size (if applicable) |
|--------------------|---------------------------|
| Torx Driver        | T-15                      |
| Philps screwdriver |                           |
| Hex socket         |                           |
| Description #4     |                           |
| Description #5     |                           |

## 3.0 Product Disassembly Process

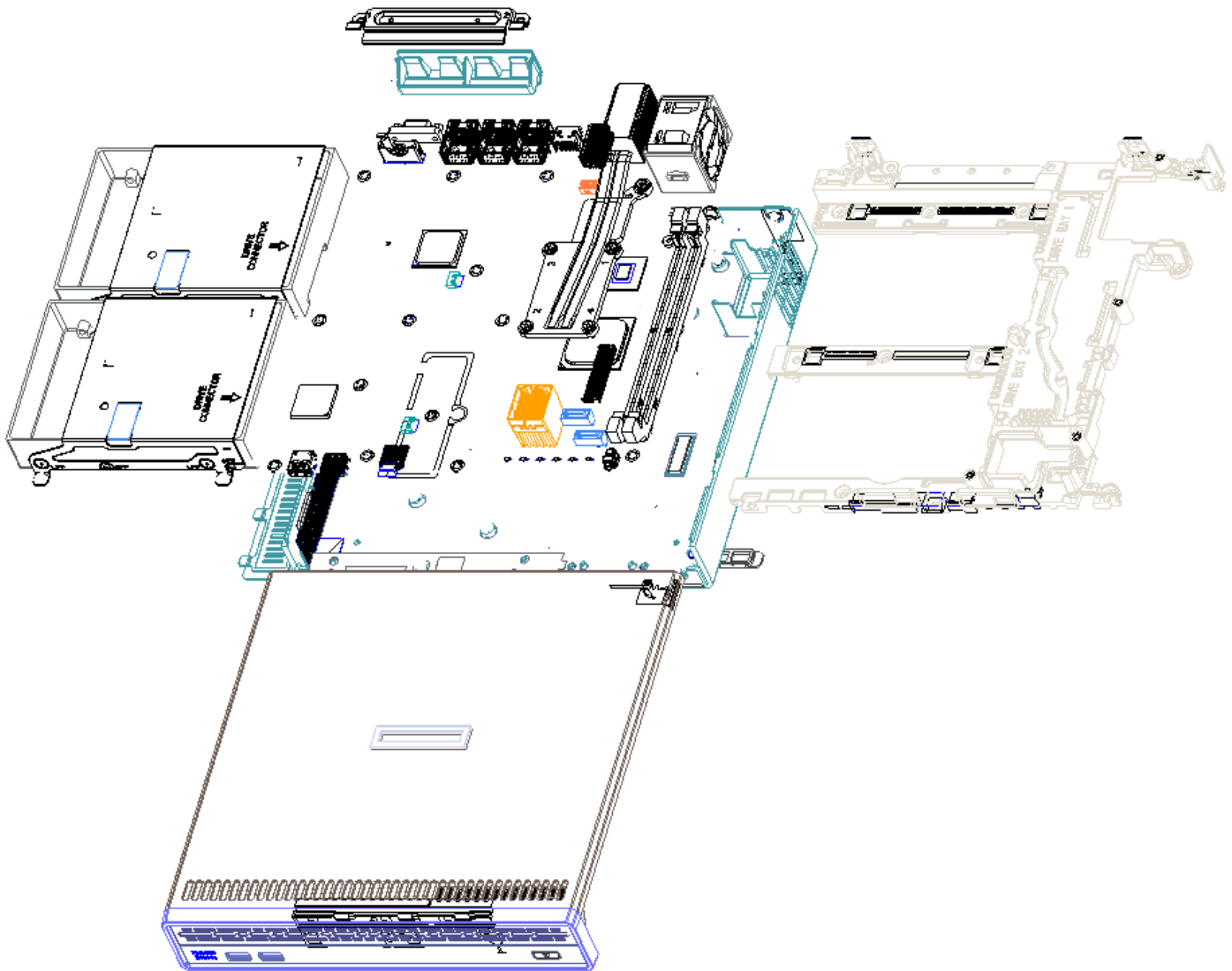
3.1 List the basic steps that should typically be followed to remove components and materials requiring selective treatment:

1. System Board Battery - Remove the side panel and remove the battery from the system board.
2. Locate plastic parts with metal coating
- 3.
- 4.
- 5.
- 6.
- 7.
- 8.

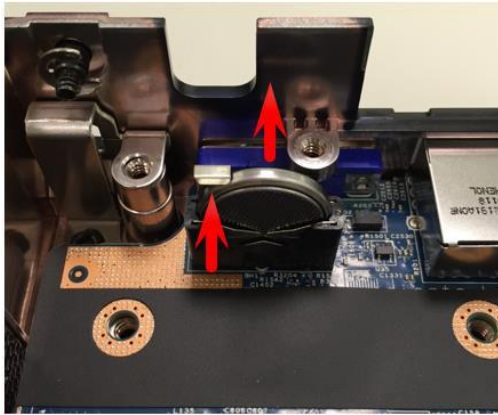
3.2 Optional Graphic. If the disassembly process is complex, insert a graphic illustration below to identify the items contained in the product that require selective treatment (with descriptions and arrows identifying locations)

**Attachment 1 – System exploding drawing**  
**Attachment 2 –Remove Battery**  
**Attachment 3- Plastic with metal coating**  
**Attachment 4- Plastic with metal coating**

## Attachment 1- System Exploding drawing



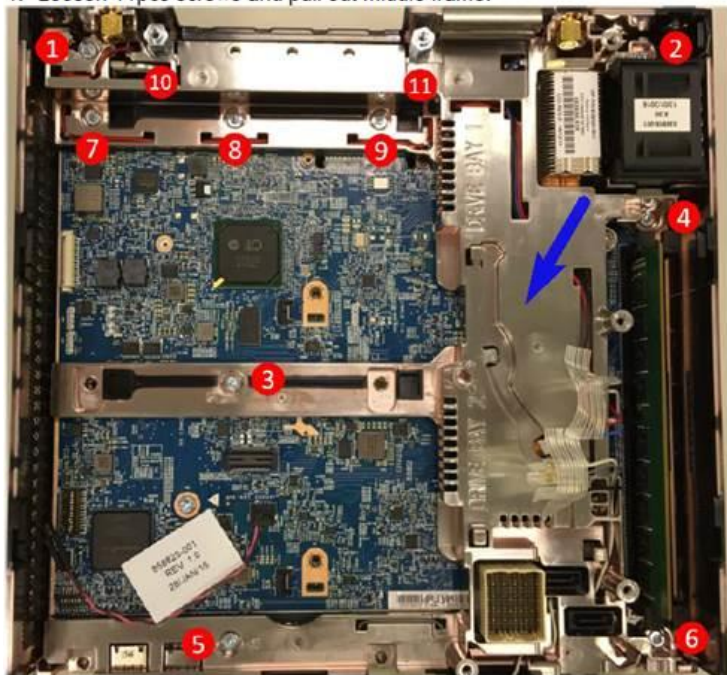
Attachment 2- Locate Coin cell battery.- **Remove Battery**



Attachment 3- Plastic with metal coating- Blue Arrow. Dispose of properly

## Remove Middle Frame

1. Loosen 11pcs screws and pull out middle frame.



Attachment 4- Plastic with metal coating- Blue Arrow. Dispose of properly

