



Product End-of-Life Disassembly Instructions

Product Category: External Options

Marketing Name / Model

[List multiple models if applicable.]

T1500 G3 UPS NA / AF450A

T1500 G3 UPS INTL / AF451A

T1000J UPS / AF457A

T1500J UPS / AF458A

Purpose: The document is intended for use by end-of-life recyclers or treatment facilities. It provides the basic instructions for the disassembly of HP products to remove components and materials requiring selective treatment, as defined by EU directive 2002/96/EC, Waste Electrical and Electronic Equipment (WEEE).

1.0 Items Requiring Selective Treatment

1.1 Items listed below are classified as requiring selective treatment.

1.2 Enter the quantity of items contained within the product which require selective treatment in the right column, as applicable.

Item Description	Notes	Quantity of items included in product
Printed Circuit Boards (PCB) or Printed Circuit Assemblies (PCA)	With a surface greater than 10 sq cm	3
Batteries	All types including standard alkaline and lithium coin or button style batteries	3
Mercury-containing components	For example, mercury in lamps, display backlights, scanner lamps, switches, batteries	0
Liquid Crystal Displays (LCD) with a surface greater than 100 sq cm	Includes background illuminated displays with gas discharge lamps	0
Cathode Ray Tubes (CRT)		0
Capacitors / condensers (Containing PCB/PCT)	X capacitors, Y capacitors	4
Electrolytic Capacitors / Condensers measuring greater than 2.5 cm in diameter or height		3
External electrical cables and cords		1
Gas Discharge Lamps		0
Plastics containing Brominated Flame Retardants weighing > 25 grams (not including PCBs or PCAs already listed as a separate item above)		0
Components and parts containing toner and ink,	Include the cartridges, print heads, tubes, vent	0

including liquids, semi-liquids (gel/paste) and toner	chambers, and service stations.	
Components and waste containing asbestos		0
Components, parts and materials containing refractory ceramic fibers		0
Components, parts and materials containing radioactive substances		0

2.0 Tools Required

List the type and size of the tools that would typically be used to disassemble the product to a point where components and materials requiring selective treatment can be removed.

Tool Description	Tool Size (if applicable)
Philips Screw Driver	#2
Torx Head Screw Driver	Large
Wrench	M4

3.0 Product Disassembly Process

3.1 List the basic steps that should typically be followed to remove components and materials requiring selective treatment:

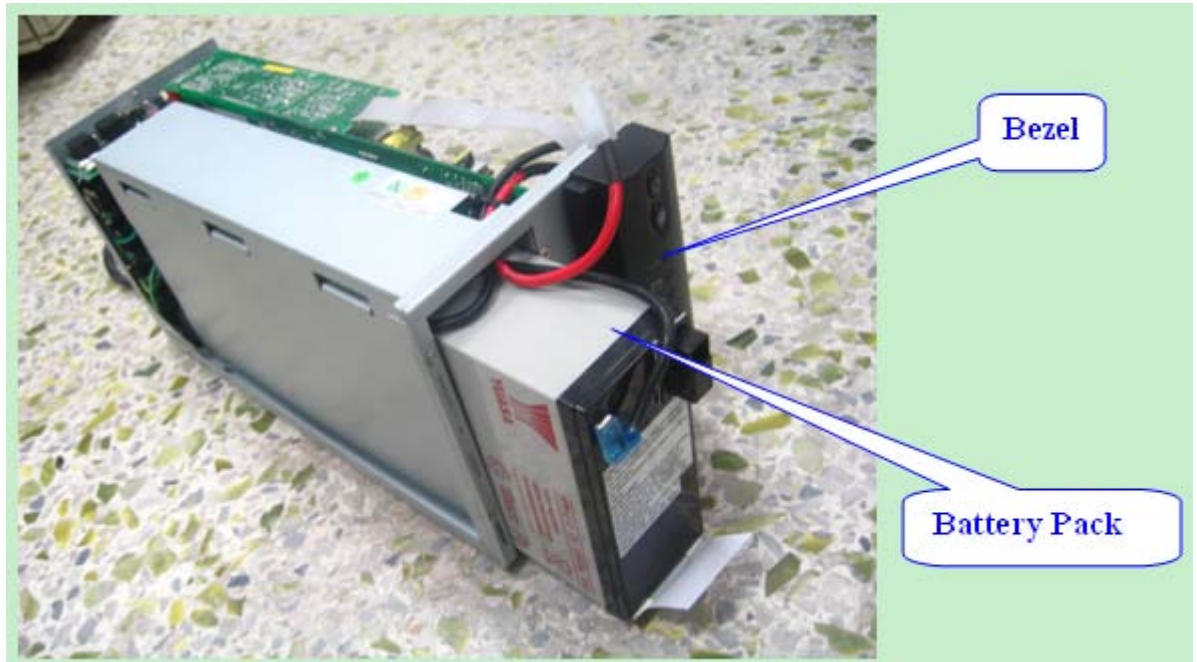
1. Bezel-Manual removal
2. Removal the battery fixed plate
3. Battery connector-Manual disconnection
4. Removal of cover with Hex head screw drive on the rear of the unit
5. Pull the battery pack out from the battery room,disconnect the battery pack with PCB
6. Removal the rear panel with Philips Screw Driver, disconnect the wire between the rear panel and PCB
7. Removal the PCB from the main frame with Philips screw driver
8. Remove the AVR from the main frame with a M4 wrench
- 9.

3.2 Optional Graphic. If the disassembly process is complex, insert a graphic illustration below to identify the items contained in the product that require selective treatment (with descriptions and arrows identifying locations).

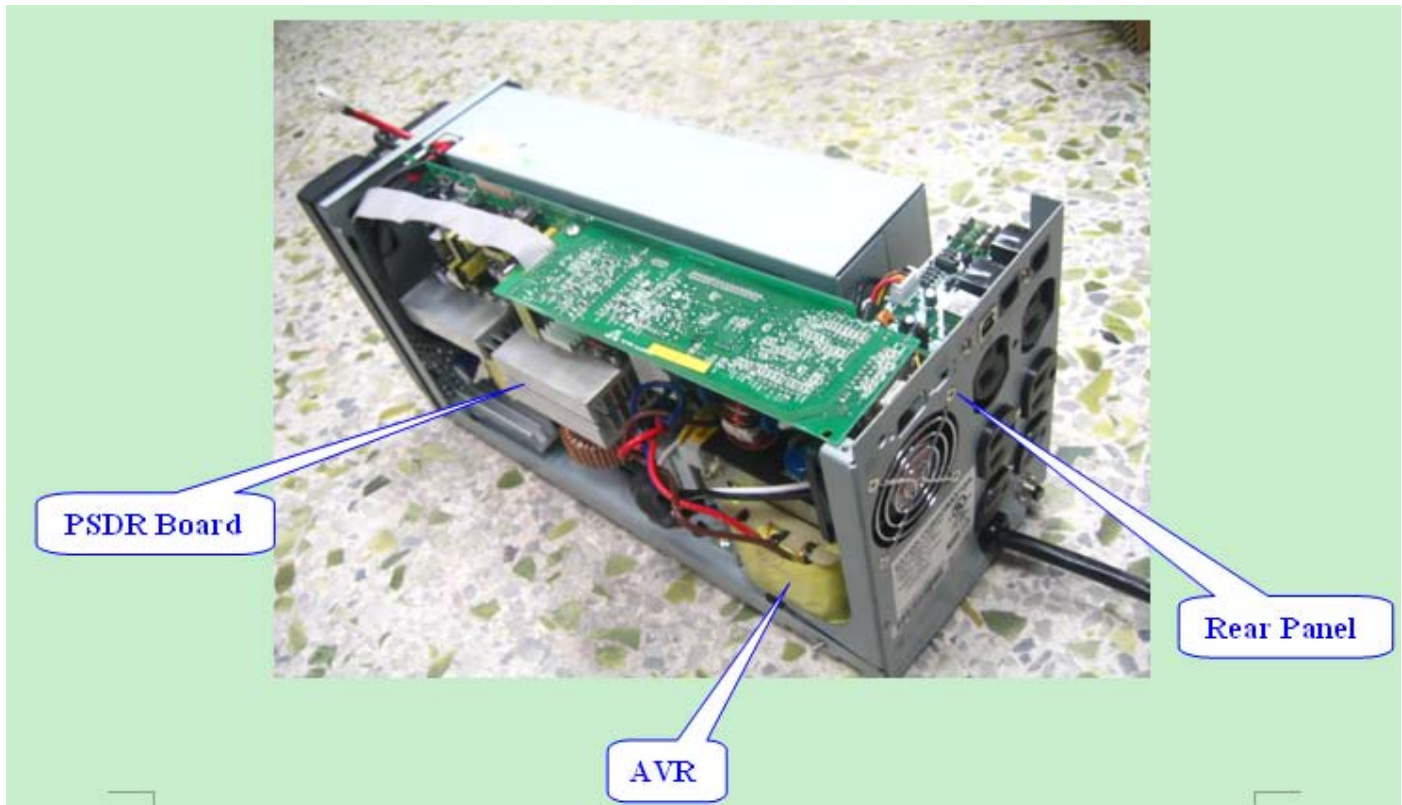
- (1) The Component location of T1000/T1500 UPS Unit
- (2) Capacitor Location(diameter over 2.5cm)
- (3) Battery Pack disassembly

(1) The Component location of T1000/T1500 UPS Unit

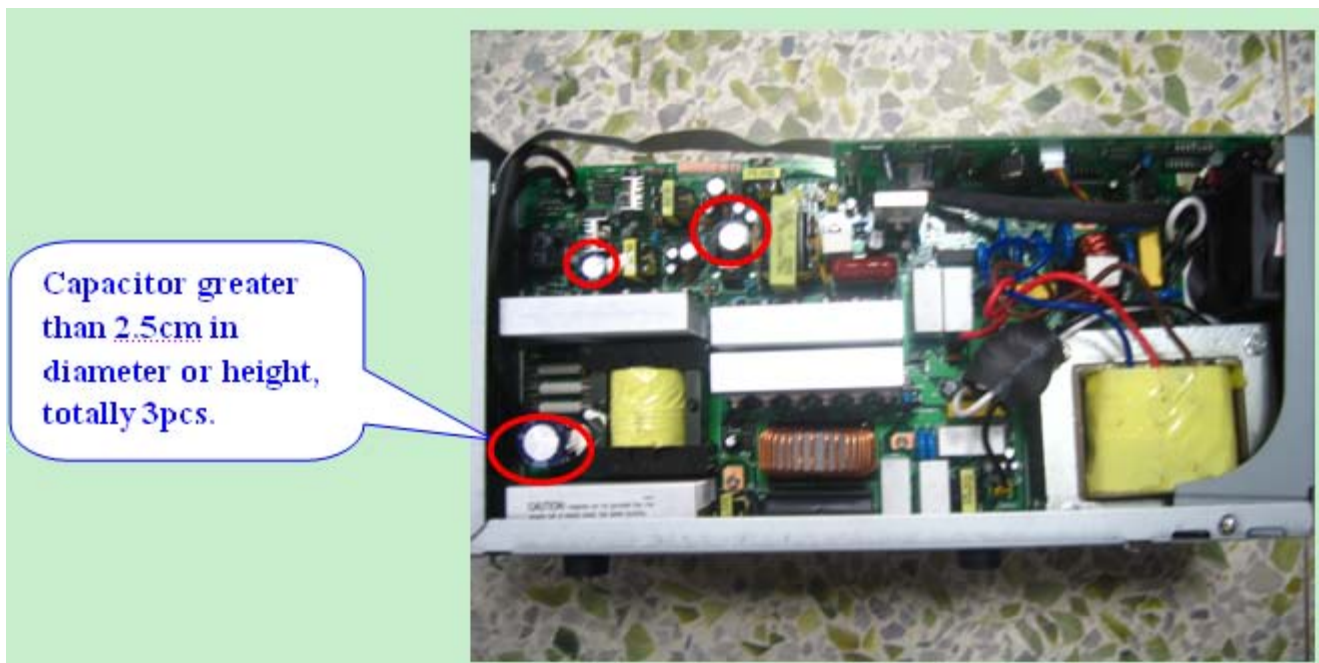
a. front side



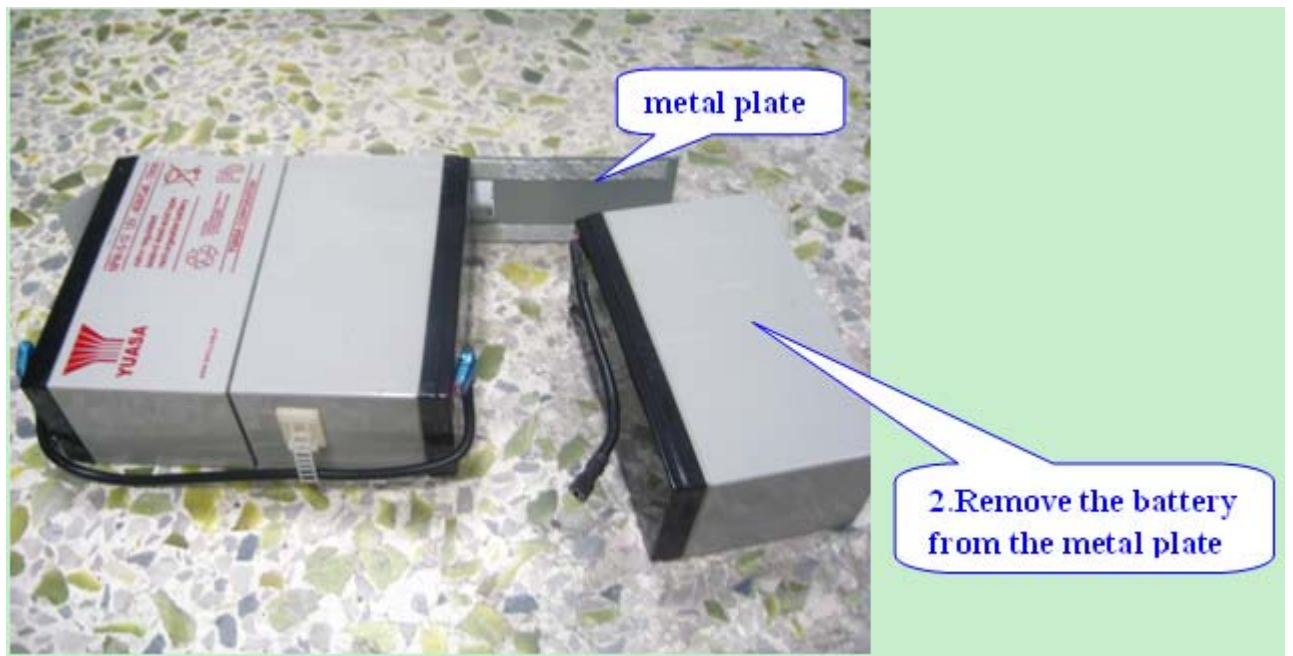
b. back side

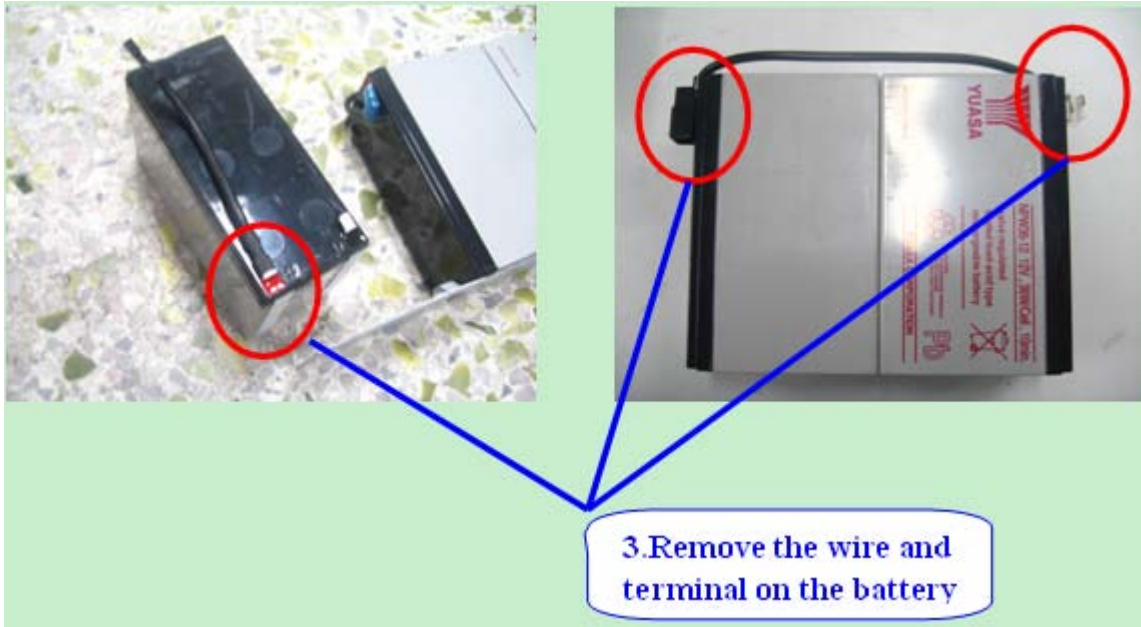


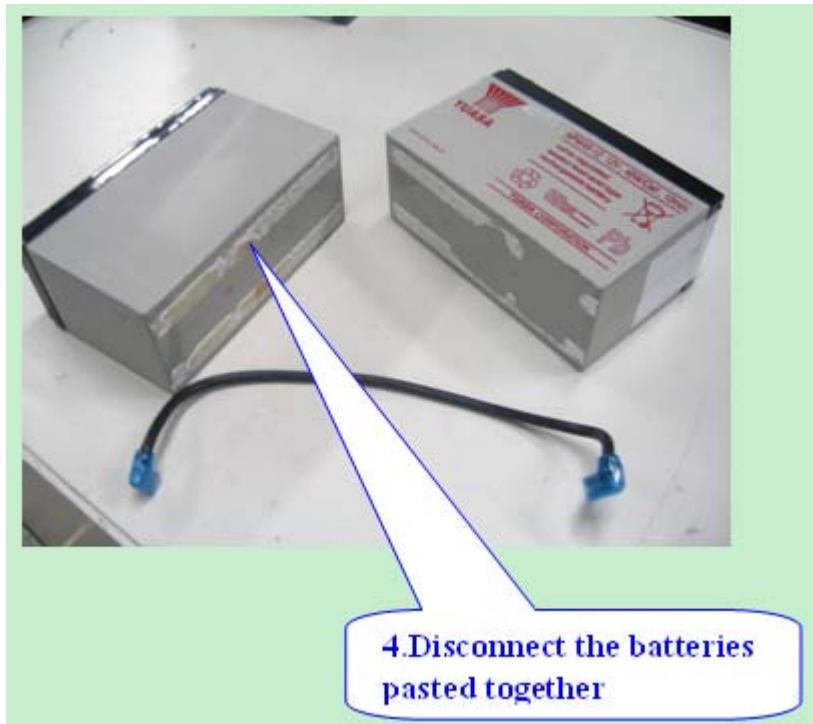
(2) Capacitor Location(diameter over 2.5cm)



(3) Battery Pack disassembly







NOTE: The battery should be properly disposed of at a local recycling/reuse or hazardous waste center.