



# Product End-of-Life Disassembly Instructions

**Product Category:** Other Products

**Marketing Name / Model**

**[List multiple models if applicable.]**

HP T1000 G4 NA/JP UPS

HP T1000 G4 INTL UPS

**Purpose:** The document is intended for use by end-of-life recyclers or treatment facilities. It provides the basic instructions for the disassembly of HP products to remove components and materials requiring selective treatment, as defined by EU directive 2002/96/EC, Waste Electrical and Electronic Equipment (WEEE).

## 1.0 Items Requiring Selective Treatment

1.1 Items listed below are classified as requiring selective treatment.

1.2 Enter the quantity of items contained within the product which require selective treatment in the right column, as applicable.

Item Description	Notes	Quantity of items included in product
Printed Circuit Boards (PCB) or Printed Circuit Assemblies (PCA)	With a surface greater than 10 sq cm PCBA	2
Batteries	All types including standard alkaline and lithium coin or button style batteries    Lead-acid battery	2
Mercury-containing components	For example, mercury in lamps, display backlights, scanner lamps, switches, batteries	0
Liquid Crystal Displays (LCD) with a surface greater than 100 sq cm	Includes background illuminated displays with gas discharge lamps	0
Cathode Ray Tubes (CRT)		0
Capacitors / condensers (Containing PCB/PCT)		0
Electrolytic Capacitors / Condensers measuring greater than 2.5 cm in diameter or height	Electrolytic Capacitors	3
External electrical cables and cords		2
Gas Discharge Lamps		0
Plastics containing Brominated Flame Retardants weighing > 25 grams (not including PCBs or PCAs already listed as a separate item above)		0
Components and parts containing toner and ink, including liquids, semi-liquids (gel/paste) and toner	Include the cartridges, print heads, tubes, vent chambers, and service stations.	0
Components and waste containing asbestos		0
Components, parts and materials containing refractory ceramic fibers		0

Components, parts and materials containing radioactive substances		0
---	--	---

## 2.0 Tools Required

List the type and size of the tools that would typically be used to disassemble the product to a point where components and materials requiring selective treatment can be removed.

Tool Description	Tool Size (if applicable)
Philips Screw Driver	#2
Torx Head Screw Driver	T10
Socket Wrench	M4

## 3.0 Product Disassembly Process

3.1 List the basic steps that should typically be followed to remove components and materials requiring selective treatment:

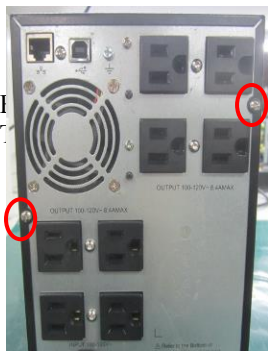
1. Disconnect all power cords, including battery connector;
2. Remove top cover;
3. Remove Front panel assy;
4. Remove battery pack;
5. Remove PCBA and TX
6. Final Disassembly
7. Remove Rubber foot Pads
- 8.
- 9.
- 10.
- 11.
- 12.
- 13.

3.2 Optional Graphic. If the disassembly process is complex, insert a graphic illustration below to identify the items contained in the product that require selective treatment (with descriptions and arrows identifying locations).

Step 1: Disconnect all input and output cords, take off front panel manually and then disconnect the battery wire.

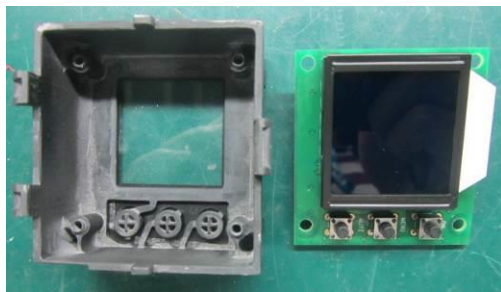


Step 2: Uninstall top cover. Take off 8pcs screws by screwdriver



PSG instructions for this template are available at [EL-MF877-01](#)

Step 3: uninstall LCD BOX manually, disconnect the flat wire, and then take off 2pcs screws by screw driver, remove LCD from LCD BOX.



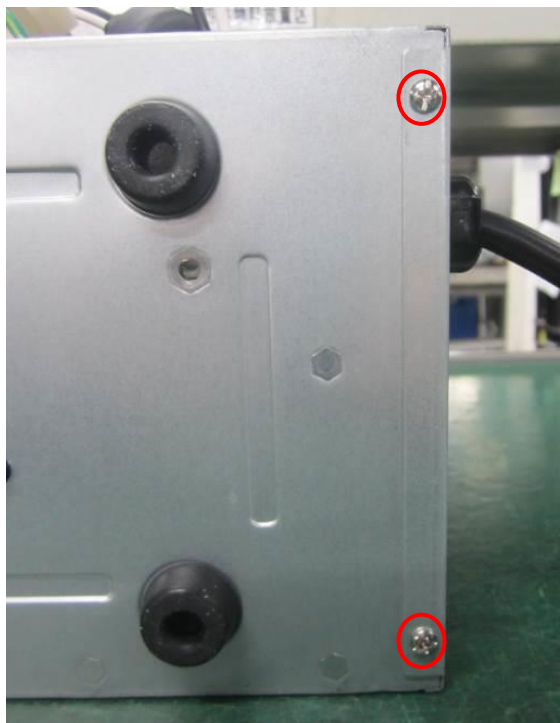
Step 4: Uninstall battery metal cover by removing screw as below, take out battery



pack.



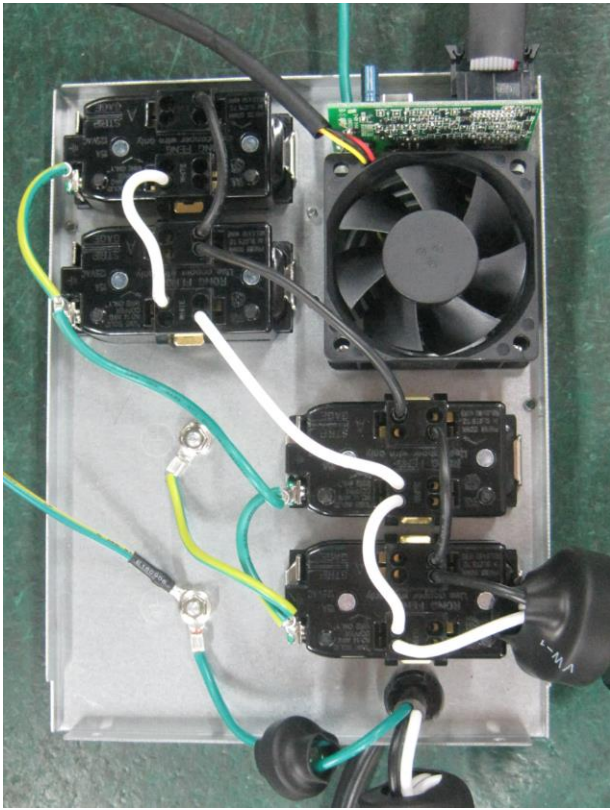
Step 5: Remove 4 screws on bottom and rear side, disconnect all wires, take off rear panel assy.

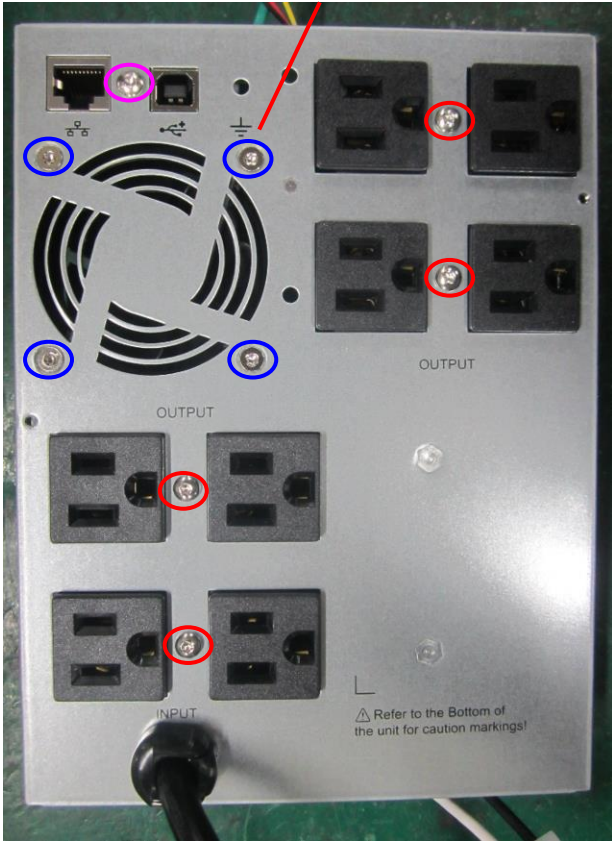




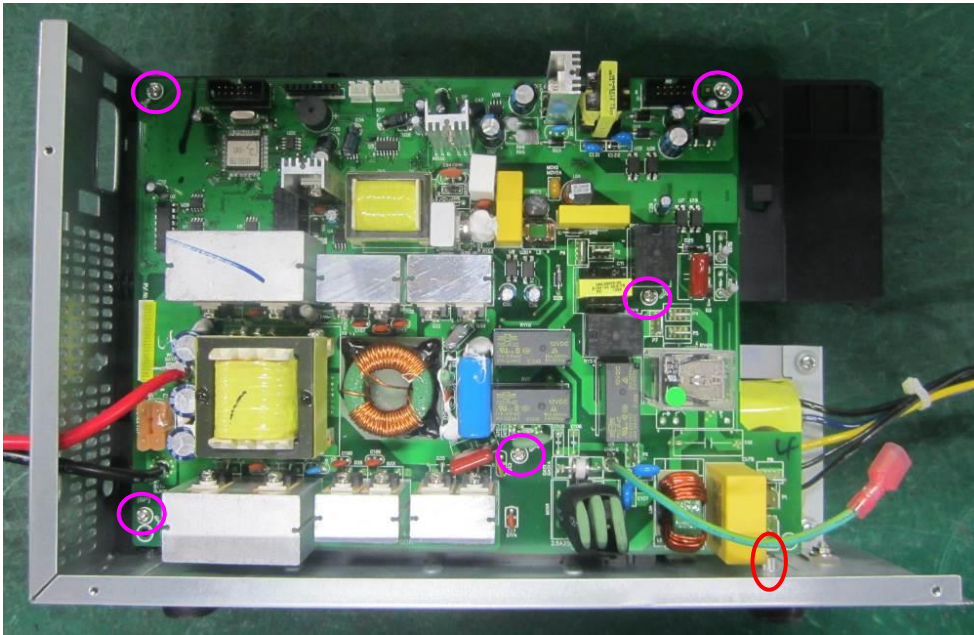


Step 6: Remove screws as below picture, uninstall inlets, Fan, USB & PCBA.





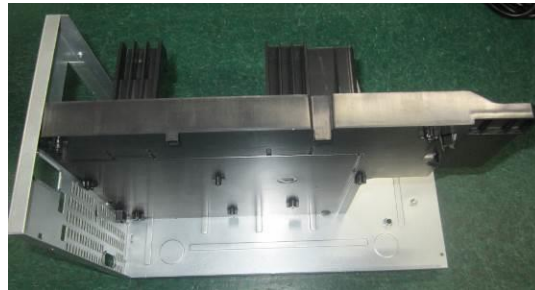
Step 7: Disconnect wires, remove screws as below showed, take out main PCBA.



Step 8: Remove screws and uninstall TX.



Step 9: Remove screws from bottom and front side, uninstall the plastic battery bracket.



Step 10: Take off rubber foot PADS manually.

