



# Product End-of-Life Disassembly Instructions

**Product Category:** Other Products

**Marketing Name / Model**

[List multiple models if applicable.]

HP R/T3000 G4 ERM

**Purpose:** The document is intended for use by end-of-life recyclers or treatment facilities. It provides the basic instructions for the disassembly of HP products to remove components and materials requiring selective treatment, as defined by EU directive 2002/96/EC, Waste Electrical and Electronic Equipment (WEEE).

## 1.0 Items Requiring Selective Treatment

1.1 Items listed below are classified as requiring selective treatment.

1.2 Enter the quantity of items contained within the product which require selective treatment in the right column, as applicable.

Item Description	Notes	Quantity of items included in product
Printed Circuit Boards (PCB) or Printed Circuit Assemblies (PCA)	With a surface greater than 10 sq cm	1
Batteries	All types including standard alkaline and lithium coin or button style batteries	12
Mercury-containing components	For example, mercury in lamps, display backlights, scanner lamps, switches, batteries	
Liquid Crystal Displays (LCD) with a surface greater than 100 sq cm	Includes background illuminated displays with gas discharge lamps	
Cathode Ray Tubes (CRT)		
Capacitors / condensers (Containing PCB/PCT)		
Electrolytic Capacitors / Condensers measuring greater than 2.5 cm in diameter or height		
External electrical cables and cords		
Gas Discharge Lamps		
Plastics containing Brominated Flame Retardants weighing > 25 grams (not including PCBs or PCAs already listed as a separate item above)		
Components and parts containing toner and ink, including liquids, semi-liquids (gel/paste) and toner	Include the cartridges, print heads, tubes, vent chambers, and service stations.	
Components and waste containing asbestos		
Components, parts and materials containing refractory ceramic fibers		

Components, parts and materials containing radioactive substances		
---	--	--

## 2.0 Tools Required

List the type and size of the tools that would typically be used to disassemble the product to a point where components and materials requiring selective treatment can be removed.

Tool Description	Tool Size (if applicable)
Star Head Screw Driver	M3
Cross Head Screw Driver	M3,M4
Plastic Nipper	Normal
Nut Driver	M4
Electric Iron	Normal

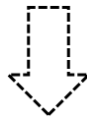
## 3.0 Product Disassembly Process

3.1 List the basic steps that should typically be followed to remove components and materials requiring selective treatment:

1. Remove the middle bezel and left panel.
2. Loosen the screws fixing the battery door and right panel, and then remove the battery door and right panel.
3. Loosen the screws fixing the top cover, and remove the top cover.
4. Disconnect the battery cables, and wrap the cable terminals with insulating tape.
5. Loosen the nuts fixing the battery brackets, and remove the battery brackets.
6. Stand the batteries, and disconnect the cables connecting to Fuse Board and rear panel ASSY, and then remove the batteries.
7. Loosen the screws fixing the cables on the Fuse Board, and loosen the screws fixing the Fuse Board, and then remove the Fuse Board.
8. Loosen the nuts fixing the ground cable to the mainframe, and loosen the screws fixing the rear panel ASSY, and remove the rear panel assembly.
9. Disassemble the rear panel ASSY into separate parts.

3.2 Optional Graphic. If the disassembly process is complex, insert a graphic illustration below to identify the items contained in the product that require selective treatment (with descriptions and arrows identifying locations).

1. Remove the middle bezel and left panel.





2. Loosen the screws fixing the battery door and right panel, and then remove the battery door and right panel.



3. Loosen the screws fixing the top cover, and remove the top cover.



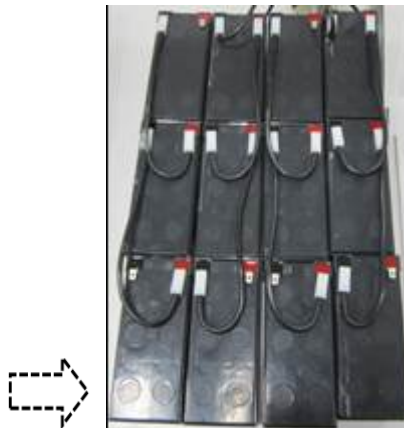
4. Disconnect the battery cables, and wrap the cable terminals with insulating tape.



5. Loosen the nuts fixing the battery brackets, and remove the battery brackets.

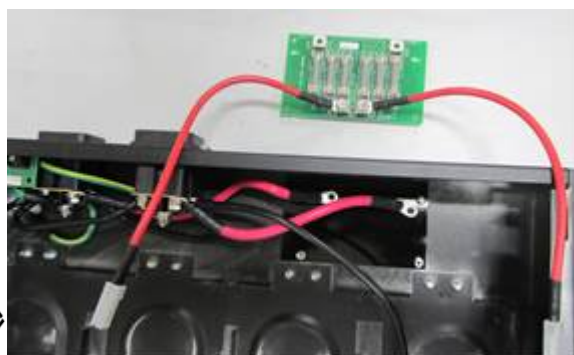
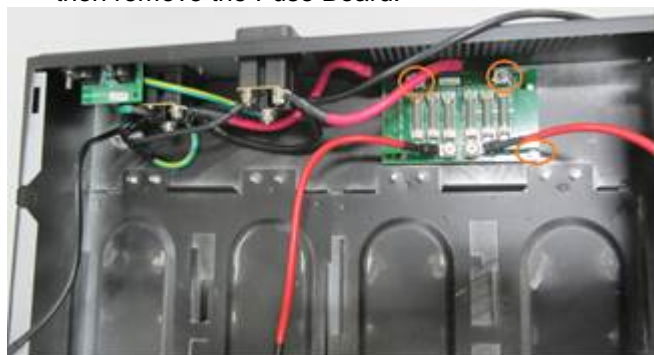


6. Stand the batteries, and disconnect the cables connecting to Fuse Board and rear panel ASSY, and then remove the batteries.





7. Loosen the screws fixing the cables on the Fuse Board, and loosen the screws fixing the Fuse Board, and then remove the Fuse Board.



8. Loosen the nuts fixing the ground cables to the mainframe, and loosen the screws fixing the rear panel ASSY, and remove the rear panel assembly.



9. Disassemble the rear panel ASSY into separate parts.

