



Product End-of-Life Disassembly Instructions

Product Category: Other Products

Marketing Name / Model

[List multiple models if applicable.]

PDU/ H5M56A HP 3.6kVA 200-240V 12out WW Bpdu 1U

Purpose: The document is intended for use by end-of-life recyclers or treatment facilities. It provides the basic instructions for the disassembly of HP products to remove components and materials requiring selective treatment, as defined by EU directive 2002/96/EC, Waste Electrical and Electronic Equipment (WEEE).

1.0 Items Requiring Selective Treatment

1.1 Items listed below are classified as requiring selective treatment.

1.2 Enter the quantity of items contained within the product which require selective treatment in the right column, as applicable.

Item Description	Notes	Quantity of items included in product
Printed Circuit Boards (PCB) or Printed Circuit Assemblies (PCA)	With a surface greater than 10 sq cm	0
Batteries	All types including standard alkaline and lithium coin or button style batteries	0
Mercury-containing components	For example, mercury in lamps, display backlights, scanner lamps, switches, batteries	0
Liquid Crystal Displays (LCD) with a surface greater than 100 sq cm	Includes background illuminated displays with gas discharge lamps	0
Cathode Ray Tubes (CRT)		0
Capacitors / condensers (Containing PCB/PCT)		0
Electrolytic Capacitors / Condensers measuring greater than 2.5 cm in diameter or height		0
External electrical cables and cords		1
Gas Discharge Lamps		0
Plastics containing Brominated Flame Retardants weighing > 25 grams (not including PCBs or PCAs already listed as a separate item above)		0
Components and parts containing toner and ink, including liquids, semi-liquids (gel/paste) and toner	Include the cartridges, print heads, tubes, vent chambers, and service stations.	0
Components and waste containing asbestos		0
Components, parts and materials containing refractory ceramic fibers		0

Components, parts and materials containing radioactive substances		0
---	--	---

2.0 Tools Required

List the type and size of the tools that would typically be used to disassemble the product to a point where components and materials requiring selective treatment can be removed.

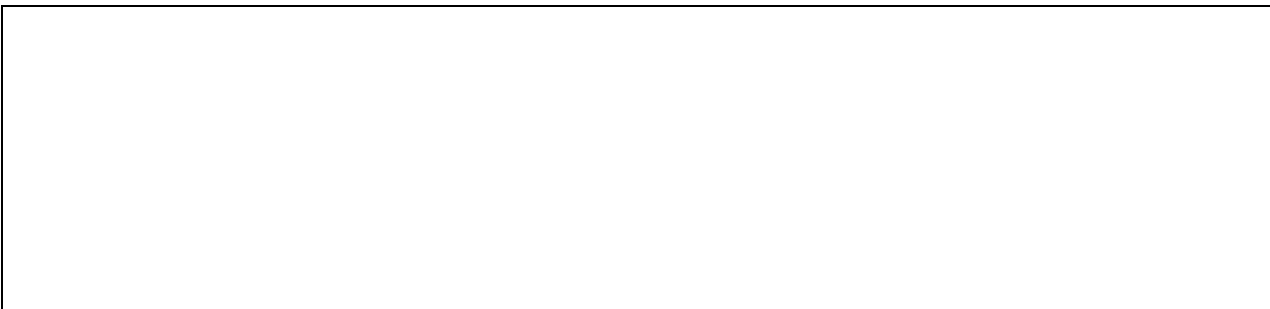
Tool Description	Tool Size (if applicable)
Philips Screw Driver	#2
Torx Driver	T10
Slot type Screw Driver	Medium
Hexagon wrench	3.5mm

3.0 Product Disassembly Process

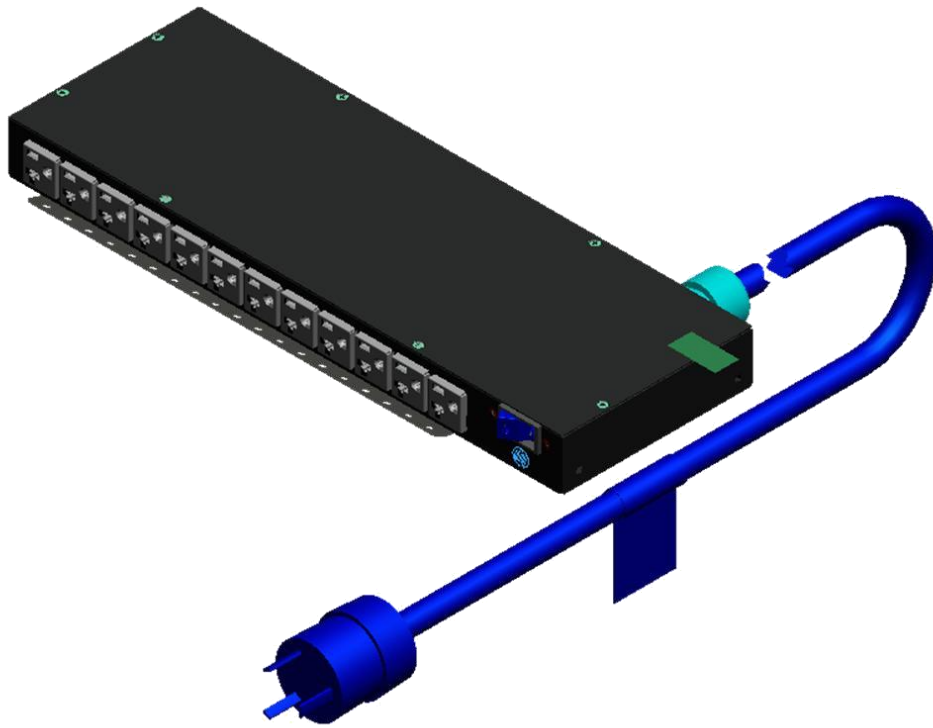
3.1 List the basic steps that should typically be followed to remove components and materials requiring selective treatment:

1. Remove 2 screws and locker bracket
2. Remove 8 screws and case cover
3. Remove hexagon nut and pull out all the inside wiring harnesses
4. If needed,remove cable and cable gland
5. Remove 2 screws for the breakerand breaker
6. Remove all the outlets
- 7.
- 8.
- 9.

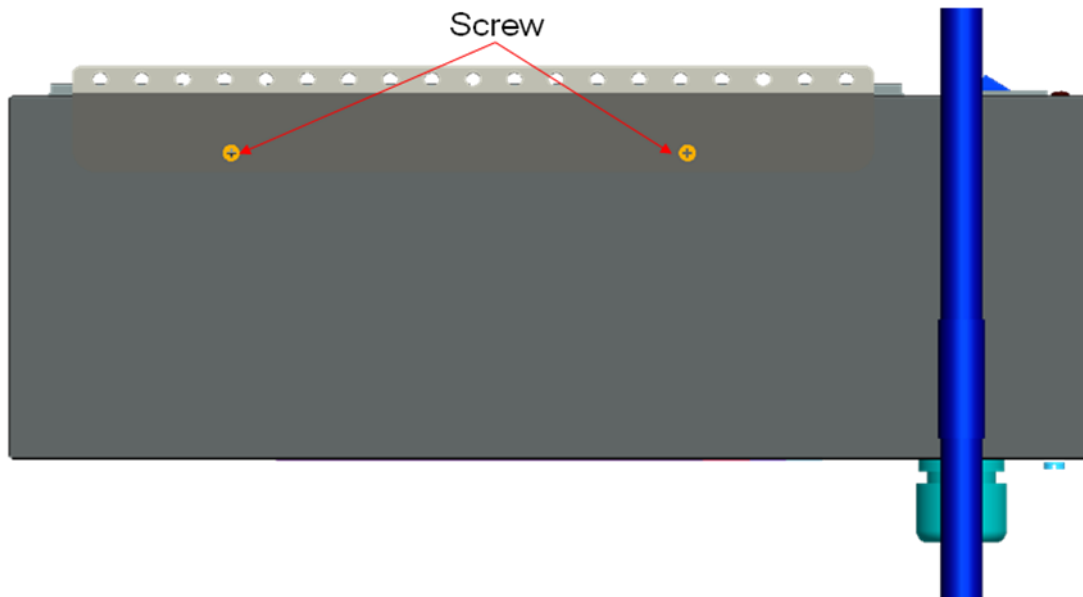
3.2 Optional Graphic. If the disassembly process is complex, insert a graphic illustration below to identify the items contained in the product that require selective treatment (with descriptions and arrows identifying locations).

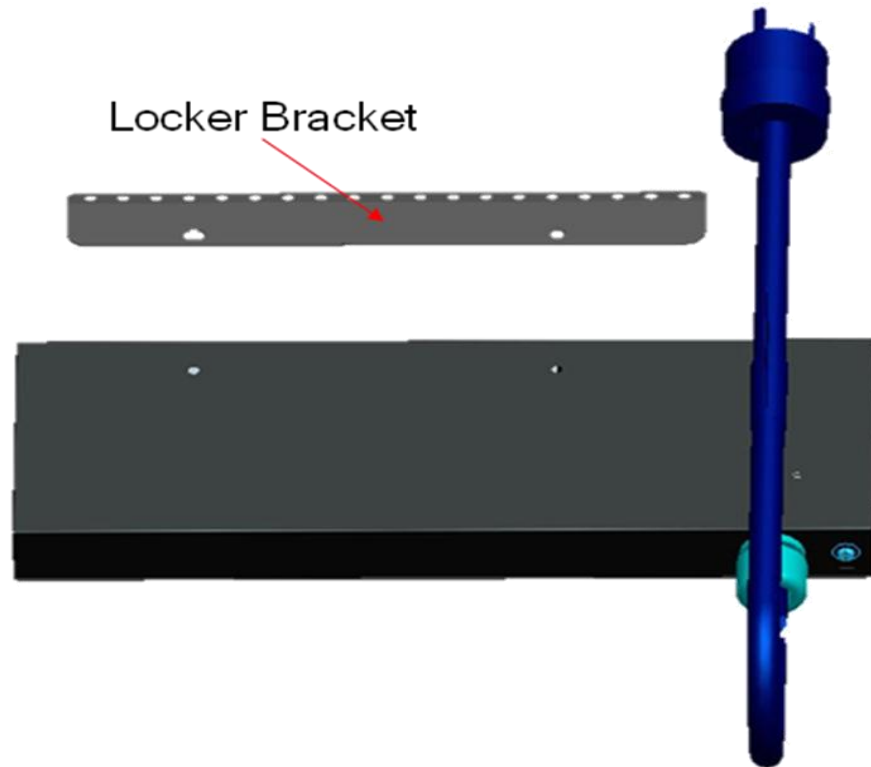


The Disassembly Procedure

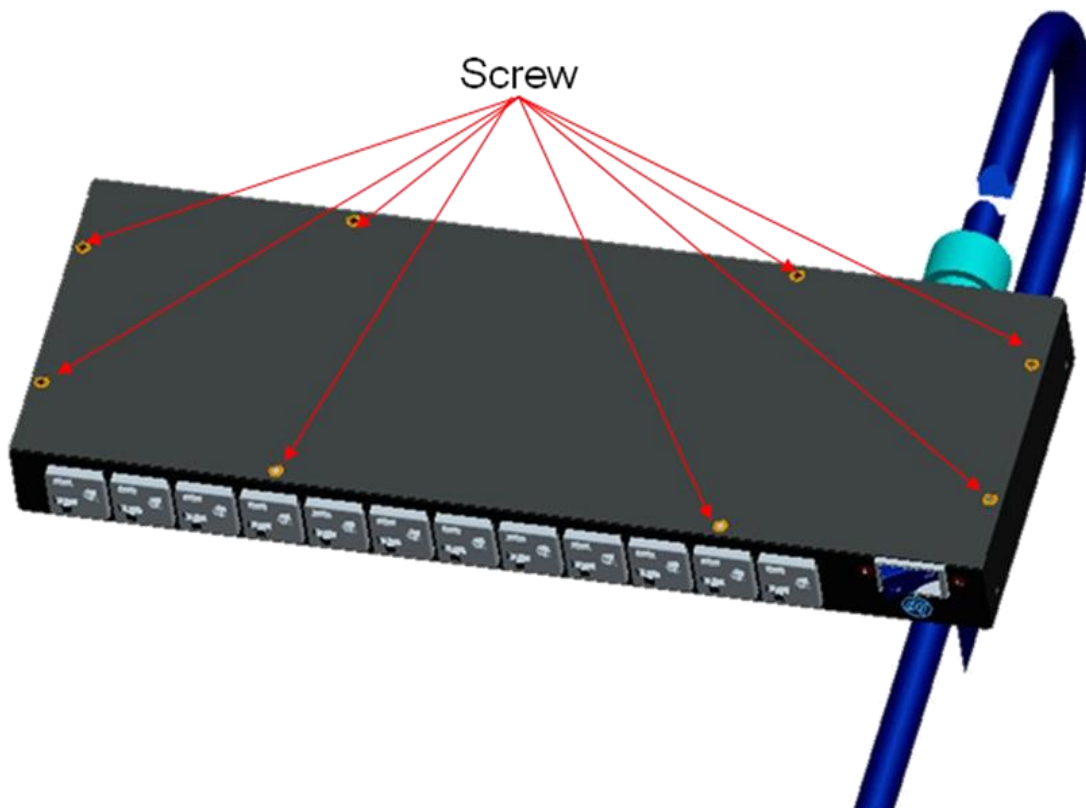


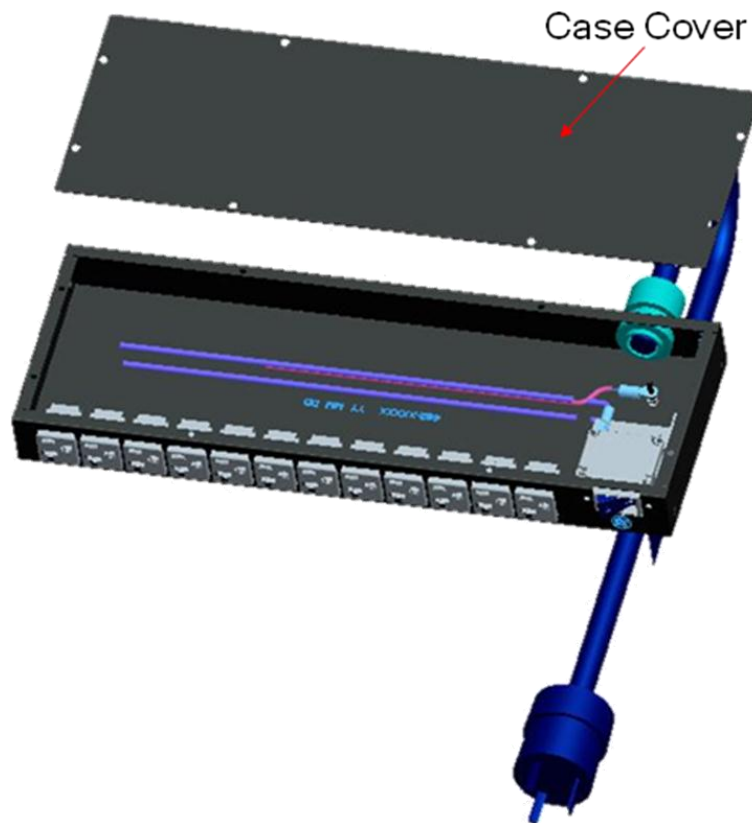
1. Remove 2 screws and locker bracket



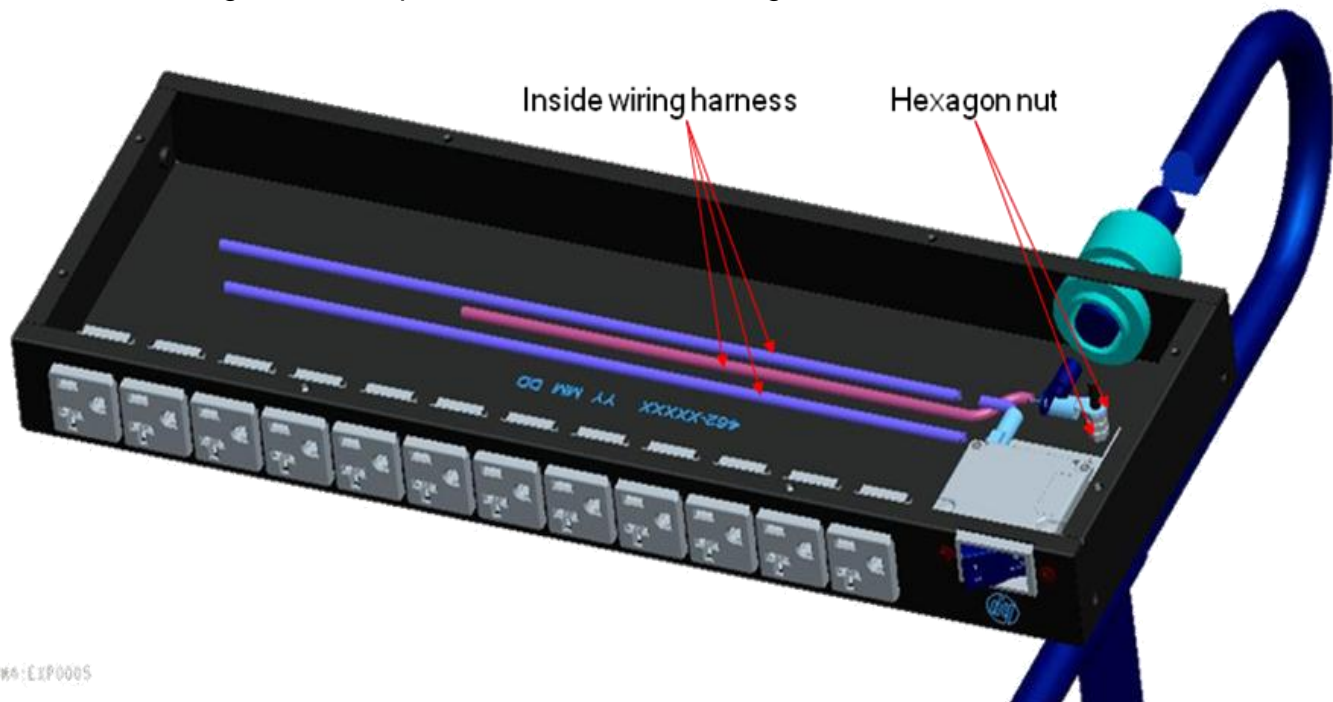


2. Remove 8 screws and case cover



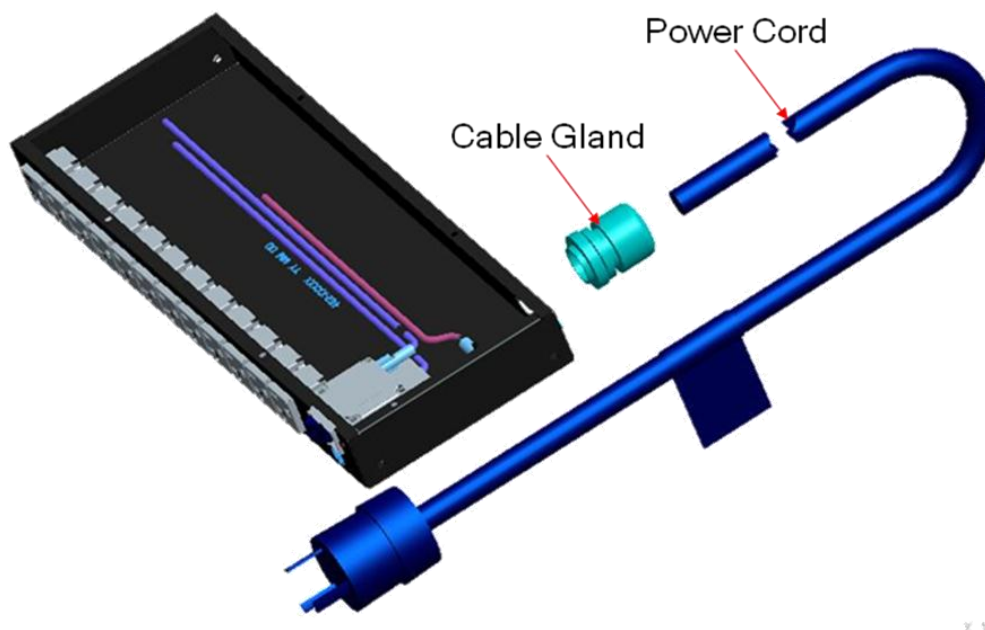


3. Remove hexagon nut and pull-out all the inside wiring harnesses

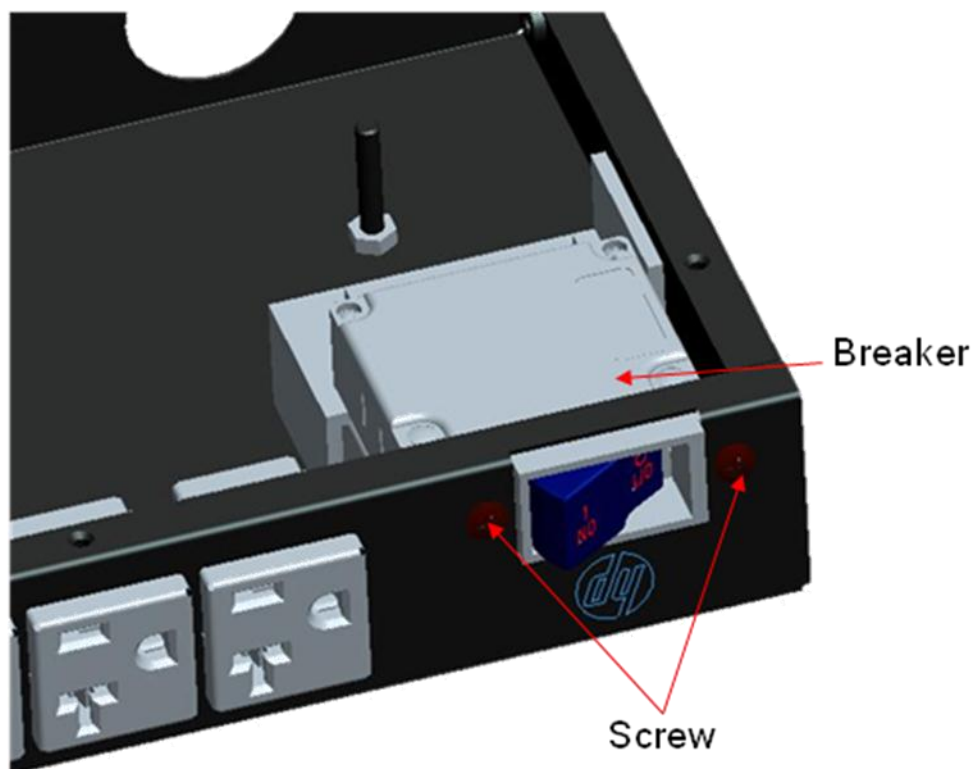


W4:EXP005

4. If needed, remove cable and cable gland



5. Remove 2 screws for the breaker and breaker



6. Remove all the outlets

