



Product End-of-Life Disassembly Instructions

Product Category: Networking Equipment

Marketing Name / Model

[List multiple models if applicable.]

AP-377

Purpose: The document is intended for use by end-of-life recyclers or treatment facilities. It provides the basic instructions for the disassembly of HP products to remove components and materials requiring selective treatment, as defined by EU directive 2002/96/EC, Waste Electrical and Electronic Equipment (WEEE).

1.0 Items Requiring Selective Treatment

1.1 Items listed below are classified as requiring selective treatment.

1.2 Enter the quantity of items contained within the product which require selective treatment in the right column, as applicable.

Item Description	Notes	Quantity of items included in product
Printed Circuit Boards (PCB) or Printed Circuit Assemblies (PCA)	With a surface greater than 10 sq cm 1 in product, 1 in power adapter	1
Batteries	All types including standard alkaline and lithium coin or button style batteries	0
Mercury-containing components	For example, mercury in lamps, display backlights, scanner lamps, switches, batteries	0
Liquid Crystal Displays (LCD) with a surface greater than 100 sq cm	Includes background illuminated displays with gas discharge lamps	0
Cathode Ray Tubes (CRT)		0
Capacitors / condensers (Containing PCB/PCT)		0
Electrolytic Capacitors / Condensers measuring greater than 2.5 cm in diameter or height		0
External electrical cables and cords		0
Gas Discharge Lamps		0
Plastics containing Brominated Flame Retardants		0
Components and parts containing toner and ink, including liquids, semi-liquids (gel/paste) and toner	Include the cartridges, print heads, tubes, vent chambers, and service stations.	0
Components and waste containing asbestos		0
Components, parts and materials containing refractory ceramic fibers		0
Components, parts and materials containing radioactive substances		0

2.0 Tools Required

List the type and size of the tools that would typically be used to disassemble the product to a point where components and materials requiring selective treatment can be removed.

Tool Description	Tool Size (if applicable)
Torx screwdriver	T10/T20/T25
Cross-head screwdriver	
Description #3	
Description #4	
Description #5	

3.0 Product Disassembly Process

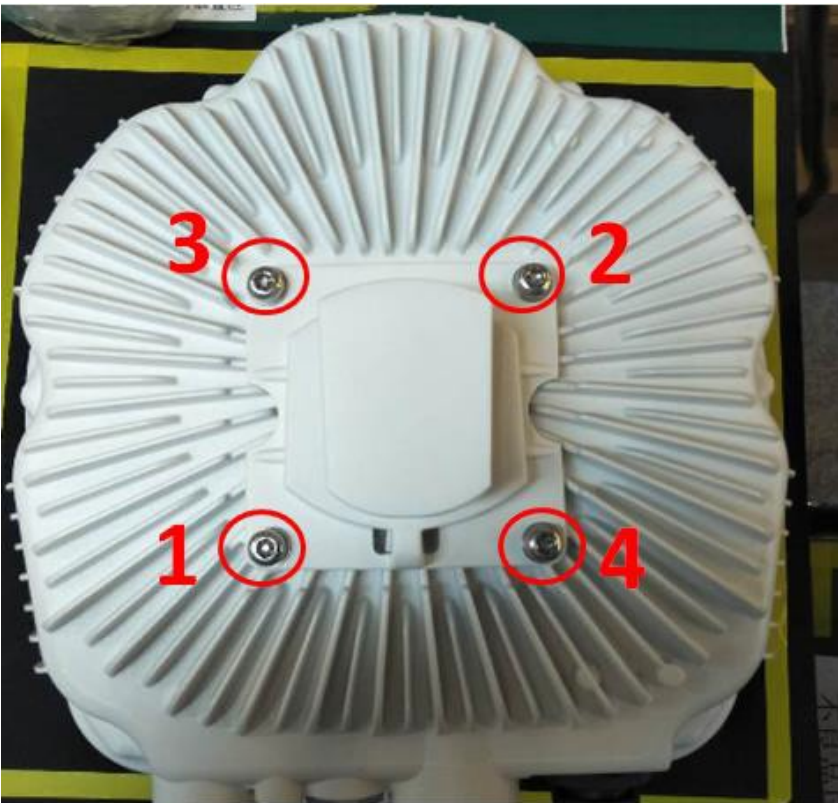
3.1 List the basic steps that should typically be followed to remove components and materials requiring selective treatment:

1. Use T25 screwdriver to remove the 4 screws on the chassis
2. Use Cross-head screwdriver to remove the 3 screws on the TOP
3. Use T25 screwdriver to remove the 6 screws on the bottom
4. Remove the antenna cable from PCBA.
5. Use Cross-head screwdriver to remove screws on the PCBA and AC Module.
- 6.
- 7.
- 8.

3.2 Graphic.

AP-377

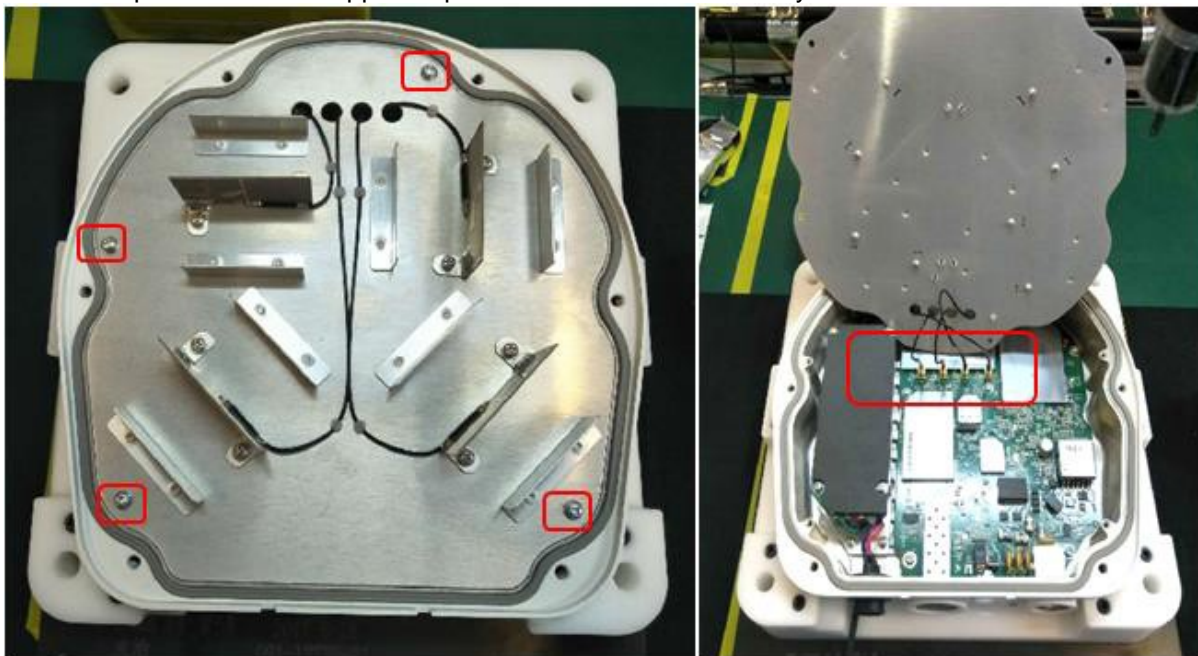
1. Use T25 screwdriver to remove the 4 screws on the holder



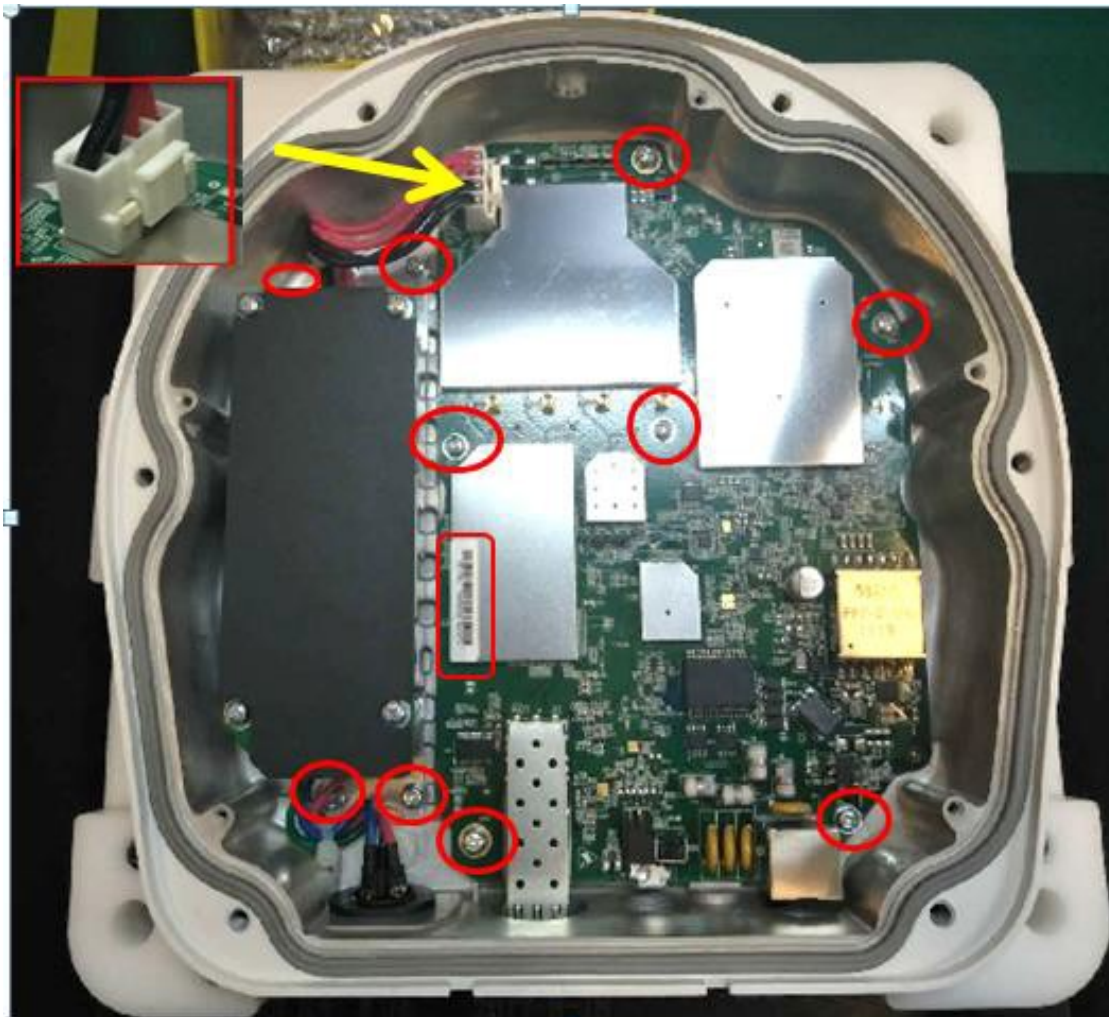
2. Use T25 screwdriver to remove the 6 screws on the Top Cover



3. Use Cross-head screwdriver to remove 4 screws on the antenna cover
Then use special fixture to support to push out antenna lock carefully.



4. Cross-head screwdriver to remove 10 screws on the PCBA and AC Module

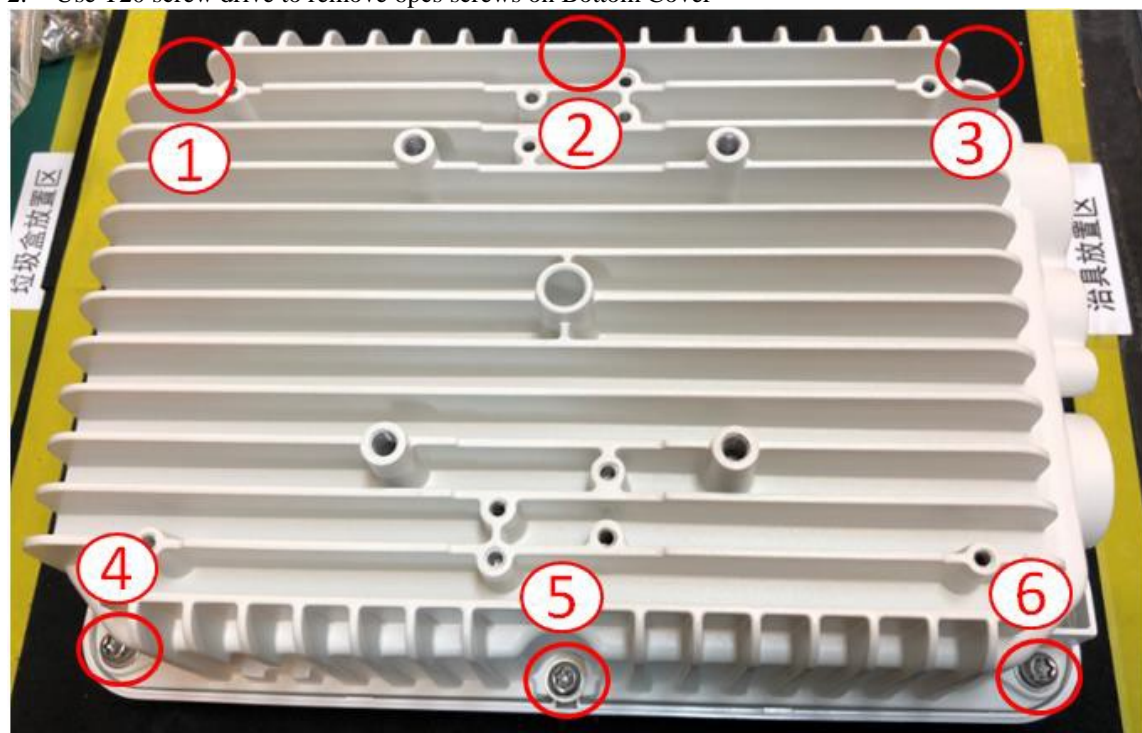


AP-318

1. Use T10 screw drive to remove 8 screws on the holder and shielding cover.



2. Use T20 screw drive to remove 6pcs screws on Bottom Cover



Use Cross-head screwdriver to remove 6 screws on the PCBA, then use special fixture to support to push out antenna lock carefully.

