

Product End-of-Life Disassembly Instructions

Product Category: Networking Equipment

Marketing Name / Model

[List multiple models if applicable.]

HPE 5980 48SFP+ 6QSFP28 Switch(JQ026A)

Purpose: The document is intended for use by end-of-life recyclers or treatment facilities. It provides the basic instructions for the disassembly of HPE products to remove components and materials requiring selective treatment, as defined by EU directive 2012/19/EC, Waste Electrical and Electronic Equipment (WEEE).

1.0 Items Requiring Selective Treatment

1.1 Items listed below are classified as requiring selective treatment.

1.2 Enter the quantity of items contained within the product which require selective treatment in the right column, as applicable.

Item Description	Notes	Quantity of items included in product
Printed Circuit Boards (PCB) or Printed Circuit Assemblies (PCA)	With a surface greater than 10 sq cm	4
Batteries	All types including standard alkaline and lithium coin or button style batteries	
Mercury-containing components	For example, mercury in lamps, display backlights, scanner lamps, switches, batteries	
Liquid Crystal Displays (LCD) with a surface greater than 100 sq cm	Includes background illuminated displays with gas discharge lamps	
Cathode Ray Tubes (CRT)		
Capacitors / condensers (Containing PCB/PCT)		
Electrolytic Capacitors / Condensers measuring greater than 2.5 cm in diameter or height		
External electrical cables and cords		
Gas Discharge Lamps		
Plastics containing Brominated Flame Retardants weighing > 25 grams (not including PCBs or PCAs already listed as a separate item above)		
Components and parts containing toner and ink, including liquids, semi-liquids (gel/paste) and toner	Include the cartridges, print heads, tubes, vent chambers, and service stations.	
Components and waste containing asbestos		
Components, parts and materials containing refractory ceramic fibers		
Components, parts and materials containing radioactive substances		

2.0 Tools Required

List the type and size of the tools that would typically be used to disassemble the product to a point where components and materials requiring selective treatment can be removed.

Tool Description	Tool Size (if applicable)
Screw driver	2#
3.0 Product Disassembly Process	

3.1 List the basic steps that should typically be followed to remove components and materials requiring selective treatment:

1. Unscrew the screws on mounting angle 1, and then remove mounting angle 1.
2. Unscrew the screws on mounting angle 2, and then remove mounting angle 2.
3. Unscrew the screws on fan-assembly3, and then remove fan-assembly3.
4. Remove the power 4.
5. Remove the filler panel 5.
6. Unscrew the screws on top cover 6, and remove top cover 6.
7. Unscrew the screws on front panel 7, and then remove front panel 7.
8. Unscrew the screws on air guide 8, and then remove air guide 8.
9. Unscrew the screws on PCB 9, and remove PCB 9.
10. Unscrew the screws on PCB 10, and remove PCB 10.
11. Remove the memory bank 11.
12. Unscrew the nuts on PCB 12, and remove PCB 12.
13. Remove the fan cable 13.
14. Unscrew the screws on PCB 14, and remove PCB 14.
15. Unscrew the screws on 3-1, and then remove 3-1.
16. Unscrew the rubber screws on 3-2, and then remove 3-2.
17. Unscrew the rubber screws on 3-3, and then remove 3-3,3-4.
18. Remove the lamp holder 3-5.

3.2 Optional Graphic. If the disassembly process is complex, insert a graphic illustration below to identify the items contained in the product that require selective treatment (with descriptions and arrows identifying locations).

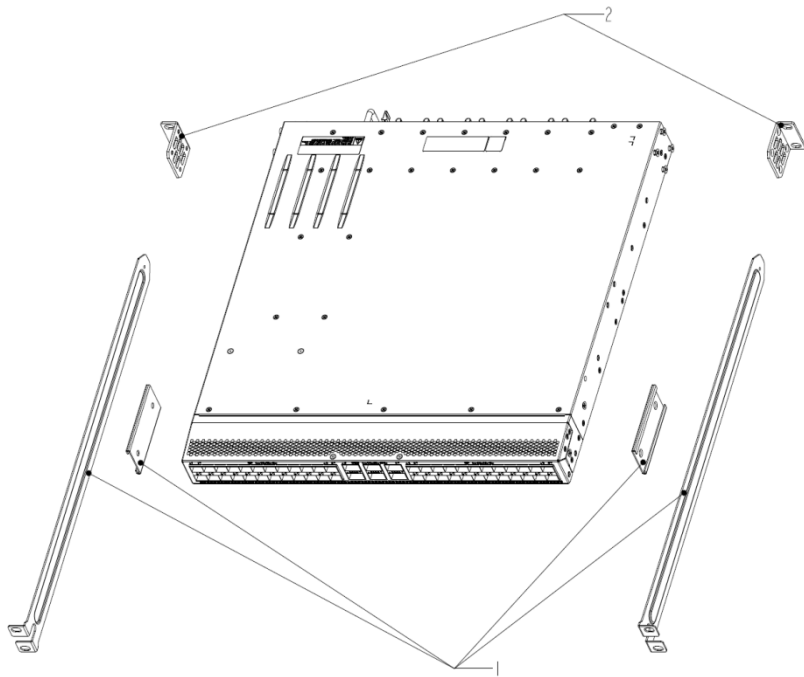


Figure 1 Remove mounting angle

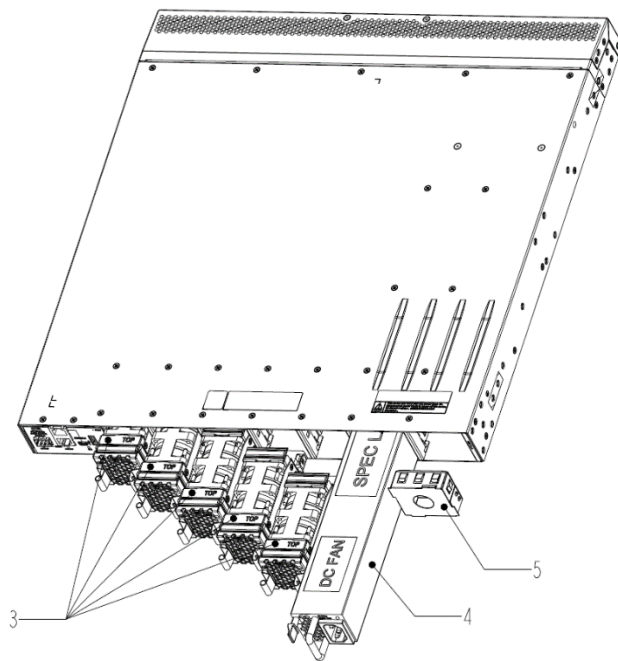


Figure 2 Rear of product

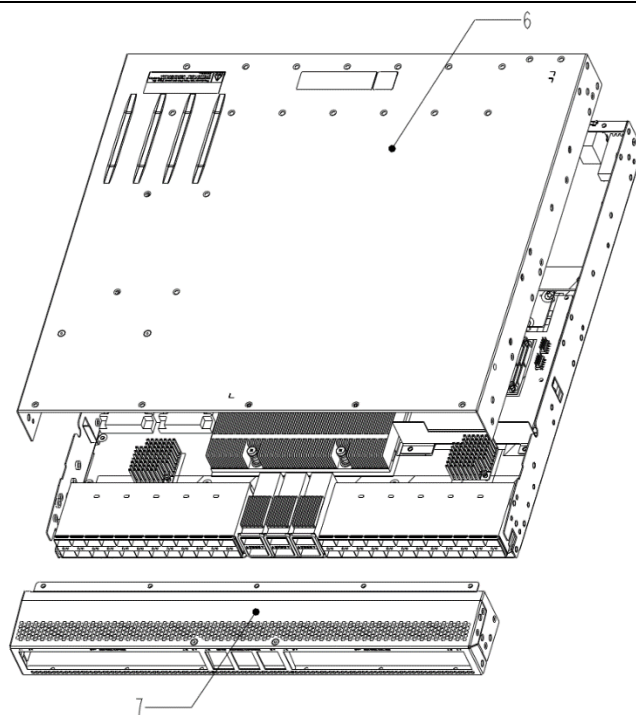


Figure 3 Treatments to the product

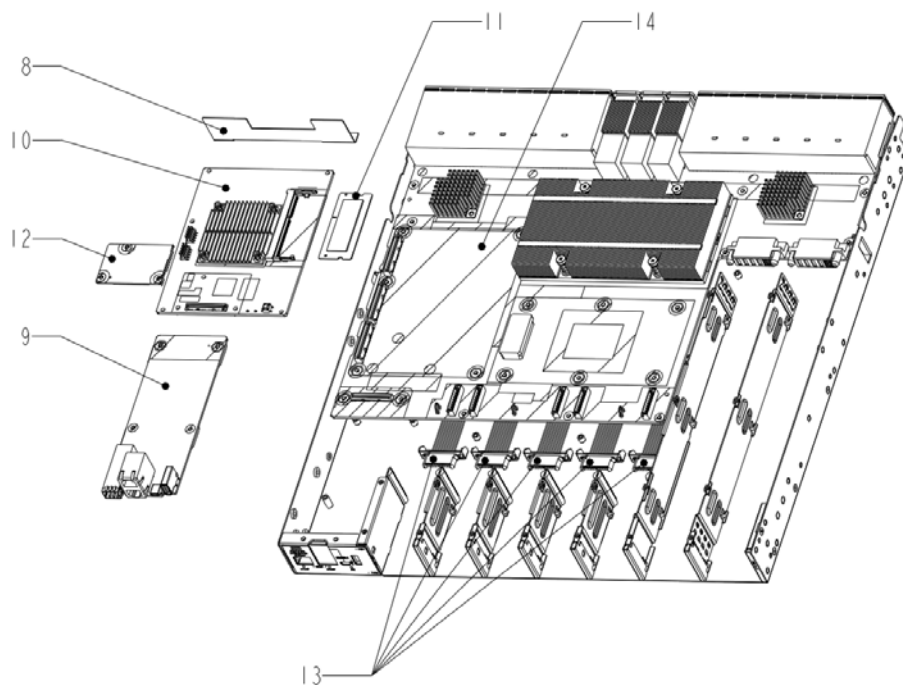


Figure 4 Treatments to the product

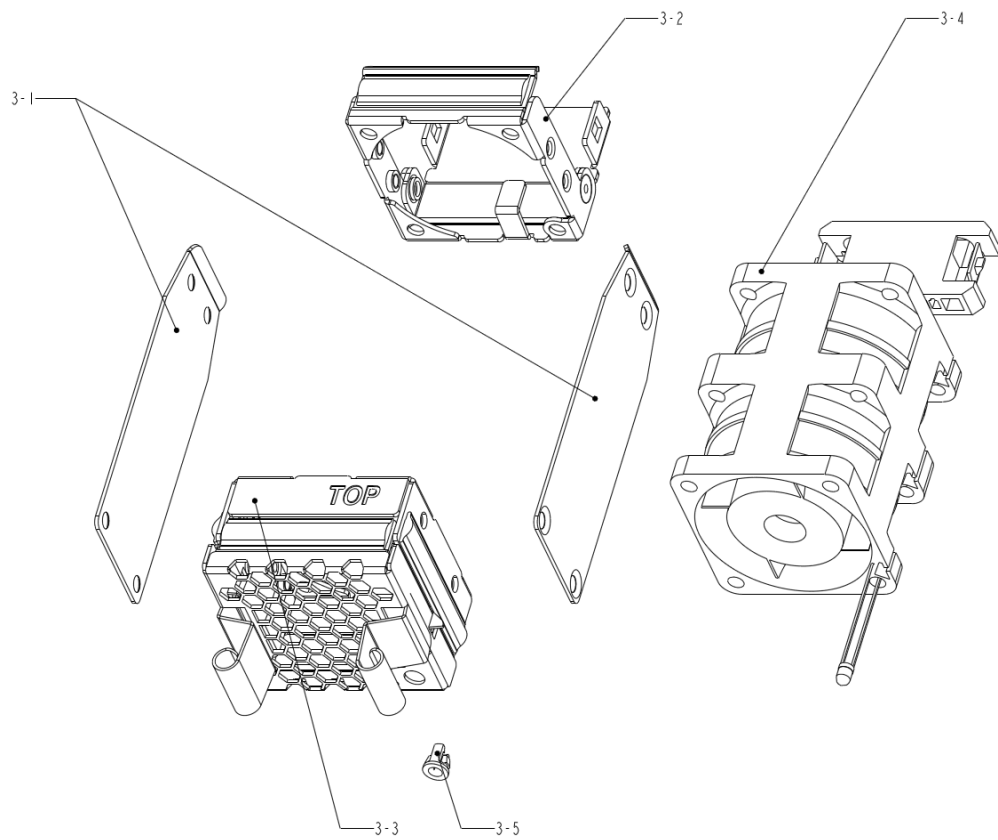


Figure 5 Treatments to fan-assembly